

COMPUTER USERS OF ERIE

CUE Newsletter – October 2022 (Volume 39 Number 10)



October CUE Meeting

The next general meeting is on Thursday October 20th at 7:00 PM, by a Zoom link in your email. Check the CUE website (www.cuerie.com), for more information.



Visit the CUE
Website at:

www.cuerie.com

CUE is a member of APCUG



An International
Association of Technology
& Computer User Groups

CUE Calendar



Calendar events are subject to change. SIG stands for Special Interest Group.
(look for notices outside of the newsletter for delays or special news on meetings)

CUE Membership Meetings (typically 3rd Thursday of each month)

Thursday October 20th at 7 PM

Thursday November 17th at 7 PM

Beginner's User Group (BUG) SIG Meetings

To Be Scheduled Upon Request

Digital Photo SIG Meetings (typically 1st Saturday of each month except June/July/August)

Saturday October 1st at 9:30 AM

Saturday November 5th at 9:30 AM

Genealogy SIG Meetings (typically 1st Tuesday of each month)

Tuesday October 4th at 7 PM

Tuesday November 1st at 7 PM

MAC SIG Meetings (typically 2nd Saturday of each month except June/July/August)

Saturday October 8th at 9:30 AM

Saturday November 12th at 9:30 AM

Smartphone & Tablet SIG Meetings (typically 4th Monday of each month) (RSVP John Fair)

Monday October 24th at 7 PM

Monday November 28th at 7 PM

Windows SIG Meetings (typically 2nd Saturday of each month except June/July/August)

Saturday October 8th at 1 PM

Saturday November 12th at 1 PM

CUE Christmas / Holiday Party

Thursday December 8th at 6 PM

CUE Picnic Picture from Janice Castro's Camera



The CUE Picnic at Presque Isle on 9/15/2022 had a nice time of fellowship, fresh air, and plenty of food, so that nobody needed to walk away hungry! Thanks to everyone who contributed to it!

CUE Picnic Pictures from John Szympruch's Camera



CUE Picnic Pictures from John Szympruch's Camera



CUE Picnic Pictures from John Szympruch's Camera



Virtual Classes – are Real

By Phil Sorrentino at Sun City Center Computer Club (www.scccomputerclub.org)

That almost sounds like an oxymoron like “Jumbo Shrimp” or “deafening silence.”

Well, the coronavirus has elevated teleconferencing to a level never seen before or maybe even ever expected. Almost everyone, by now, knows of Zoom and other computer Apps like GoToMeeting for teleconferencing. Zoom appears to have a lion’s share of the business. If you’re not quite sure what Zoom is, here is what Wikipedia says. “Zoom Video Communications, Inc is an American communications technology company. It provides video telephony and online chat services through a cloud-based peer-to-peer software platform and is used for teleconferencing, telecommuting, distance education, and social relations”. For many of us, we can think of it just as an “easier to use” Skype. Two years ago, I did a presentation to a User Group on the west coast using Zoom (surprisingly not Skype). It was the first time I had heard of or used Zoom. Now Zoom has over 40% of the teleconferencing market. (Boy did I miss an investment opportunity. Zoom went public in March 2019 at \$36 and is now around \$250.)

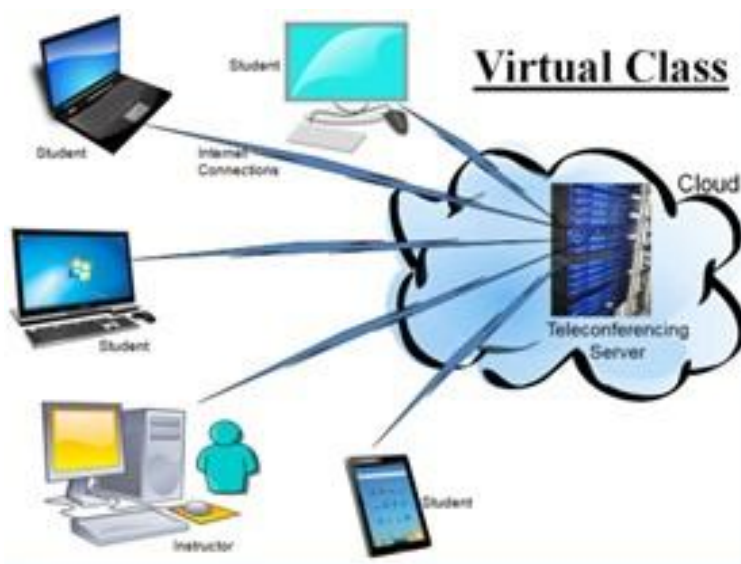
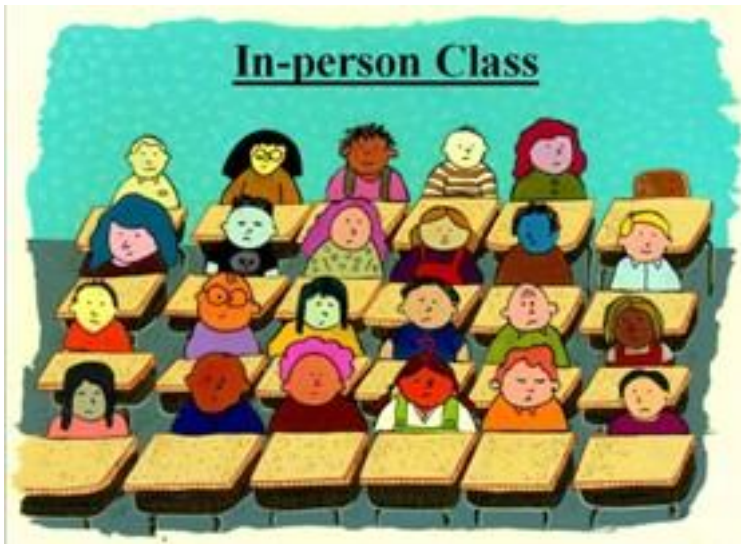
Before the virus, teleconferencing was used mostly in the corporate world. But now everyone is familiar with it, from the seniors who are self-quarantining to avoid crowds, to elementary school students and teachers staying at home to avoid classrooms and crowded schools, to employees who are working from home to avoid the workplace gathering places like the coffee pot, the copier, and the water cooler.

Almost all of us are trying to avoid groups of people where the virus might easily be transferred. I recently needed to go to a shopping mall, and I was amazed to see how empty it was. We are staying away from gathering places. (Although the beaches do still seem to be pretty crowded.) So, now that we are not going out and gathering as much, we are staying home a lot more, which gives us a lot more time to learn new things. How many of us have taken up a new instrument or are learning a new language? Now’s the time to learn how to play that guitar or keyboard you bought a few years ago. Well, language and instruments may be too much to expect but we probably can more easily learn about things we are involved in or are using daily, like our computer and our phone. And that is where virtual classes can be of some help.

Virtual classes are educational classes held remotely using teleconferencing software like Zoom or GoToMeeting, or others. With an in-person class, students and teachers gather in a classroom and interact there. With a Virtual class, we interact through our computer Clients (apps) which are then gathered together in a Server. (Remember Client-Server Technology?) Each of our computers is connected to the server via the internet, and it is the Server software that provides the magic that lets us all share the Video and Audio from our client computer’s cameras and microphones. The popular servers support many different clients. You can attend a virtual class using almost any device such as a Windows computer, an Apple computer or an iPhone or iPod, an Android phone or tablet, a Chromebook, or

Virtual Classes Continued

even a Linux computer. A reliable, fast internet connection will greatly improve the experience. A wired connection to your router may be desirable, but not very common. Fortunately, modern wi-fi is typically more than adequate. (But unfortunately, not everyone has the latest wi-fi, especially if it is being supplied by the Internet Service Provider.)



The internet connections to the server in the cloud allow us to interact “virtually” and avoid gathering together. The server “connects” each of us to each other. And the server presents a classroom

presentation to each of us (the Users) so we can see who is participating in the virtual class. (There are controls on the Users screen that allow the Video and Audio, separately, to be turned on or off. The audio control is the “mute” control, mute turns the audio off, and un-mute turns the audio on. The video control is typically just Video on or off, though initially, it might show up as “join with Video”.)

The classroom presentation also has some different ways of showing the group of participants. Gallery view, as it is sometimes called, shows each of the participants (if their video is on) in a box on the screen. (If a Participant's video is off, the box will just have the User Determined name.) The screen is divided among the number of participants, so as the number of participants gets larger it might be harder to determine who is in attendance, though each participant box does show the name. Another classroom presentation shows predominantly the person who is speaking with others shown in small boxes to the side or bottom, sometimes called “speaker view”. If there are a lot of speakers this might be helpful, though if someone has a slow internet connection, it might end up less helpful, due to the delay.

For any Virtual class, a very comprehensive PowerPoint presentation would be recommended, in general, to guide the class through the subject matter. Some classes readily lend themselves to the Virtual format. These are the “lecture” type of classes where there are no “hands-on exercises” to be undertaken. Demonstrations of hardware or software can mostly be accomplished using a

Virtual Classes Continued

“Share screen” feature that lets the instructor share the contents of his computer screen with all the participants. (Software on a particular device can be easily demonstrated by having that device as another class participant and allowing it to share its screen.) When the instructor does this, the instructor’s screen shows up on every participant's screen.

So, it's just like watching the big screen TV in front of the classroom, only everyone sees the teacher’s screen on their computer screen, at their location. A class like “Cut the Cord” works well as a virtual class because it is mostly lecture. Other classes, that are more interactive, may not lend themselves as easily. A class that requires a lot of interaction may be difficult as a virtual class. This type of class may be more like a discussion group and maybe more dependent on having a

definite agenda and a very strong moderator/instructor. Smaller class sizes may help this type of class be successful. The Special Interest Group on smartphones is an example of this type of class. All the participants of this class are encouraged to bring questions and ideas to the class for discussion, and it is anticipated that everyone will have an opportunity to speak. Questions from the class participants in any class are handled with either a “Chat” feature where the question can go to all participants or a specific participant or a “Raise Hand” feature that shows up on the screens to get the participant’s attention.

Hopefully, this brief description (and time spent watching YouTube videos on the subject) will give you the courage to participate in a virtual class the next time an interesting one is offered.



Genealogy Report for 9/6/22 SIG Meeting

The September 2022 Genealogy SIG met on the 6th via Zoom with 11 attending. Sue opened the meeting at 7:00.

Conrad reminded the group that next week is the CUE picnic. Thirty have signed up so far.

There was a discussion on how to upload trees from Ancestry and how to create GEDCOMS (Genealogical Data Communications).

A short video by genealogy expert Connie Knox was shown on Ancestry's new ethnicity painter. While it is not the same as a chromosome painter, it is a step in the right direction for Ancestry.

DNA continues to be a major asset in solving crimes. Sue told about a friend who was contacted by a cold case police officer who was trying to identify remains that were found in 2011. The police

wanted her friend to do a DNA test. If you want to read the story, the link is:

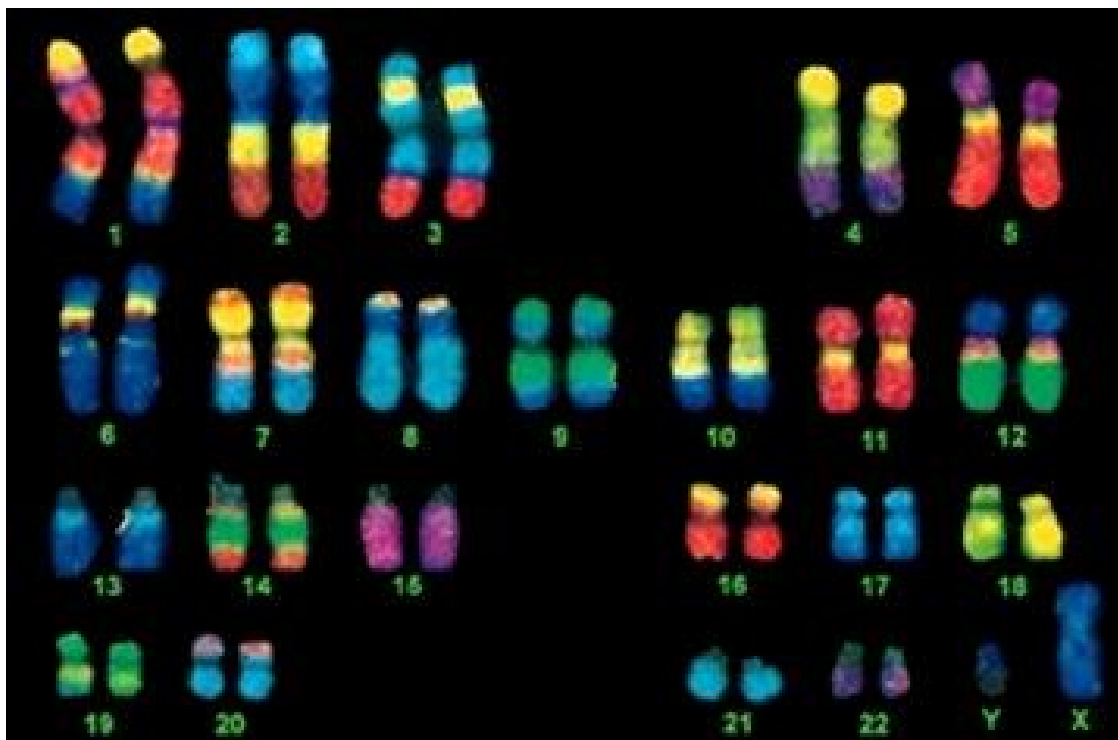
<https://nccpdnews.com/2021/05/21/police-release-reconstruction-of-skull-located-in-2011/>

Several had issues syncing between Ancestry and Family Tree Maker. Those issues were reviewed and Sue had some suggestions.

Carl Z. is going to extend his research to Polish records. Luckily, he knows someone who can help with the translation.

As we go into another year with our Ancestry group subscription, the list of inactive trees will be sent to all. Those that are not claimed will be removed.

Submitted by Connie Edwards



Smartphone & Tablet Report for 9/26/22 SIG Meeting

This session concentrated on iOS 16 which was released on September 12. The latest version is iOS 16.0.2 which contains some bug fixes. Just a reminder that iPadOS 16 will not be released until some time in October. Rather than using videos to show features of the operating system, I decided to show features on my iPhone and give my impressions of the OS. Apple has released a new User Guide for iOS 16 that is a free download from the Books app and YouTube has many videos on iOS 16.

The first thing I noticed was that the row of dots on the Home Screen had been replaced by a button for Spotlight Search. Since I use the dots to scroll between Home Screens, I found I could get rid of the search button by going to Settings/Home Screen/Search and toggling off Show on Home Screen. Spotlight Search can still be accessed by touching the center of the Home Screen and pulling down. The Search Bar in Spotlight Search has been moved to the bottom of the screen from its customary place at the top of the screen. The content resulting from a search has been greatly expanded.

The Battery Status Bar is no longer a graphical depiction of the charge left on the battery, but a placeholder for the Battery Percentage figure. Because of objections to this change, Apple will return to a live graphical depiction and include Battery Percentage in the icon in iOS 16.1.

Photos had a number of useful new features. In the Albums tab scroll to Utilities and you will see that both the Hidden and Recently Deleted items are locked. Face ID or Touch ID unlocks

these folders. Above Hidden is a new folder called Duplicates which shows duplicated photos and conveniently allows you to delete or merge duplicates to save memory. In the People and Places section you can now sort the content in ascending or descending alphabetical order with the double arrow at the top right of the screen. The Copy Edits function allows you to copy the edits made to any photo to photos taken under similar conditions without going through the edit process for each. Access is by the three dot icon at the top of the screen. Go to the similar photo and the three dots shows Paste Edits.

The new “magic” in Photos is the ability to extract images of people, pets or objects from any photo. Tap and hold on the image and then save it. Then you can paste it into Pages, Notes, Mail, or Messages. Any good photo editing program provides a similar capability but the process is laborious and can take from minutes to hours to accomplish what your iPhone can do in seconds.

The Weather app looks like no changes have been made, but tap on any part of the app to show more detailed information. Apple has integrated more of the Dark Sky app that it bought in 2020 into this new version of Weather.

The Customizable Lock Screen is a feature I have come to love. Go to the Lock Screen by waking your phone from a blank screen or pulling down from the top of any Home Screen. Long press on the Lock Screen to enter the Customizable mode. Select the “+” and Apple gives you a variety of options for new wallpaper for

Smartphone & Tablet Report Continued

your lock screen including the ability to select any of your photos. You can then change the font of the clock display and add Widgets either above or below the clock numerals. Note that you can only change fonts and add widgets to Lock Screens created with iOS 16 and not any created in an older OS. When these selections are made, press Add and then select the wallpaper for Home Screens.

We will review these features and cover more in iOS 16 at the next session when more folks have updated to iOS 16. We should also know more about iPadOS 16 by then. The next virtual meeting of the Smartphone and Tablet SIG will be on Monday, October 24.

John Fair



A Note from the Editor

As usual, feel free to contribute information for the CUE newsletter. Whether it is small, large, an article, a tip, information, or pictures, you can send it to me and I will plan to include it in the newsletter. You can reach me at grimcyber@yahoo.com.

Remember that you can find recent news at the CUE website (cuerie.com). At times,

the website will have more recent news than the CUE newsletter since the website is updated continuously and the newsletter is updated monthly.

Stay Safe!

Editorially Speaking, Don Grim

Flame
From
The
CUE
Picnic!



Flame
Looks
Like
A
Hand!

CUE Membership Renewal Season

This note is to remind you that it's time to pay your annual membership dues so you can remain a valued member of Computer Users of Erie. Thank you to everyone who has already paid for the coming year. If you have just joined Computer Users of Erie, Welcome!

As a reminder, immediate family members living in the household of a dues paying CUE member may become an Associate Member by submitting a Membership Application. Associate members pay no dues and are entitled to the benefits of CUE membership, except that they may not vote or become an officer of CUE. Associate members, however, may serve as At-Large Board Members and vote in board meetings in that capacity.

Dues are \$24 per year. Checks for dues can be mailed to:

Computer Users of Erie
PO Box 8941
Erie, Pennsylvania 16505-0941

Whether you are a Member or an Associate, please fill out and include the application form below with your check, so that we can be sure to have your current contact information.

COMPUTER USERS OF ERIE MEMBERSHIP APPLICATION

TODAY'S DATE _____

LAST NAME _____ FIRST NAME _____

ADDRESS _____

CITY, STATE, ZIP _____

HOME PHONE _____ MOBILE _____

EMAIL _____

ANNUAL DUES ARE \$24 AND ARE PAYABLE IN AUGUST.

PLEASE PRINT

**COMPUTER USERS OF ERIE
MEMBERSHIP APPLICATION**

Today's Date _____

Last Name	First Name
Address	
City, State	Zip
Home Phone	Cell Phone
Your Email	

The yearly dues are payable in August of each year. The dues are \$24 annual.

For NEW members only, when you join outside the annual cycle your initial dues are based upon the month you join. Follow the schedule below.

August \$24	September \$22	October \$20	November \$18
December \$16	January \$14	February \$12	March \$10
April \$8	May \$6	June \$4	July \$2

Information provided on this form will be placed into a CUE Membership Directory

What is your Computer or Device: (Circle)

Windows Mac Android iPhone iPad
Tablet Linux Other

What is your level of expertise? (Circle)

Novice I know some I want to learn more
Expert Geek

Send your completed application
to:

Computer Users of Erie

PO BOX 8941

Erie, Pa 16505-0941

What do you wish to gain by joining Computer Users of Erie?

Student membership is just \$15 per year (provide proof of student status)

CUE Officer Information

Officers

President	Conrad Sobczak	cjsob16511@hotmail.com	814-899-9699
Vice President	Paul Francis	pdfflyer@roadrunner.com	814-882-1175
Secretary	Susan Mueller	suepasta@roadrunner.com	814-622-1262
Treasurer	John Fair	johncfair@gmail.com	814-474-3055

At-Large Board

Lawrence Brown	larrybrown0191@icloud.com	814-323-1067
Don Grim	grimcyber@yahoo.com	814-461-8289
Marcia Keller	dekmak43@gmail.com	814-449-4682
Hal Kelley	hal_kelley@outlook.com	814-836-1803
Suzanne Matthews	pdxmatthews@aol.com	814-790-4185

Alternate At-Large Board

Lou Cioccio	lcioccio@mac.com	814-868-1320
-------------	--------------------------------------------------------	--------------

Special Interest Groups

Beginner's (BUG)	Lou Cioccio	lcioccio@mac.com	814-868-1320
Digital Photo	Lou Cioccio	lcioccio@mac.com	814-868-1320
Genealogy	Susan Mueller	suepasta@roadrunner.com	814-622-1262
MAC	Lou Cioccio	lcioccio@mac.com	814-868-1320
Smartphone & Tablet	John Fair	johncfair@gmail.com	814-474-3055
Windows	Lou Cioccio	lcioccio@mac.com	814-868-1320

Other Resources:

CUE Historian	Tom Kuklinski	tkuklinski@gmail.com	814-746-9165
Editor	Don Grim	grimcyber@yahoo.com	814-461-8289
Membership Chair	John Fair	johncfair@gmail.com	814-474-3055
Webmaster	Tom Kuklinski	tkuklinski@gmail.com	814-746-9165

CUE Disclaimer

The Computer Users of Erie (CUE), a nonprofit affiliate of APCUG, is not connected with, nor does it represent the interests of such organizations as IBM, Apple, Texas Instruments, Microsoft, or any other manufacturer or vendor, nor can it assume responsibility for the accuracy or misrepresentation of materials or statements found in advertisements, articles, announcements, or presentations appearing in its newsletter or at CUE sponsored meetings. The members of the CUE Board of Directors, committees, and SIGs are volunteers giving of their time and energy to assist CUE members through education. CUE shall not be held liable in name or performance for the outcome of activities or agreements to provide services offered by any person in the name of CUE. CUE welcomes comments, letters, original articles and programs for its newsletter. Such materials may be submitted to: CUE Editor, P.O. Box 8941, Erie, PA, 16505-0941. Also you can email grimcyber@yahoo.com. Permission is hereby granted to other nonprofit computer user groups to reprint articles appearing herein, unless specifically restricted, provided credit is given to both its author, if known, and its original source.

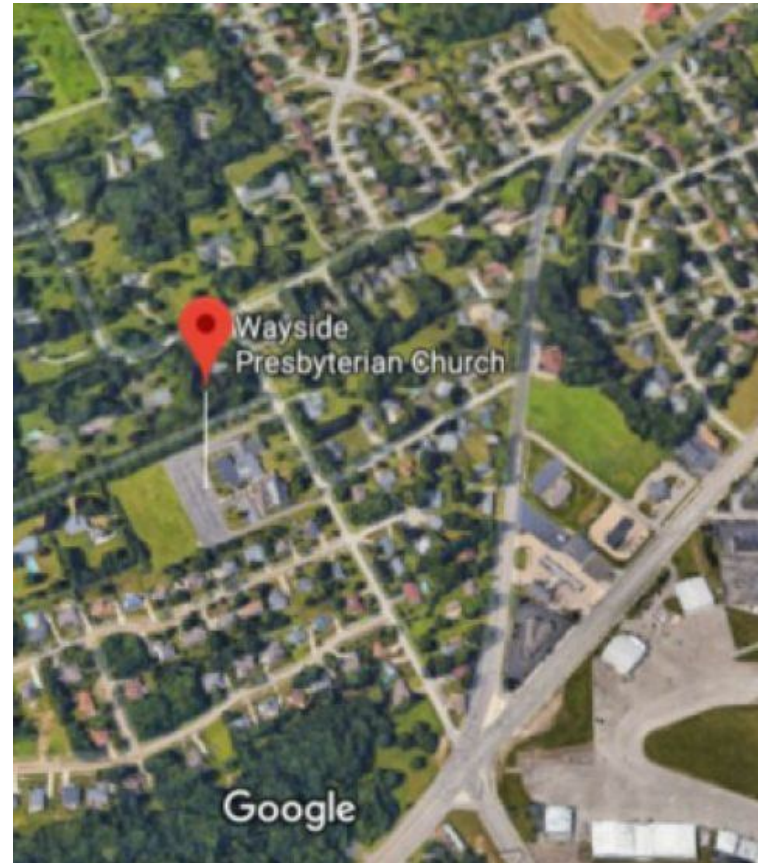
Directions to Wayside Presbyterian Church for CUE Meetings

Wayside Presbyterian Church, at 1208 Asbury Road, is approximately three blocks north of the intersection of Asbury Road and Route 5. This intersection is at the northwest corner of the Erie International Airport property. Following Asbury, turn left at the first marked driveway for the church. During the afternoon winter schedule (10:00 AM for the months of November, January, February and March), entry is through the two sets of blue double doors. Use the buzzer to gain entry if the doors are locked. During the normal evening schedule (7:00 PM the remaining months) use the double doors on the south side of the Christian Education wing. Signs are posted in the building to direct you to the meeting room.

From West of Erie International Airport: Follow Route 5 to the intersection of Asbury and Route 5. Turn hard left onto Asbury Road. Look for the church on the left approximately 3 blocks north of the intersection.

From South of Erie: Take Interstate 79 north to the 26th Street (Route 20) Exit. Bear left onto 26th Street (Route 20) west. Follow Route 20 about 3.4 miles west to Asbury Road. Turn right (at the Sheetz Gas Station) onto Asbury and follow it straight across Route 5. Look for the church on the left approximately 3 blocks north of the intersection.

From East of Erie International Airport: Follow 26th Street (Route 20) west to Asbury Road. Turn right onto Asbury and follow it straight across Route 5. Look for the church on the left approximately 3 blocks north of the intersection. OR, follow 12th Street (Route 5) west past the airport to Asbury Road. Turn right onto Asbury Road. Look for the church on the left approximately 3 blocks north of the intersection.



About the Newsletter

The CUE Newsletter is published monthly by the Computer Users of Erie (CUE), an independent nonprofit computer user group, dedicated to the education and support of our members. The opinions expressed herein are those of the individual authors or the editor, and do not necessarily reflect the opinions of CUE. This publication is Copyright © 2018 by the Computer Users of Erie. All rights reserved. Permission to reprint is hereby granted to any Nonprofit Organization, as long as proper credit is given, or not restricted by the original author or source. **Advertising:** Advertising is welcome from both our members and commercial sources. For current advertising rates, please send an email to the Editor requesting a copy of the Ad Rates file. **Address Changes:** Any recipient of the newsletter is urged to submit a change of address notification to the Editor, either via US Mail to the address shown below, or (preferably) via email, so we may keep our records accurate. **Newsletter Exchange:** CUE welcomes newsletters from other user groups. If you would like to exchange newsletters, either by US Mail or via electronic (Internet) delivery, please send your newsletter to the address listed below. We will add your name to our mailing list and send you our newsletter in return. **Submissions:** Submissions are always welcome from our members or outside sources. Submissions may be articles, images, cartoons, etc. For first time authors, please request a copy of our Submissions Guidelines from the Editor, prior to submitting any items. This will help to eliminate publication delays. Submissions are due by the 5th of each month. **Correspondence:** General correspondence to CUE may be sent via US Mail to: Computer Users of Erie, PO Box 8941, Erie, PA 16505-0941 USA. Email to: cuerie@gmail.com. Editor Email to: grimcyber@yahoo.com.

CUE Membership Benefits



As the largest computer users group in northwest Pennsylvania, CUE has served Erie and surrounding communities since 1982. CUE provides a forum for people to learn about computers and have fun doing so. The group meets the third Thursday each month, with the exception of the months of July and December. In July the group gathers for a picnic and December is the annual holiday party (dates vary). CUE meetings are at Wayside Presbyterian Church, 1205 Asbury Road, Erie. Meetings from April through October are at 7:00 p.m. From November through March, the meetings are at 10:00 AM in the morning, except it will stay at 7:00 p.m. during the Caronavirus Pandemic.

Our monthly meetings are open to the public regardless of age or ability. Many of our members are senior citizens who span a wide range of capabilities and interests but share a desire to know more about how to use computer related technology. Our role is to provide a forum for continuous learning from each other. CUE has a closed Google gmail group that is used to communicate with members and to post questions/problems to seek answers from the membership. Members pay an annual membership fee of \$24 to receive a membership directory, monthly newsletter, availability to monthly general meetings, and any of the Special Interest Group (SIGs) meetings, usually held in a member's home. Locations and times vary, so check the online EVENTS Calendar on the website for the latest information. SIG topics include:

- Digital photography [and photo safari]
- Genealogy
- Macintosh computers
- Computer troubleshooting
- Beginners users group (BUG)
- Handheld smartphones and tablets

CUE is a member of the Association of Personal Computer User Groups (APCUG). APCUG is an International, platform-independent, volunteer-run, non-profit organization devoted to helping member User Groups offer enhanced services to their members. Some of the membership benefits include:

- Speakers bureau
- Free virtual technology conferences
- Regional conference
- Push newsletter articles
- Discounts and special offers from vendors
- User group newsletters online

Find us online at <http://www.cuerie.com/>. And Facebook @cuerie

Computer Users of Erie
PO Box 8941
Erie, PA 16505-0941

Postmaster:
Address Service Requested



Address label here