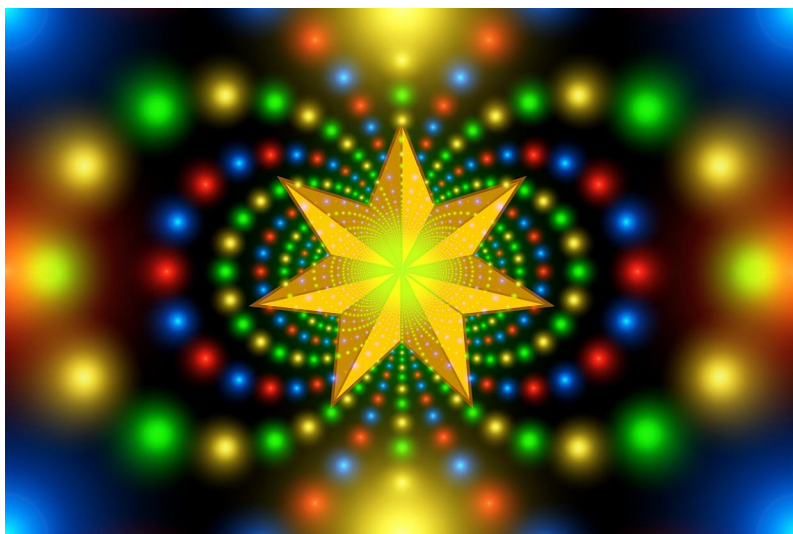


# COMPUTER USERS OF ERIE

CELEBRATING 37 YEARS SERVING NW PENNSYLVANIA First Programed in 1982

## CUE Newsletter - December 2019 (Volume 36 Number 12)



### Christmas Party

On December 5<sup>th</sup> at 6:00 PM, the CUE Christmas / Holiday Party was held at The Elks Club. Food, gathering, and small gifts were celebrated in honor of the merry season! More about the CUE January meeting will be at the CUE website and the next issue of the CUE newsletter.



Visit the CUE  
Website at:

[www.cuerie.com](http://www.cuerie.com)

CUE is a member of APCUG



An International  
Association of Technology  
& Computer User Groups

# CUE Calendar



Calendar events are subject to change. SIG stands for Special Interest Group.

## CUE Christmas/Holiday Party

Thursday December 5<sup>th</sup> at 6 PM

## CUE Membership Meetings (typically 3<sup>rd</sup> Thursday of each month)

**NO** CUE Membership Meeting for December (other than Christmas Party)

Thursday January 16<sup>th</sup> at 10 AM

## Beginner's User Group (BUG) SIG Meetings

To Be Scheduled Upon Request

## Digital Photo SIG Meetings (typically 1<sup>st</sup> Saturday of each month except June/July/August)

Saturday December 7<sup>th</sup> at 9:30 AM

Saturday January 4<sup>th</sup> at 9:30 AM

## Genealogy SIG Meetings (typically 1<sup>st</sup> Tuesday of each month)

Tuesday December 3<sup>rd</sup> at 7 PM

Tuesday January 7<sup>th</sup> at 7 PM

## MAC SIG Meetings (typically 2<sup>nd</sup> Saturday of each month except June/July/August)

Saturday December 14<sup>th</sup> at 9:30 AM

Saturday January 11<sup>th</sup> at 9:30 AM

## Smartphone & Tablet SIG Meetings (typically 4<sup>th</sup> Monday of each month) (RSVP John Fair)

**NO** Smartphone & Tablet SIG Meeting for December

Monday January 27<sup>th</sup> at 7 PM

## Windows SIG Meetings (typically 2<sup>nd</sup> Saturday of each month except June/July/August)

Saturday December 14<sup>th</sup> at 1 PM

Saturday January 11<sup>th</sup> at 1 PM



## John Szympruch Awarded 3<sup>rd</sup> Place in Photo Contest!

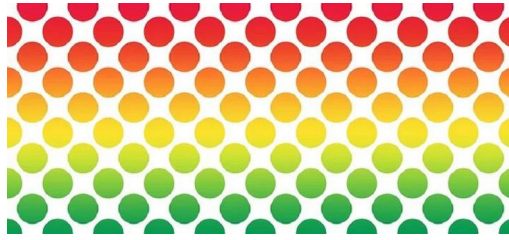
John Szympruch, a member of Computer Users of Erie (CUE), had a photo picked for 3<sup>rd</sup> Place by An International Association of Technology and Computer User Groups (APCUG), in the People category. The photo is titled "Old Time Fiddler" which shows Louis Nicola, a talented local musician who has performed with many groups including the Erie Philharmonic. The photo is shown below:



You can find all the photo contest winners, as well as winners for eBulletins, Newsletters, and websites on the web at:

<https://apcug2.org/wp-content/uploads/2019/07/2019-APCUG-Contest-Winners-Bill-James.pdf>

# 'Twas the Night Before Implementation



'Twas the Night Before Implementation, and all through the house  
not a program was working, not even a browse.

The programmers hung by their tubes in despair,  
with hopes that a miracle soon would be there.

The users were nestled all snug in their beds,  
while visions of enhancements danced in their heads.

When out of the elevator arose such a clatter,  
I sprang from my desk to see what was the matter.

And what to my wandering eyes should appear  
but a super programmer (with a six pack of beer).

His resume glowed with experience so rare,  
he turned out great code with a bit pushers flair.

More rapid than engines, his programs they came,  
and he whistled and shouted and called them by name:

"On Update! On Add! On Inquiry! On Delete!  
On Batch Job! On Closing! On Functions Complete!"

His eyes were glazed over, fingers nimble and lean,  
from weekends and nights spent in front of a screen.

A wink of his eye and a twist of his head  
soon gave me to know that I had nothing to dread.

He spoke not a word, but went straight to his work,  
turning specs into code, then turned with a jerk,

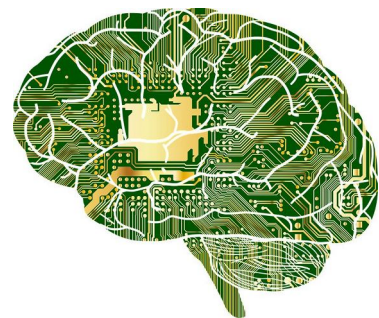
and laying his finger upon the "enter" key,  
the system came up and worked perfectly.

The updates updated, the deletes they deleted,  
the inquires inquired and the closings completed.

He tested each program and tested each call,  
with nary an UAE, all had gone well.

The system was finished, the tests were concluded,  
the users last changes were even included.

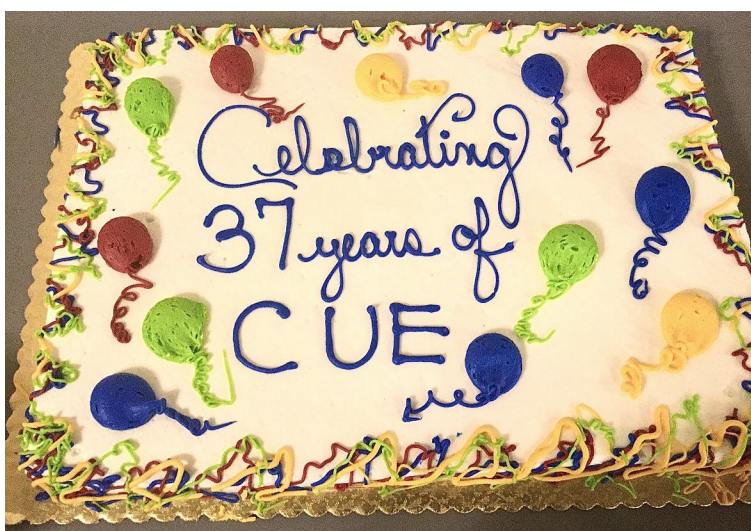
And the user exclaimed with a snarl and a taunt,  
"Its just what I asked for, BUT ITS NOT WHAT I WANT!"



Author Unknown



## CUE Christmas/Holiday Pictures from John Szympruch:



## CUE Christmas/Holiday Pictures from John Fair:





## CUE Christmas/Holiday Pictures from John Fair:





## CUE Christmas/Holiday Pictures from John Fair:





## CUE Christmas/Holiday Pictures from John Fair:



## CUE Christmas/Holiday Pictures from Janice Castro:



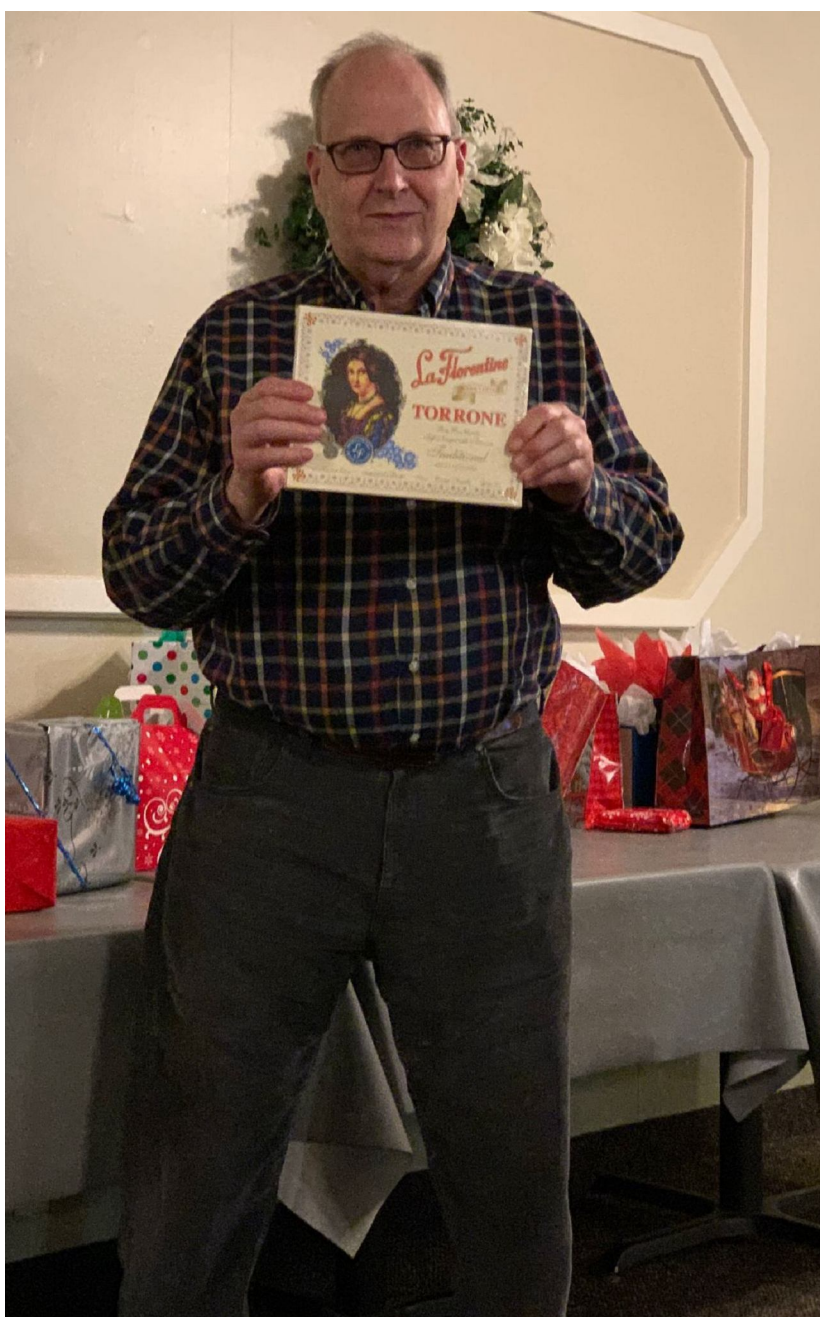


## CUE Christmas/Holiday Pictures from Janice Castro:



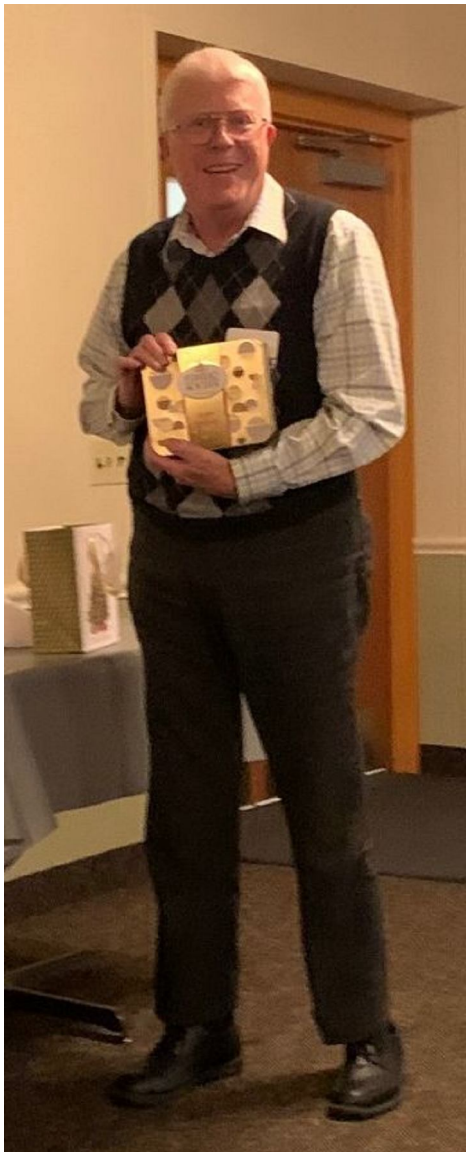


## CUE Christmas/Holiday Pictures from Janice Castro:





## CUE Christmas/Holiday Pictures from Janice Castro:





## CUE Christmas/Holiday Pictures from Janice Castro:

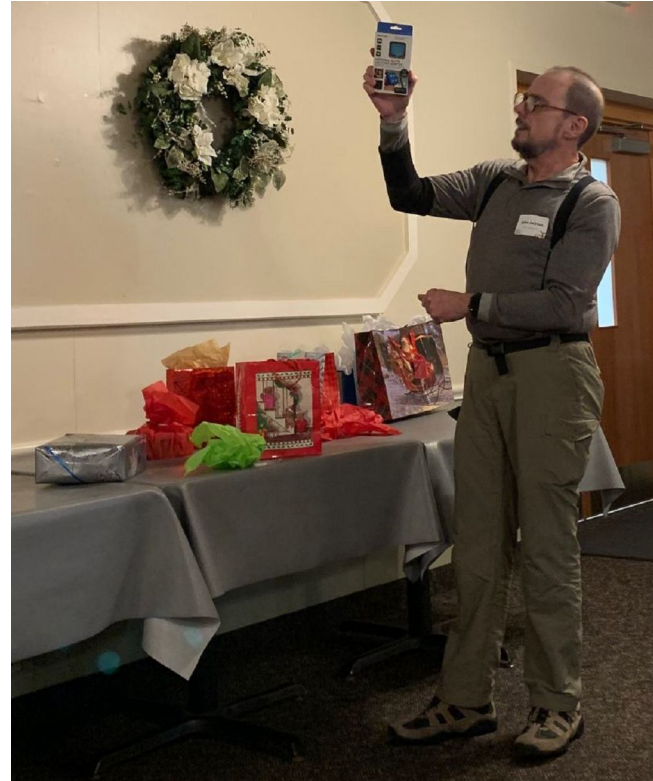
Safety Page!



Safety is Thinking Before Acting!



## CUE Christmas/Holiday Pictures from Janice Castro:



Thanks to everyone involved in making for an enjoyable CUE Christmas/Holiday Party!  
Including the Planners, Preparers, Attenders, Eaters, Openers, and Celebrators!



# Genealogy Report for 11/5/19 SIG Meeting

The Genealogy SIG met at 7:00 p.m. at the home of Hal and Gretchen Kelley.

Those attending were: Don Rhodes, Susan Mueller, Hal Kelley, Tim Donlin, Bill Klauk, Joanne Haulik, Carole Blakeslee, Connie Edwards, Liz Wisniewski, Carl Zalewski, Lucia Doyle, Shannon Zuck, Pat Mickel, Conrad Sobzcak, Susan Wilber and Carl Hull.

There was a report from the committee that has been working on where the next SIG venue will be for our regular monthly Genealogy SIG meetings, beginning with the March 3, 2020 meeting. Good work has been done on this. We will be meeting at the Erie County Library – Millcreek Branch, at 2088 Interchange Road, Suite 280 (at Millcreek Pavilion), Erie, 16565. Phone: 814-451-7084.

The meeting time will be 5:30-7:30 p.m. Thank you to Janice Castro, Sue Mueller and Shannon Zuck who put this plan together. Parking will be good, the meeting room is a good size, the TV monitor is large and this location is very accessible to our SIG members, and may even be an attractive location for new folks interested in family history/genealogy. Our Genealogy SIG has grown in numbers and areas of expertise. We would like to share with those who have never been part of such an endeavor.

Hal Kelley displayed a large vertical pedigree chart of his family. The point was to share with the SIG members that there are resources in our community that can assist those wanting to produce a chart that does not have page breaks which require pasting/taping, so that you can

produce a professional looking chart about any length you need, along with professional printing. Hal went to the Blasco Library Idea Lab with his chart on five separate pages. Jude, the young man who gave a program on 3D printing to a CUE meeting last year, showed Hal how to turn the five separate pages of a chart into one, using Photoshop. They then printed the chart on the large printer in the Idea Lab. Great result! You can print things up to 36" x 72."

Pat Mickel told us of a friend showing her about DNA Paint, which allows one to make beautiful genealogy fan charts. It is not an ancestry program. It has to do with DNA matching, and is a great resource for people who are visual. It would be interesting to hear more about this.

Don Rhodes had a question about how to deal with a very old book he wanted to show us, but it is in bad condition, and he was reluctant to bring it to the meeting. He is interested in how to work with it to get it in better shape. One response was to take a precious book like his to a conservator who specializes in restoration work on such items. Another idea is to ask someone at Blasco Library if they know of specialists in this area. The book has important notes in it, so he would like to have it rebound. University librarians might also know of people in the conservator business. A few SIG members with family pictures in bubbles also have an interest in this topic.

Lucia Doyle showed a family history book done by a third cousin in California, who shares a second great-grandfather with



## Genealogy SIG Report Continued

Lucia. It has a picture of one of the family members who emigrated from Sweden to the United States from Sweden. One of the family members decided at some point to hire a genealogist to determine if there is royalty in the family. Apparently there is, and Lucia mentioned that in her background there are a number of kings and queens. The material Lucia has goes back to the year 800 CE. The book is a real treasure. Lucia's DNA says that she is 50% Swedish. The members of our SIG were very impressed and suggested that Lucia should be given a royal title. Lucia said that her daughter is showing an interest in carrying on her genealogy work.

Paul Francis commented that he is beginning to work on Ancestry ThruLines to further his research. What is ThruLines? ThruLines shows identified descendants of a given ancestor who have tested with AncestryDNA, and share DNA with the tester whose results are being reviewed. The ancestral path between the common ancestor and each DNA match is provided, along with predicted relationship and amount of DNA shared. Sue Mueller said she can assist Paul in taking the right steps to help Paul with this work.

Susan Wilber showed us a book written by her daughter on the Bly Family. It was published just this month. Here is Sue's connection with the Bly family: "Rouse Blyson Lysander - daughter Adelle - daughter Beatrice - son Stanley - daughter Susan (me!). So I guess Rouse was my 3rd great grandfather."

Tim Donlin shared with us his most recent work on [Ancestry.com](https://www.ancestry.com). He is trying to answer the question: Since he has been

contacted by two DNA "cousins", one of whom is in Dubois, Pa and the other one is in Ireland, Tim isn't sure if his great grandfather is tied to their trees, but they are DNA related.

There was a question about what "Fold3" is. Ancestry owns it. A description on the internet says: Fold3 provides convenient access to military records, including the stories, photos, and personal documents of the men and women who served. On Fold3, you can combine records found on the site with what you have in your own albums and shoeboxes to create an online memorial for someone who served.

Don Rhodes told a story that is interesting in terms of genealogy. Stories are important to us. Don related how one Sunday when he and his wife pulled up to their church, there was a woman standing at the bottom of the stairs. Don said to her, "Can I help you?" She said "No, I'm waiting for my friend." Don said okay, he would see her later. So, Don and his wife went into the church, and at the place in the service where the people "Pass the Peace," he said to the woman, "You know, every time I see your face, I think of a Morgan." The woman said to Don, "I am a Morgan." Don related that "she is a third cousin who I have never seen until that day, and she lives just a block from where we used to live, and she has lived there most of her life." Don said, "I knew her Dad, and I knew two of her siblings. But now I know her, and we have a very nice relationship, and she means very much to me." What a great serendipity for Don!

Sue said that this summer she met a second cousin three times removed, who



## Genealogy SIG Report Continued

came from Connecticut. Sue had had contact with her sister-in-law who lived in Montana, and that woman gave Sue some information about the cousin from Connecticut. She was coming to Pennsylvania. She and Sue decided to meet at the Library. But there was a sign on the door that said "Closed for Staff Training." So they went to a nice place for lunch. They had a great opportunity to visit and talk. Another Serendipity.

Carl Zalewski asked if you can put pictures on Family Tree Maker. The answer is "Yes." One can also include videos, voice recordings and stories in a Word document (and perhaps other formats) as "Media" on each person's "page."

There was a question about various formats for audio recording. A tip was given that "Audacity" is the program to use for recording, editing and exporting audio recordings. Those interested can simply enter "Audacity" on their browser and learn about it.

The next meeting will be held on December 3rd at 7:00 p.m. at the home of Sue Mueller.

The meeting was adjourned at 9:00 p.m.

Respectively submitted,

Harold D, Kelley

## Smartphone & Tablet Report for 11/25/19 SIG Meeting

This Special Interest Group meets at 7:00 PM on the fourth Monday of the month at my home.

To begin the meeting we read Joanne Kleinhantz's question about iPhone models and phone features folks like. That kicked off a lively discussion about how everyone uses their phones, the apps they most liked, differences between models of phones and even the best ways to save money on cellular service. iPhone Camera and Photos topped the list of favorite apps, followed by Safari, Mail, Calendar, etc. Suzanne Matthews has had good experience with Spectrum Mobile which uses the Verizon network. She pays for 1 Gigabyte a month, and doesn't go over that amount of monthly data.

Many of us chose our preferred iPhone model by matching the type of photos we take and the camera offered in a particular model. Apple's website offers a tab for comparing several iPhones as to size, weight, camera, display type, etc. and that is a great guide to choosing a phone.

We continued our look into the features of iOS 13 by looking at Photos. That app is meant to work with iCloud Photos storage; you will not get full functionality if you have not enabled iCloud Photos. I really like the way the Photos tab organizes and curates your photos. Years, Months and Days present tiled views that show your best photos as larger than the rest and screens out receipts, duplicates and screenshots. In the Years view, each month scrolls by and if you tap on a previous year to access the Month view, you are automatically



## Smartphone & Tablet SIG Report Continued

taken to photos taken around the same time of year. Months categorizes photos by event. All Photos includes everything in your photo library and by pinch and zoom you can quickly view your collection over time.

The editing tools in Photos are improved and expanded. You can auto adjust the attributes of the photo or adjust each of 15 attributes separately. Since the meaning of each of these attributes can be confusing, I handed out a list of definitions. A variety of filters provides special effects from a variety of color filters to black and white and you can crop, straighten and rotate the photo. We demonstrated use of the editing tools using a portrait photo of my then 97 year old aunt. Apple also provided many of the same editing tools for videos, but we did not demonstrate this capability.

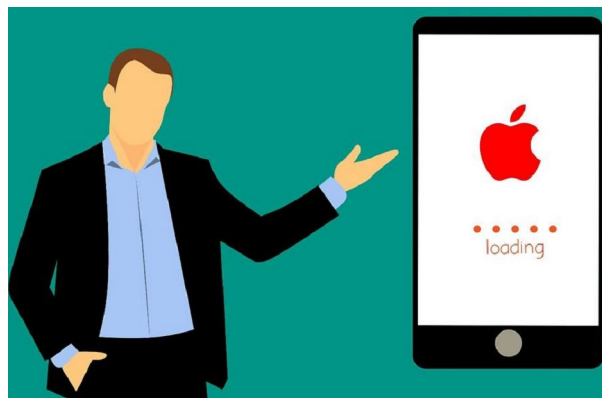
Apple does not provide easy access to photo metadata (location, time, camera, exposure, etc.) but they provide a rather convoluted way to access this information. In a previous session, I had suggested using the Investigator app to easily access metadata. I mentioned you could use the new Share Sheet for any selected photo to access this app by scrolling toward the bottom of the text list.

Who hasn't used their smartphone for driving directions? Maps has added more detail for roads, buildings, parks etc. in iOS 13. Apple has also caught up with the competition by adding junction view and verbal directions using landmarks instead of just distance to a turn. They also added a feature like Google Maps' Street View which they call Look Around that is a smoother, high resolution version using Apple's own photographic data. This feature is currently only available for a limited number of major cities, but will be rolled out for most of the country over the next year. A convenient feature called Collections allows users to keep track of places you want to visit, restaurants you want to try, etc.

Reminders got some attention but only a few members use the app, and I am not one of them, so we did not go into much detail about it.

There is no meeting of this SIG in December since our customary meeting date is too close to Christmas. The next regularly scheduled meeting will be on Monday, January 27, 2020, weather permitting. Happy New Year everyone!

John Fair





## Secretary's Report for 11/21/19 CUE Meeting

Members Present: Paul Francis, John Fair, Sue Mueller, Hal Kelley, Niels Pedersen, Santa Merrifield, Nancy Group, Edward Group, Tim Donlin, Jeanne Brickell, Conrad Sobczak, Don Grim, Hadley Jones, Janice Castro, Joanne Kleinhanz, Bob Jaworski, Marcia Keller, Carol Korn, Allison McKinstry, John Jackson, Linda Waha, Lou Cioccio, Liz Wisniewski, Tom Kuklinski (logged in), Bill Klauk (logged in)

Guests Present: "none"

The number of members present (25) exceeded 14, the number needed for a quorum (20% of 73 total members).

The CUE meeting was started by president Paul Francis at about 10 AM. Paul asked if there were any guests or visitors and there were none.

The minutes for the October meeting were mentioned to be in the newsletter. The minutes were accepted by the members for approval (first and second motions from Hal Kelley and Sue Mueller).

Treasurer Janice Castro mentioned that the current treasury balance was \$4,602.19 and would soon be at about \$4,800 with recent deposits coming in. There were recent expenses of \$40 for the meeting room, \$100 for an ad, and \$300 for renewal of the website.

Janice mentioned that the membership is up with 8 new recent members and 73 total paid members. She also mentioned that there are 39 signed up for the CUE Christmas/Holiday dinner. There is a little time past the regular deadline to include

more to join the party and dinner, so there may be even more attending the dinner.

Hal Kelley reported on the Genealogy Special Interest Group. The group will meet at Sue Mueller's home in December and at Hal's home in January and February. Starting in March, the group will meet at the Millcreek branch of the Erie Library. The meeting time of 7 PM will change to 5:30 PM to 7:30 PM when the group meets at the library. The average attendance for meetings has been about 14 to 20 people. The group is looking for a new host to takeover for Hal. The host will basically be responsible for providing a summary of each meeting for the CUE newsletter.

Lou Cioccio reported on the Digital Photo Special Interest group. The November group meeting was canceled due to late RSVP's. Another meeting is scheduled in December.

Lou Cioccio reported on the Macintosh Special Interest Group and Windows Special Interest Group. The November meetings were canceled for both groups due to a 90th birthday celebration on the same date. Another meeting for each group is scheduled in December.

John Fair reported on the Smartphone & Tablet Special Interest Group. Their last meeting had discussion on the latest iOS 13 operating system. They also talked about alternate browsers and iOS 13 improvement for the Safari browser. They plan to discuss more on the iOS 13 operating system in their November meeting.



## Secretary's Report Continued

Paul asked for any new business and nothing was brought up about that.

There was a request to adjourn the meeting. The members approved the adjournment of the meeting (first and second motions from Tim Donlin and Sue Mueller).

A demo followed the meeting from Tom Kuklinski who logged in to a video conference with CUE, using Zoom, showing and explaining the many features of the new CUE website.

Respectfully Submitted,  
Don Grim, Secretary

## A Note from the Editor

As usual, feel free to contribute information for the CUE newsletter. Whether it is small, large, an article, a tip, information, or pictures, you can send it to me and I will plan to include it in the newsletter. You can reach me at [grimcyber@yahoo.com](mailto:grimcyber@yahoo.com).

Remember that you can find recent news at the CUE website ([cuerie.com](http://cuerie.com)). At times, the website will have more recent news

than the CUE newsletter since the website is updated continuously and the newsletter is updated monthly.

Try not to go too fast with busy plans during the Holiday season. It is better to slow down and be safe in whatever you do! See you in the new year!

Editorially Speaking, Don Grim





PLEASE PRINT

**COMPUTER USERS OF ERIE  
MEMBERSHIP APPLICATION**

Today's Date \_\_\_\_\_

<b>Last Name</b>	<b>First Name</b>
<b>Address</b>	
<b>City, State</b>	<b>Zip</b>
<b>Home Phone</b>	<b>Cell Phone</b>
<b>Your Email</b>	

The yearly dues are payable in August of each year. The dues are \$24 annual.

For NEW members only, when you join outside the annual cycle your initial dues are based upon the month you join. Follow the schedule below.

August \$24	September \$22	October \$20	November \$18
December \$16	January \$14	February \$12	March \$10
April \$8	May \$6	June \$4	July \$2

Information provided on this form will be placed into a CUE Membership Directory

What is your Computer or Device: (Circle)

Windows Mac Android iPhone iPad  
Tablet Linux Other

What is your level of expertise? (Circle)

Novice I know some I want to learn more  
Expert Geek

Send your completed application  
to:

Computer Users of Erie

PO BOX 8941

Erie, Pa 16505-0941

What do you wish to gain by joining Computer Users of Erie?

Student membership is just \$15 per year (provide proof of student status)



# CUE Officer Information

## Officers

President	Paul Francis	<a href="mailto:pdfflyer@roadrunner.com">pdfflyer@roadrunner.com</a>	814-882-1175
Vice President	John Fair	<a href="mailto:johncfair@gmail.com">johncfair@gmail.com</a>	814-474-3055
Secretary	Don Grim	<a href="mailto:grimcyber@yahoo.com">grimcyber@yahoo.com</a>	814-461-8289
Treasurer	Janice Castro	<a href="mailto:jcastrocue@outlook.com">jcastrocue@outlook.com</a>	312-543-9128

## At-Large Board

Lou Cioccio	<a href="mailto:lcioccio@mac.com">lcioccio@mac.com</a>	814-868-1320
Suzanne Matthews	<a href="mailto:pdxmatthews@aol.com">pdxmatthews@aol.com</a>	814-790-4185
Susan Mueller	<a href="mailto:suepasta@roadrunner.com">suepasta@roadrunner.com</a>	814-622-1262
Don Rhodes	<a href="mailto:jlrdcr@gmail.com">jlrdcr@gmail.com</a>	814-456-2166
Conrad Sobczak	<a href="mailto:hatsob@verizon.net">hatsob@verizon.net</a>	814-899-9699

## Alternate At-Large Board

Marsha Keller	<a href="mailto:dekma43@gmail.com">dekma43@gmail.com</a>	814-449-4682
Hal Kelley	<a href="mailto:hal_kelley@outlook.com">hal_kelley@outlook.com</a>	814-836-1803
Allison McKinstry	<a href="mailto:alli25@yahoo.com">alli25@yahoo.com</a>	814-602-4863

## Special Interest Groups

Beginner's (BUG)	Lou Cioccio	<a href="mailto:lcioccio@mac.com">lcioccio@mac.com</a>	814-868-1320
Digital Photo	Lou Cioccio	<a href="mailto:lcioccio@mac.com">lcioccio@mac.com</a>	814-868-1320
Genealogy	Hal Kelley	<a href="mailto:hal_kelley@outlook.com">hal_kelley@outlook.com</a>	814-836-1803
MAC	Lou Cioccio	<a href="mailto:lcioccio@mac.com">lcioccio@mac.com</a>	814-868-1320
Smartphone & Tablet	John Fair	<a href="mailto:johncfair@gmail.com">johncfair@gmail.com</a>	814-474-3055
Windows	Lou Cioccio	<a href="mailto:lcioccio@mac.com">lcioccio@mac.com</a>	814-868-1320

## Other Resources:

CUE Historian	Tom Kuklinski	<a href="mailto:tkuklinski@gmail.com">tkuklinski@gmail.com</a>	814-746-9165
DOS Information	Don Grim	<a href="mailto:grimcyber@yahoo.com">grimcyber@yahoo.com</a>	814-461-8289
Editor	Don Grim	<a href="mailto:grimcyber@yahoo.com">grimcyber@yahoo.com</a>	814-461-8289
Librarian	Tanya Mattson	<a href="mailto:449tln@gmail.com">449tln@gmail.com</a>	814-833-1404
Membership Chair	John Fair	<a href="mailto:johncfair@gmail.com">johncfair@gmail.com</a>	814-474-3055
Webmaster	Tom Kuklinski	<a href="mailto:tkuklinski@gmail.com">tkuklinski@gmail.com</a>	814-746-9165

## CUE Disclaimer

The Computer Users of Erie (CUE), a nonprofit affiliate of APCUG, is not connected with, nor does it represent the interests of such organizations as IBM, Apple, Texas Instruments, Microsoft, or any other manufacturer or vendor, nor can it assume responsibility for the accuracy or misrepresentation of materials or statements found in advertisements, articles, announcements, or presentations appearing in its newsletter or at CUE sponsored meetings. The members of the CUE Board of Directors, committees, and SIGs are volunteers giving of their time and energy to assist CUE members through education. CUE shall not be held liable in name or performance for the outcome of activities or agreements to provide services offered by any person in the name of CUE. CUE welcomes comments, letters, original articles and programs for its newsletter. Such materials may be submitted to: CUE Editor, P.O. Box 8941, Erie, PA, 16505-0941. Also you can email [grimcyber@yahoo.com](mailto:grimcyber@yahoo.com). Permission is hereby granted to other nonprofit computer user groups to reprint articles appearing herein, unless specifically restricted, provided credit is given to both its author, if known, and its original source.



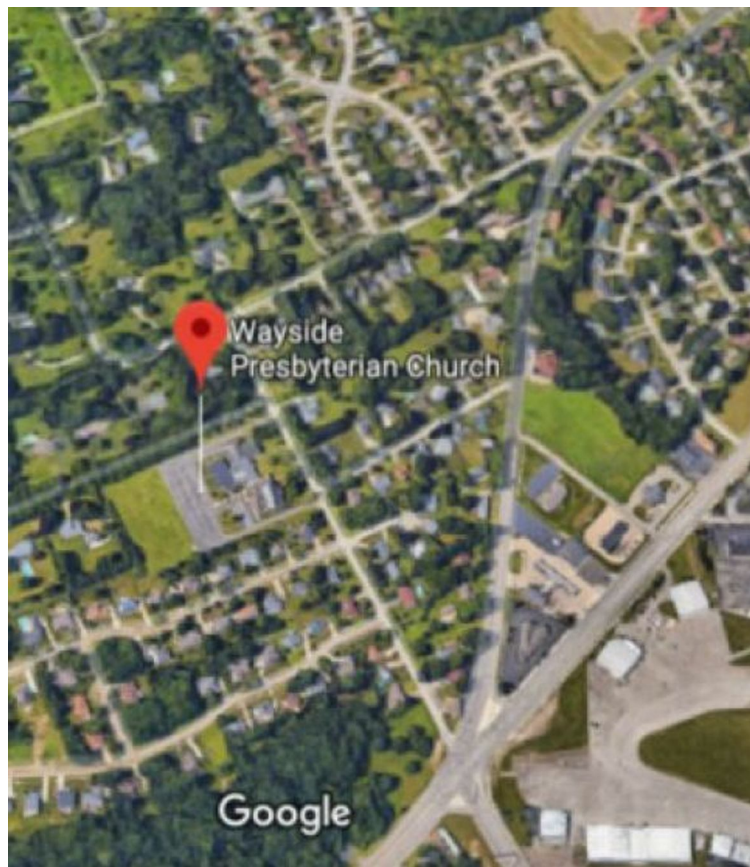
# Directions to Wayside Presbyterian Church for CUE Meetings

Wayside Presbyterian Church, at 1208 Asbury Road, is approximately three blocks north of the intersection of Asbury Road and Route 5. This intersection is at the northwest corner of the Erie International Airport property. Following Asbury, turn left at the first marked driveway for the church. During the afternoon winter schedule (10:00 AM for the months of November, January, February and March), entry is through the two sets of blue double doors. Use the buzzer to gain entry if the doors are locked. During the normal evening schedule (7:00 PM the remaining months) use the double doors on the south side of the Christian Education wing. Signs are posted in the building to direct you to the meeting room.

**From West of Erie International Airport:** Follow Route 5 to the intersection of Asbury and Route 5. Turn hard left onto Asbury Road. Look for the church on the left approximately 3 blocks north of the intersection.

**From South of Erie:** Take Interstate 79 north to the 26th Street (Route 20) Exit. Bear left onto 26th Street (Route 20) west. Follow Route 20 about 3.4 miles west to Asbury Road. Turn right (at the Sheetz Gas Station) onto Asbury and follow it straight across Route 5. Look for the church on the left approximately 3 blocks north of the intersection.

**From East of Erie International Airport:** Follow 26th Street (Route 20) west to Asbury Road. Turn right onto Asbury and follow it straight across Route 5. Look for the church on the left approximately 3 blocks north of the intersection. OR, follow 12th Street (Route 5) west past the airport to Asbury Road. Turn right onto Asbury Road. Look for the church on the left approximately 3 blocks north of the intersection.



## About the Newsletter

The CUE Newsletter is published monthly by the Computer Users of Erie (CUE), an independent nonprofit computer user group, dedicated to the education and support of our members. The opinions expressed herein are those of the individual authors or the editor, and do not necessarily reflect the opinions of CUE. This publication is Copyright © 2018 by the Computer Users of Erie. All rights reserved. Permission to reprint is hereby granted to any Nonprofit Organization, as long as proper credit is given, or not restricted by the original author or source. **Advertising:** Advertising is welcome from both our members and commercial sources. For current advertising rates, please send an email to the Editor requesting a copy of the Ad Rates file. **Address Changes:** Any recipient of the newsletter is urged to submit a change of address notification to the Editor, either via US Mail to the address shown below, or (preferably) via email, so we may keep our records accurate. **Newsletter Exchange:** CUE welcomes newsletters from other user groups. If you would like to exchange newsletters, either by US Mail or via electronic (Internet) delivery, please send your newsletter to the address listed below. We will add your name to our mailing list and send you our newsletter in return. **Submissions:** Submissions are always welcome from our members or outside sources. Submissions may be articles, images, cartoons, etc. For first time authors, please request a copy of our Submissions Guidelines from the Editor, prior to submitting any items. This will help to eliminate publication delays. Submissions are due by the 5th of each month. **Correspondence:** General correspondence to CUE may be sent via US Mail to: Computer Users of Erie, PO Box 8941, Erie, PA 16505-0941 USA. Email to: [cuerie@gmail.com](mailto:cuerie@gmail.com). Editor Email to: [grimcyber@yahoo.com](mailto:grimcyber@yahoo.com).



## Intentionally Blank

This page is intentionally left blank. Of course, it is left blank except for any words saying that it is blank, which technically causes a paradox!

It could be a test to see if you are fully reading this document!

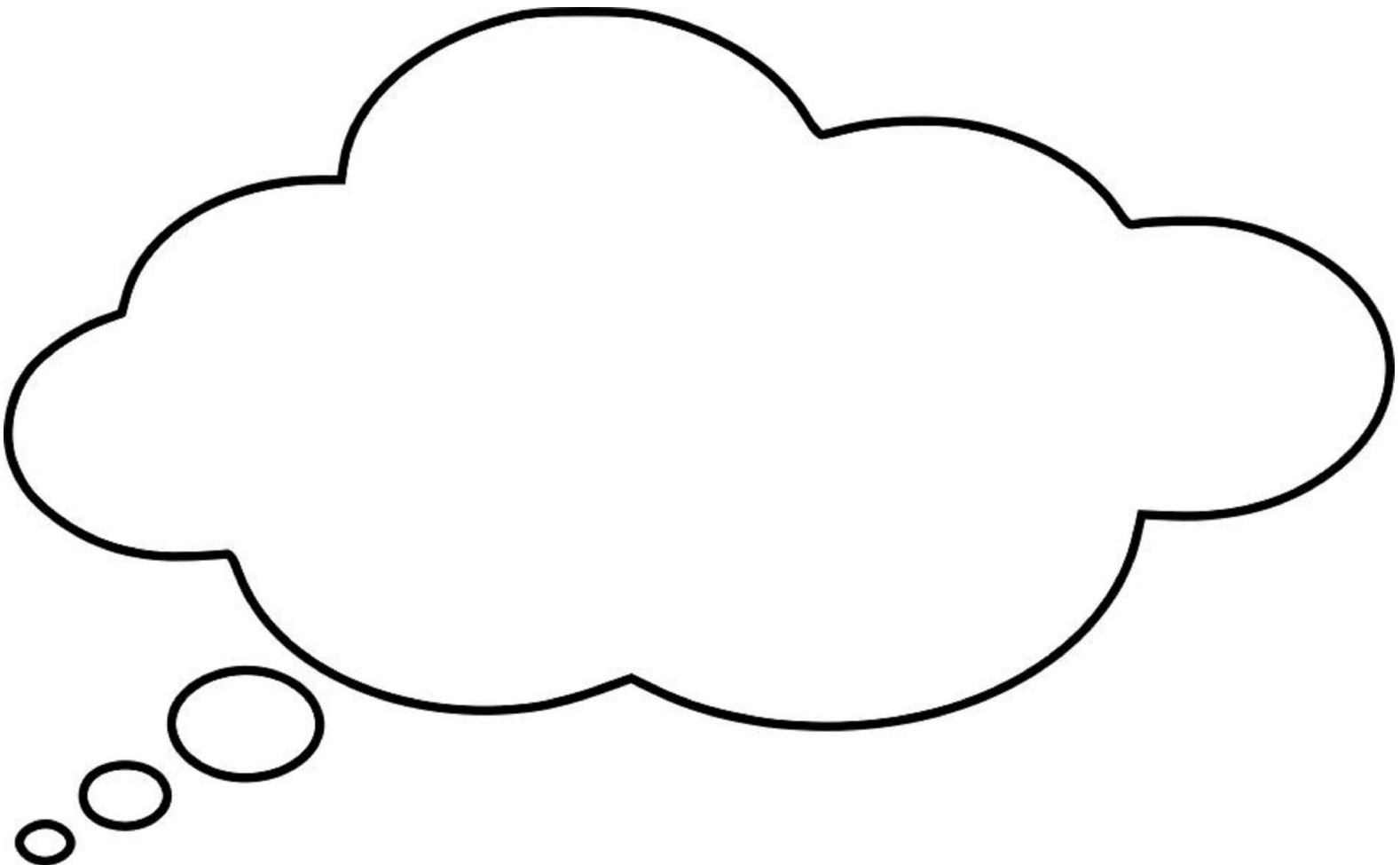
It is also a way to keep a document with an even number of pages, which can be convenient in formatting, printing, place-holding, space-filling, and content separation.

This page could have been totally blank but then you might assume there was something wrong and that an error had taken place.

For this document, the “blank” page, which really isn’t blank of course, is allowing for an even number of pages.

So, now, this document can no longer be called “odd”!

Feel free to use the rest of this page for thinking and taking notes!



# CUE Membership Benefits



As the largest computer users group in northwest Pennsylvania, CUE has served Erie and surrounding communities since 1982. CUE provides a forum for people to learn about computers and have fun doing so. The group meets the third Thursday each month, with the exception of the months of July and December. In July the group gathers for a picnic and December is the annual holiday party (dates vary). CUE meetings are at Wayside Presbyterian Church, 1205 Asbury Road, Erie. Meetings from April through October are at 7:00 p.m. From November through March, the meetings are at 10:00 AM in the morning.

Our monthly meetings are open to the public regardless of age or ability. Many of our members are senior citizens who span a wide range of capabilities and interests but share a desire to know more about how to use computer related technology. Our role is to provide a forum for continuous learning from each other. CUE has a closed Google gmail group that is used to communicate with members and to post questions/problems to seek answers from the membership. Members pay an annual membership fee of \$24 to receive a membership directory, monthly newsletter, availability to monthly general meetings, and any of the Special Interest Group (SIGs) meetings, usually held in a member's home. Locations and times vary, so check the online EVENTS Calendar on the website for the latest information. SIG topics include:

- Digital photography [and photo safari]
- Genealogy
- Macintosh computers
- Computer troubleshooting
- Beginners users group (BUG)
- Handheld smartphones and tablets

CUE is a member of the Association of Personal Computer User Groups (APCUG). APCUG is an International, platform-independent, volunteer-run, non-profit organization devoted to helping member User Groups offer enhanced services to their members. Some of the membership benefits include:

- Speakers bureau
- Free virtual technology conferences
- Regional conference
- Push newsletter articles
- Discounts and special offers from vendors
- User group newsletters online

Find us online at <http://www.cuerie.com/>. And Facebook @cuerie

Computer Users of Erie  
PO Box 8941  
Erie, PA 16505-0941

Postmaster:  
Address Service Requested



Address label here