

COMPUTER USERS OF ERIE

CELEBRATING 36 YEARS

SERVING NW PENNSYLVANIA First

Programed in 1982

CUE Newsletter - February 2019 (Volume 36 Number 02)

Valentine Heart in a Fractal!



February CUE Meeting

The next CUE members' meeting is on Thursday February 21st at 10:00 AM, with a remote presentation after the meeting, by Tom Kuklinski, on Cutting the Cable Cord.



CUE is part of APCUG



An International
Association of Technology
& Computer User Groups

CUE Calendar



Calendar events are subject to change. SIG stands for Special Interest Group.

CUE Membership Meetings (typically 3rd Thursday of each month)

Thursday February 21st at 10 AM

Thursday March 21st at 10 AM

Beginner's User Group (BUG) SIG Meetings

To Be Scheduled Upon Request

Digital Photo SIG Meetings (typically 1st Wednesday of each month)

Wednesday February 6th at 7 PM

Wednesday March 6th at 7 PM

Genealogy SIG Meetings (typically 1st Tuesday of each month)

Tuesday February 5th at 7 PM

Tuesday March 5th at 7 PM

MAC SIG Meetings (typically 2nd Saturday of each month)

Saturday February 9th

Saturday March 9th

Smartphone & Tablet SIG Meetings (typically 4th Monday of each month) (RSVP John Fair)

Monday February 25th at 7 PM

Monday March 25th at 7 PM

Preview of Presentation at February CUE Meeting

by Tom Kuklinski at Computer Users of Erie

Cut the Cable Cord!

This will be a remote presentation. The objective will be to show you some options in Over the Air TV Reception and Streaming TV. You will learn why millions of people are choosing this rather than expensive cable or satellite TV. You will be shown options available to those with and without high speed internet.

There will be a Question and Answer session.



Amazon Echo Dot Prize!

APCUG, the national computer users group that CUE is associated with, held a contest for computer groups who renewed early this year with APCUG. They drew three names of computer groups and CUE was one of the three winners of an Amazon Echo Dot! CUE then drew members' names at the January CUE meeting with Hal Kelley being the winner of a free Amazon Echo Dot! The Dot is a voice-controlled smart speaker with digital assistant Alexa. It can be used with a smartphone or tablet.



Winning Drawn Ticket
Double a prime number
of 229591

From the President's Desk...

Members, I continue to Thank you for your numerous technical questions and ideas to improve the Computer Users of Erie organization. This year, we already have several new members and a few more expressing interests to join our membership roster.

We are currently planning several presentations in the upcoming months from the leaders of the various Special Interest Groups and by others. Collectively, we initially joined the club to share our ideas and ask more and more Questions. Our status, our ideas, and our goals are shared with the long-standing practice of maintaining progress via our online Newsletter. I express my delight to John Fair on the gathering of the excellent articles he finds and publishes in order to document our pathway to using technical resources. At the regularly scheduled 10 AM Meeting on the third Thursday of this month, Tom will present a new topic. As part of this presentation, we will continue to demonstrate the usefulness of your membership.

In December, our membership gathered to celebrate another year of progress in our Collective Interests ranging from Photography, Making Presentations, Technology, Writing and scripting Documents, Family History Genealogy, Android Cellular Phones, iPhones, iPads, and of course keeping your laptop computers absolutely virus-free. Please continue to attend our monthly meetings and feel free to share your success stories as we continue to explore the latest and best Software and Technology in order to further our mutual goals.

I am again reminded of the simple beginnings of this long-term organization and look forward to our planned speakers and events. I look forward to your inputs as to the purposes for which your membership provides. YOUR questions and ideas inspire myself to continue this planned direction long past the calendar date for our next presentation. Hopefully, See you at our next meeting.

Regards, and Thank You,

Paul D. Francis



My Internet is Down

by Lou Cioccio at Computer Users of Erie

Recently as I was getting ready to go to the eye doctor for a semi annual eye exam. I got a phone call from St Johns - Holy Rosary that the office manager, that her internet was down but others in the office had internet.

She had done the drill, rebooted her computer and cable modem, but it did not work for her. I told her of my appointment and that I should be there close to noon. She said she would be there.

Sure enough she did not have and internet; so I proceeded to look at her ethernet connection in Settings/Network and Internet and the ip address was correct, as I have all the computers have static IP addresses for each one. I selected "change adapter options" and right clicked on Local Area Connection which is the network adaptor. I then clicked on Properties and selected Internet Protocol Version 4, which will show the IP Address, and it was correct.

In this office it does not have a complete ethernet connection wire and has a coupling, a point where two cables meet, that can cause an open connection. So I verified by disconnecting and reconnecting to hear the solid click. I went back to her connection at her computer and still no connection, and she could not see any other computer.

I then proceeded to turn on my laptop and connect her cable to me and I get the same thing. So I am thinking that maybe a cable worked loosed at the bridge box in the basement. I go down stairs to the

basement and push all the wires in as we are hard wired to various locations in the 3 story rectory.

This included two network copy/printer stations and various computers that they use. I happen to see a 3 foot cable so I plug it in to the bridge with my laptop to find out. I have no internet and cannot ping in command line to the router.

Now I am scratching my head (no wonder I am bald) this does not make sense to me. I go back upstairs and ask Fr. John do you have internet and sure enough he does then I ask him to click on the lower right, the network icon, and I see it's wireless not wired. Then I go to the bookkeeper office and ask her to do the same, and hers is wireless.

Then I remembered how we are hooked up! The cable modem is on the 1st floor then it goes down to the basement to the router then to the bridge. The cable modem is ALSO wireless....DOH!!!! As Homer would say!

The famous STUCK BIT as I call it. I go back to the basement with the office manager and bookkeeper to show them if this happens, as they should all be wired in the network.

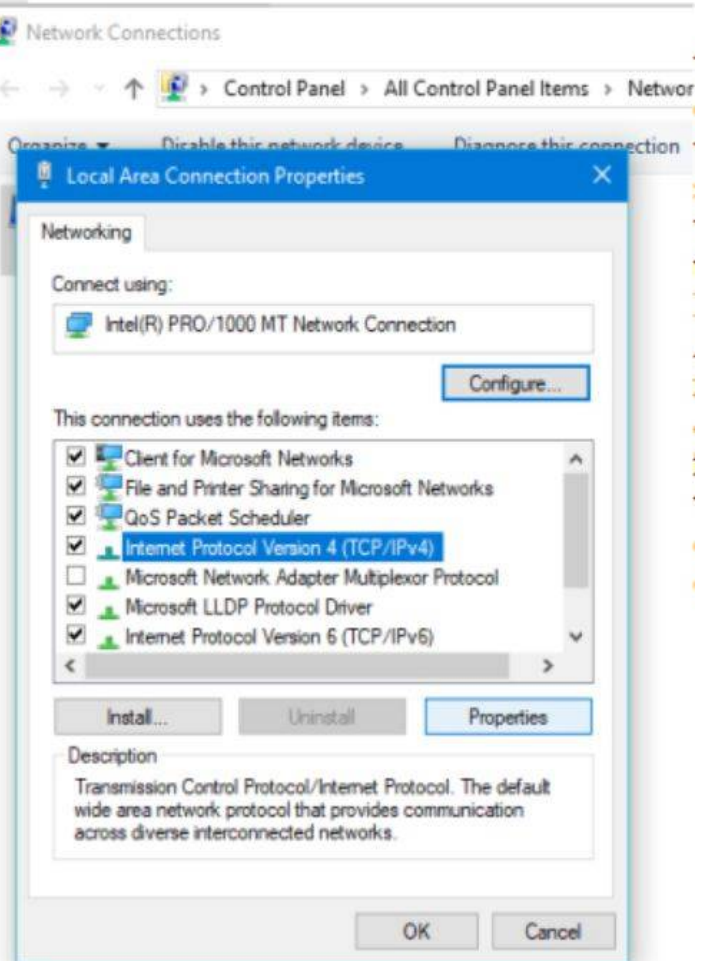
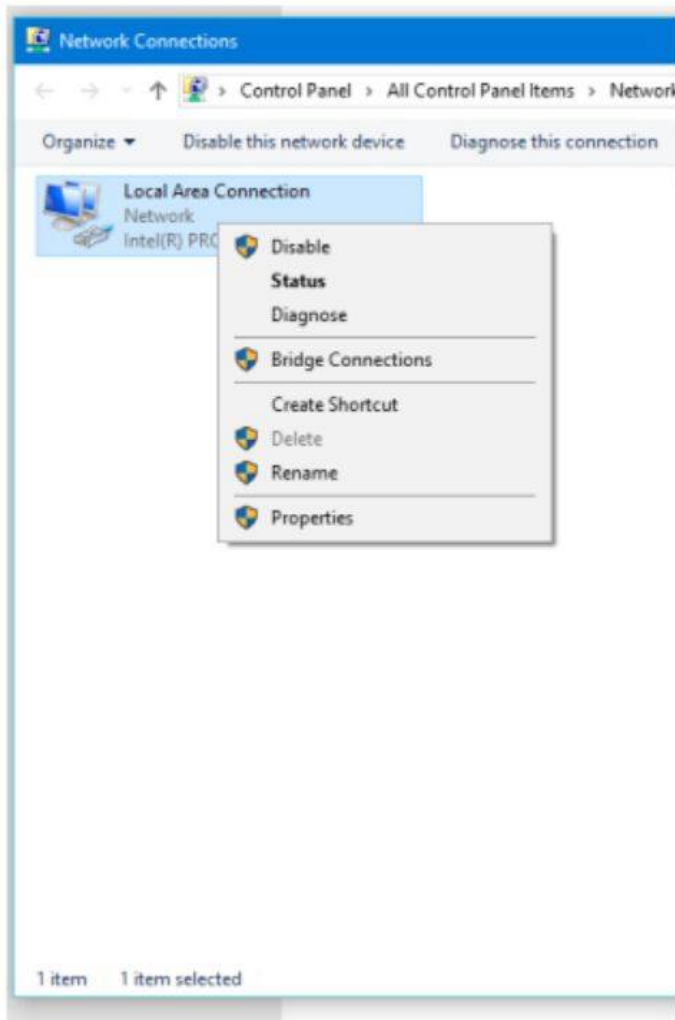
I unplug the router and bridge for about 30 seconds then replug them. We go back upstairs and the wired network is working.

Now you may have asked, "well you had some wireless computers work?", but the problem would be if they wanted to print to

My Internet is Down Continued

any printer that is on the network, it would not work as they (copier/printers) are hard wired and have no wireless capabilities.

So now you know how a little trouble shooting can solve some problems which took me about an hour to figure out.



Three Dimensional Printing Available at Erie PA Library

by Don Grim at Computer Users of Erie

Remember when CD writers and DVD writers were too expensive to use? Then, with popularity and mass production, the cost became affordable. It has become that way with 3D printing. You can purchase a 3D printer for home use for about \$100 but a \$700 3D printer would match the quality of a 3D printer at the Erie library.

A salute goes to CUE member Allison McKinstry for telling CUE about 3D Printing available at the Erie County Public Library (www.erielibrary.org). Allison also corresponded with Jude Shingle, Emerging Technology Librarian, who gave a demo to CUE on 3D Printing at the August 2018 CUE meeting.

The Idea Lab at the Erie Library has four 3D printers. Once you take a free 90-minute course on 3D Printing at the library, you are able to use those printers. The only cost is for the plastic that you print, at a reasonable cost of 10 cents per gram. 3D printing basically heats plastic to 500 degrees, placing the heated plastic from bottom to top until it completes your 3D object.

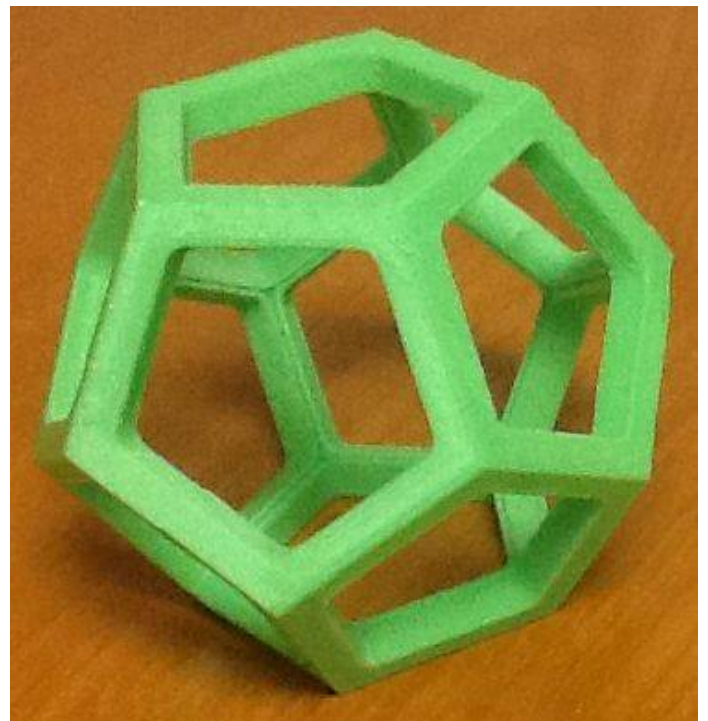
What do you want to 3D print? It depends on your interest. My first printouts were objects of mathematical interest. The sky is the limit. You could use the library's 3D scanner (valued at about \$100 if you want to buy one for home) to create a copy of a current object. You could create your own model file (free at www.tinkercad.com). However, the easiest option is to find a model file that is already created, and not "recreate the wheel". You can find many

model files (google it) already ready to print for free, or low cost, on the web. Many model files have a file extension of stl though others have an extension of obj. The library class recommended, and showed www.thingiverse.com to find free stl model files.

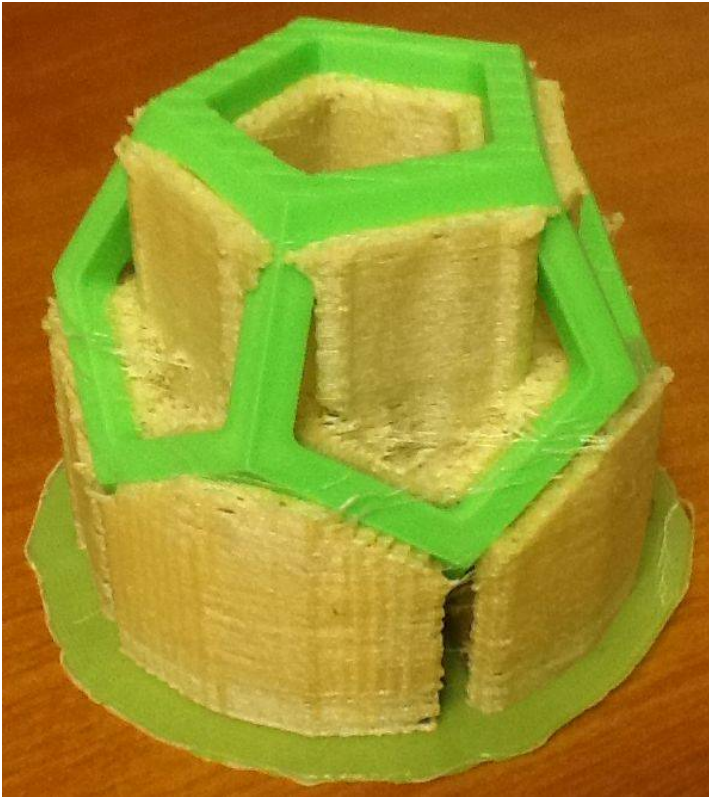
I found a free regular dodecahedron stl model file at sketchfab.com:
<https://sketchfab.com/models/0f6010b13532443db0434a3a41b709ae>

I found a free isometric tesseract stl model file (4D Cube) at thingiverse.com:
<https://www.thingiverse.com/thing:871476>

My first 3D Printout is a regular dodecahedron which has 12 pentagons formed together. If you smooth it out, it would be a soccer ball. I guess I can make a pencil holder out of it. It is in my favorite color, green, more specifically neon green!



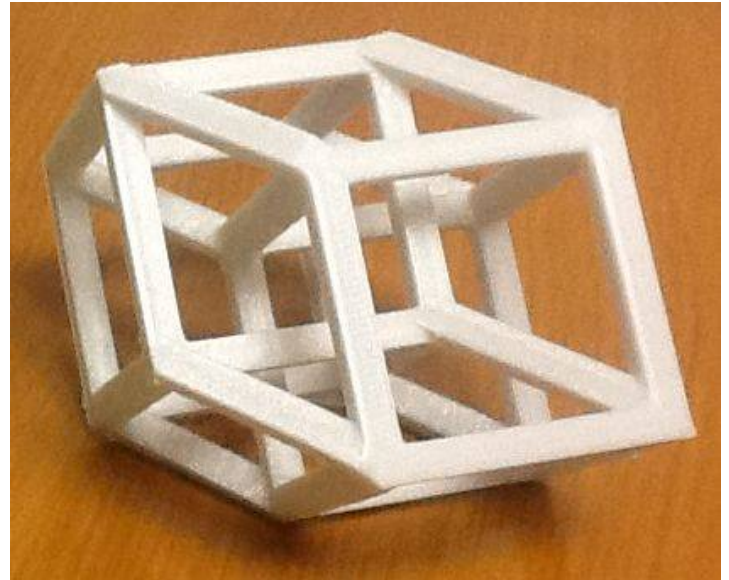
Three Dimensional Printing Continued



My wife saw it first and said “Sorry, it’s a dud”! She said it looks more like a birthday cake. However, it is fine! The 3D printer prints packaging material, called support, while it is printing the object. The green plastic (PLA – Polylactic Acid) is hard. The yellow plastic (PVA – Polyvinyl Alcohol) is soft and keeps the PLA from sagging when it is hot during the printout. The PVA peels off, or wipes off with water, since it is water soluble, making it friendly to the environment. My wife said the PVA looks and feels like an ice cream cone, another food reference!

My second 3D Printout is an isometric tesseract (4D Cube). Since, we can’t see the fourth dimension, it is actually a projection of a 4D Cube in 3D space, just like a 3D cube written on a piece of paper is a projection of a 3D Cube in 2D space. The 4D Cube is 3D printed in glow-in-the-dark plastic. So, not only does it catch a glimpse of the fourth dimension, it shows a

glowing fourth dimension at night, perhaps suitable for the Twilight Zone!



Once you have a model file that you want to print, you can include the finishing touches with finalizing software called Ultimaker Cura, a free program available at the Idea Lab at the library. It allows you to adjust position, adjust size, and set PVA support (if needed). Those adjustments will also adjust how long the printout will be, since the Prepare button gives the estimated printing time and weight. Once that is finalized, you will have created a “gcode” file, which is a file that ends in an extension of “.gcode.gz”. The 3D printer accesses your gcode file, from a jump drive connected to the USB port of the printer, to print your 3D object!

Though the Idea Lab has plastic, the class mentioned how 3D printing has been used with food, concrete, metal (laser powder), and cells (for body parts). Imagine a day when you can have replacement body parts made from your own cells! The imagination is limitless for possible improvements in the future!

Secretary's Report for 1/17/19 CUE Meeting

Members Present: Paul Francis, John Fair, Sue Mueller, John Szympruch, Don Grim, Santa Merrifield, Liz Wisniewski, Anne Rosthauser, Nancy Group, Ed Group, Tim Donlin, Connie Edwards, Don Rhodes, Lou Cioccio, Conrad Sobczak, Carol, Repoff, Joanne Kleinhantz, Bob Jaworski, Carol Korn, Allison McKinstry, Janice Castro, Hal Kelley

Guests Present: "none"

The number of members present (22) exceeded 14, the number needed for a quorum (20% of 74 total members).

The meeting was started by president Paul Francis at about 10 AM.

This meeting started a second sign-in sheet. Besides the regular sign-in sheet for CUE, there is a sign-in sheet for the church, where we meet.

The minutes for the November meeting were mentioned to be in the newsletter. The minutes were accepted by the members for approval. There was no December meeting other than a Christmas / Holiday party in December.

Treasurer Suzanne Matthews reported information on the treasury including \$674.90 of expense and \$65 of income. The current treasury balance was stated as \$3,935.29. The report was accepted by the group for approval.

Hal Kelley reported on the Genealogy Special Interest Group. There was no meeting in January and the next meeting is the first Tuesday in February (2/5/19).

Lou Cioccio reported on the Digital Photo Special Interest Group. There was no meeting in January and the next meeting is the first Wednesday in February (2/6/19).

Lou Cioccio reported on the Macintosh Special Interest Group. Lou mentioned that the January meeting was well attended and they fixed a MAC computer during the meeting. The next meeting is the second Saturday in February (2/9/19).

John Fair reported on the Smartphone & Tablet Special Interest Group. There was no December meeting and the January meeting was not scheduled until 1/28/19. Therefore, there was nothing new to report.

The floor was opened up for any unfinished business. Conrad Sobczak asked if he could reserve a spot for the CUE Picnic in July, to avoid it becoming unavailable. That was approved by the club.

The floor was opened up for new business. John Fair mentioned that the ICON Computer Users Group (www.iconusersgroup.org), in Springfield Missouri, included John's article on passwords in their January newsletter. They asked for John's picture for they include a picture of an author beside each of the articles that they publish. Don Rhodes asked if Zoom video conferencing was going to be used again at club meetings. John Fair mentioned that it is under testing before it is used again. There is more of an audio issue to fix than a video issue. Don Rhodes mentioned that

Secretary's Report Continued

the set up of surveillance cameras is fairly easy. Lou Cioccio mentioned that Windows 10 has a program called "Game Bar". It allows you to capture screen shots or capture video running to the screen. It could be helpful in preparing tutorials or capturing information to view again. It has the "Game Bar" name since gamers can use it to capture game play records.

There was a request to adjourn the meeting. The members approved the adjournment of the meeting. There was a 50/50 raffle with \$19 going to someone in attendance and \$19 going to CUE. There was also a free drawing to CUE members to win an Amazon Echo Dot. John Fair's name was drawn but he passed since he

has used Dots. The next name drawn was Hal Kelley who then won the Dot! CUE received the Dot from APCUG, the national computer users group. Since our treasurer Suzanne Matthews renewed early with APCUG, CUE was entered in a drawing for the Dot. CUE was one winner out of three totals winners of computer groups associated with APCUG.

A demo followed the meeting from Sue Mueller on saving and sleuthing. Sue handed out information, and showed information on a screen, with useful tips on saving money and searching for people.

Respectfully Submitted,
Don Grim, Secretary

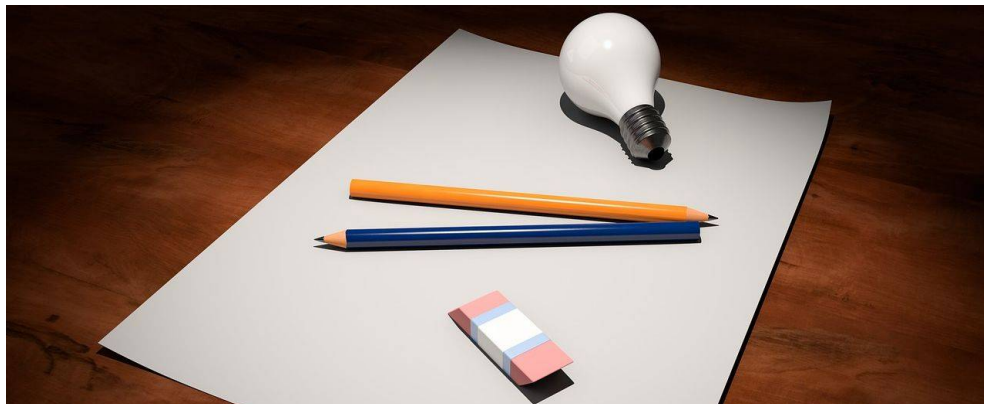
A Note from the Interim Editor

As usual, I'll remind you to feel free to contribute information for the CUE newsletter. Whether it is small, large, an article, a tip, information, or pictures, you can send it to me and I will plan to include it in the newsletter. You can reach me at grimcyber@yahoo.com.

Speaking of contributing, be thinking if you want to be part of the club as an officer or board member. Elections will be in April.

We'll continue to provide the newsletter by web link rather than by an email message. There have been no complaints about it and few questions. So, it seems people are comfortable with the new way to get the newsletter. Once at the web link, you can view newsletters there and/or download them to your computer.

Editorially, Don Grim



Sue Mueller's Handout from 1/17/19 CUE Meeting

Oh, the Places You Can Go:

Sleuthing & Saving

suepasta@roadrunner.com

Finding live people (determine first if person is deceased)

Search google and social media for person; extend search to family members; look for family obituaries to determine location and/or whether deceased. Recent major newspaper obituaries (2000 forward)

<http://www.legacy.com/>

Social Security Death Index (excludes most recent 3 years): Genealogy bank-- while a subscription service, the SSDI portion is free

<http://www.genealogybank.com>; also available on ancestry and family search; another source <https://www.stevemorse.org/ssdi/ssdi.html>

White pages, 411(address, phone number, age range, associated names; reverse lookups, house information on whitepages) use free parts for basic information: <http://www.411.com> \$; <https://www.whitepages.com/> \$

Exact date of birth, reputation score (related to court records):

<https://www.mylife.com/> \$

Totally free address, phone, age, associated names, former cities of residence; reverse look-ups phone or address:

<https://www.truepeoplesearch.com>; <https://www.fastpeoplesearch.com/>

Familytreenow: current address, other family members/associated names often including parents and children with married name; also year of birth

<http://www.familytreenow.com>

Background checks, public records, and recent judicial records

Free public records and where to find them: <http://www.allfreerecords.com/>

Best sites to find public records for free: <https://www.lifewire.com/public-records-online-free-3482360> <https://izea.com/2011/12/07/5-websites-for-sleuthing-out-story-information/>

Searching online background checks and criminal records

<https://backgroundchecks.org/>

Rest of Sue Mueller's Handout from 1/17/19 CUE Meeting

Judicial branch links by state: <https://www.ncsc.org/information-and-resources/browse-by-state/state-court-websites.aspx>
<https://ujportal.pacourts.us/CaseInformation.aspx>

Pennsylvania judicial records, common pleas (criminal court) and magisterial courts: <https://ujportal.pacourts.us/CaseInformation.aspx>

Shopping/getting the best price

Track prices on Amazon (also tracks hotel prices)

<https://camelcamelcamel.com/>

Browser extension to find coupons and best prices:

<https://www.joinhoney.com/>

Put an item in your cart with you contact information, but no credit card; leave item in cart; many retailers will follow-up with an incentive to purchase

Be a smart online shopper:

<https://www.onemainfinancial.com/resources/everyday-living/how-to-be-a-smart-online-shopper>; <http://www.parkarbuzz.com/5-tips-on-how-to-be-a-smart-online-shopper/>; <https://www.pcmag.com/feature/364896/14-tips-for-safe-online-shopping>; <https://www.bbb.org/article/tips/14040-bbb-tip-smart-shopping-online>

Always check prices on E-bay: <https://www.ebay.com/>

Assorted saving techniques

Airline travel: best and worst days to fly: www.smartertravel.com/best-worst-days-fly/ Tips for finding cheap airfare: <https://www.smartertravel.com/10-tips-finding-cheap-airfare/>

Find best prices for gas in US/Canada: <https://www.gasbuddy.com/>

AAA membership to find best price on new or used vehicle:

automotive.aaa.com/auto-buying.htm

Home improvement professionals: <https://www.homeadvisor.com/>

Locate a shelter pet by breed, travel distance: <https://www.petfinder.com/>

PLEASE PRINT

**COMPUTER USERS OF ERIE
MEMBERSHIP APPLICATION**

Today's Date _____

Last Name	First Name
Address	
City, State	Zip
Home Phone	Cell Phone
Your Email	

The yearly dues are payable in August of each year. The dues are \$24 annual.

For NEW members only, when you join outside the annual cycle your initial dues are based upon the month you join. Follow the schedule below.

August \$24	September \$22	October \$20	November \$18
December \$16	January \$14	February \$12	March \$10
April \$8	May \$6	June \$4	July \$2

Information provided on this form will be placed into a CUE Membership Directory

What is your Computer or Device: (Circle)

Windows Mac Android iPhone iPad
Tablet Linux Other

What is your level of expertise? (Circle)

Novice I know some I want to learn more
Expert Geek

Send your completed application
to:

Computer Users of Erie

PO BOX 8941

Erie, Pa 16505-0941

What do you wish to gain by joining Computer Users of Erie?

Student membership is just \$15 per year (provide proof of student status)

CUE Officer Information

Officers

President	Paul Francis	pdfflyer@roadrunner.com	814-882-1175
Vice President	John Fair	johncfair@gmail.com	814-474-3055
Secretary	Don Grim	grimcyber@yahoo.com	814-461-8289
Treasurer	Suzanne Matthews	pdxmatthews@aol.com	814-790-4185

At-Large Board

Janice Castro	janicecastro@gmail.com	814-543-9128
Lou Cioccio	lcioccio@mac.com	814-868-1320
Hal Kelley	hal_kelley@outlook.com	814-836-1803
Susan Mueller	suepasta@roadrunner.com	814-688-1262
Conrad Sobczak	hatsob@verizon.net	814-899-9699

Alternate At-Large Board

Marsha Keller	dekma43@gmail.com	814-449-4682
Allison McKinstry	alli25@yahoo.com	814-602-4863
George Younkin	gry10750@gmail.com	814-833-3144

Special Interest Groups

Beginner's (BUG)	Lou Cioccio	lcioccio@mac.com	814-868-1320
Digital Photo	Lou Cioccio	lcioccio@mac.com	814-868-1320
Genealogy	Hal Kelley	hal_kelley@outlook.com	814-836-1803
MAC	Lou Cioccio	lcioccio@mac.com	814-868-1320
Smartphone & Tablet	John Fair	johnfair@roadrunner.com	814-474-3055

Other Resources:

CUE Historian	Tom Kuklinski	tkuklinski@gmail.com	814-746-9165
DOS Information	Don Grim	grimcyber@yahoo.com	814-461-8289
Editor	Tanya Mattson	449tln@gmail.com	814-833-1404
Interim Editor	Don Grim	grimcyber@yahoo.com	814-461-8289
Librarian	Tanya Mattson	449tln@gmail.com	814-833-1404
Webmaster	Tom Kuklinski	tkuklinski@gmail.com	814-746-9165

CUE Disclaimer

The Computer Users of Erie (CUE), a nonprofit affiliate of APCUG, is not connected with, nor does it represent the interests of such organizations as IBM, Apple, Texas Instruments, Microsoft, or any other manufacturer or vendor, nor can it assume responsibility for the accuracy or misrepresentation of materials or statements found in advertisements, articles, announcements, or presentations appearing in its newsletter or at CUE sponsored meetings. The members of the CUE Board of Directors, committees, and SIGs are volunteers giving of their time and energy to assist CUE members through education. CUE shall not be held liable in name or performance for the outcome of activities or agreements to provide services offered by any person in the name of CUE. CUE welcomes comments, letters, original articles and programs for its newsletter. Such materials may be submitted to: CUE Editor, P.O. Box 8941, Erie, PA, 16505-0941. Also you can email grimcyber@yahoo.com. Permission is hereby granted to other nonprofit computer user groups to reprint articles appearing herein, unless specifically restricted, provided credit is given to both its author, if known, and its original source.

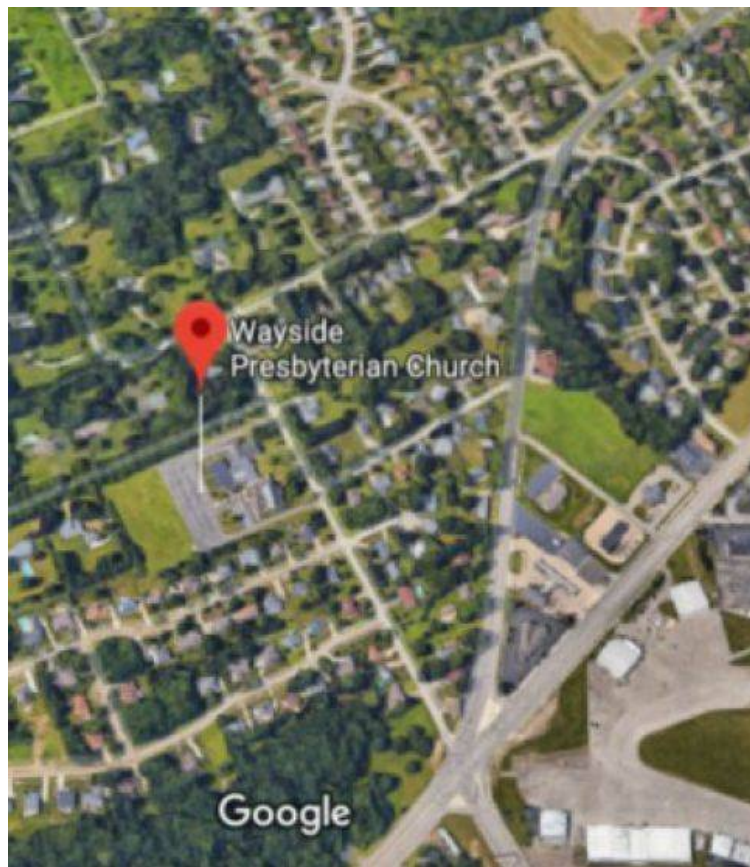
Directions to Wayside Presbyterian Church for CUE Meetings

Wayside Presbyterian Church, at 1208 Asbury Road, is approximately three blocks north of the intersection of Asbury Road and Route 5. This intersection is at the northwest corner of the Erie International Airport property. Following Asbury, turn left at the first marked driveway for the church. During the afternoon winter schedule (10:00 AM for the months of November, January, February and March), entry is through the two sets of blue double doors. Use the buzzer to gain entry if the doors are locked. During the normal evening schedule (7:00 PM the remaining months) use the double doors on the south side of the Christian Education wing. Signs are posted in the building to direct you to the meeting room.

From West of Erie International Airport: Follow Route 5 to the intersection of Asbury and Route 5. Turn hard left onto Asbury Road. Look for the church on the left approximately 3 blocks north of the intersection.

From South of Erie: Take Interstate 79 north to the 26th Street (Route 20) Exit. Bear left onto 26th Street (Route 20) west. Follow Route 20 about 3.4 miles west to Asbury Road. Turn right (at the Sheetz Gas Station) onto Asbury and follow it straight across Route 5. Look for the church on the left approximately 3 blocks north of the intersection.

From East of Erie International Airport: Follow 26th Street (Route 20) west to Asbury Road. Turn right onto Asbury and follow it straight across Route 5. Look for the church on the left approximately 3 blocks north of the intersection. OR, follow 12th Street (Route 5) west past the airport to Asbury Road. Turn right onto Asbury Road. Look for the church on the left approximately 3 blocks north of the intersection.



About the Newsletter

The CUE Newsletter is published monthly by the Computer Users of Erie (CUE), an independent nonprofit computer user group, dedicated to the education and support of our members. The opinions expressed herein are those of the individual authors or the editor, and do not necessarily reflect the opinions of CUE. This publication is Copyright © 2018 by the Computer Users of Erie. All rights reserved. Permission to reprint is hereby granted to any Nonprofit Organization, as long as proper credit is given, or not restricted by the original author or source. **Advertising:** Advertising is welcome from both our members and commercial sources. For current advertising rates, please send an email to the Editor requesting a copy of the Ad Rates file. **Address Changes:** Any recipient of the newsletter is urged to submit a change of address notification to the Editor, either via US Mail to the address shown below, or (preferably) via email, so we may keep our records accurate. **Newsletter Exchange:** CUE welcomes newsletters from other user groups. If you would like to exchange newsletters, either by US Mail or via electronic (Internet) delivery, please send your newsletter to the address listed below. We will add your name to our mailing list and send you our newsletter in return. **Submissions:** Submissions are always welcome from our members or outside sources. Submissions may be articles, images, cartoons, etc. For first time authors, please request a copy of our Submissions Guidelines from the Editor, prior to submitting any items. This will help to eliminate publication delays. Submissions are due by the 5th of each month. **Correspondence:** General correspondence to CUE may be sent via US Mail to: Computer Users of Erie, PO Box 8941, Erie, PA 16505-0941 USA. Email to: cuerie@gmail.com. Editor Email to: grimcyber@yahoo.com.

CUE Membership Benefits



As the largest computer users group in northwest Pennsylvania, CUE has served Erie and surrounding communities since 1982. CUE provides a forum for people to learn about computers and have fun doing so. The group meets the third Thursday each month, with the exception of the months of July and December. In July the group gathers for a picnic and December is the annual holiday party (dates vary). CUE meetings are at Wayside Presbyterian Church, 1205 Asbury Road, Erie. Meetings from April through October are at 7:00 p.m. From November through March, the meetings are at 10:00 AM in the morning.

Our monthly meetings are open to the public regardless of age or ability. Many of our members are senior citizens who span a wide range of capabilities and interests but share a desire to know more about how to use computer related technology. Our role is to provide a forum for continuous learning from each other. CUE has a closed Google gmail group that is used to communicate with members and to post questions/problems to seek answers from the membership. Members pay an annual membership fee of \$24 to receive a membership directory, monthly newsletter, availability to monthly general meetings, and any of the Special Interest Group (SIGs) meetings, usually held in a member's home. Locations and times vary, so check the online EVENTS Calendar on the website for the latest information. SIG topics include:

- Digital photography [and photo safari]
- Genealogy
- Macintosh computers
- Computer troubleshooting
- Beginners users group (BUG)
- Handheld smartphones and tablets

CUE is a member of the Association of Personal Computer User Groups (APCUG). APCUG is an International, platform-independent, volunteer-run, non-profit organization devoted to helping member User Groups offer enhanced services to their members. Some of the membership benefits include:

- Speakers bureau
- Free virtual technology conferences
- Regional conference
- Push newsletter articles
- Discounts and special offers from vendors
- User group newsletters online

Find us online at <http://www.cuerie.com/>. And Facebook @cuerie

Computer Users of Erie
PO Box 8941
Erie, PA 16505-0941

Postmaster:
Address Service Requested



Address label here