

COMPUTER USERS OF ERIE

CUE Newsletter – October 2021 (Volume 38 Number 10)



October CUE Meeting

The next general meeting is on Thursday October 21st at 7:00 PM, by a Zoom link in your email, with a Cyber Security demo by Bob Gostischa, including recommendations for free security software. The CUE Website Calendar section has more information on the meeting.



Visit the CUE
Website at:

www.cuerie.com

CUE is a member of APCUG



Member of
**An International
Association of Technology
& Computer User Groups**

CUE Calendar



Calendar events are subject to change. SIG stands for Special Interest Group.
(look for notices outside of the newsletter for delays or special news on meetings)

CUE Membership Meetings (typically 3rd Thursday of each month)

Thursday October 21st at 7 PM

Thursday November 18th at 7 PM

Beginner's User Group (BUG) SIG Meetings

To Be Scheduled Upon Request

Digital Photo SIG Meetings (typically 1st Saturday of each month except June/July/August)

Saturday October 2nd at 9:30 AM

Saturday November 6th at 9:30 AM

Genealogy SIG Meetings (typically 1st Tuesday of each month)

Tuesday October 5th at 7 PM

Tuesday November 2nd at 7 PM

MAC SIG Meetings (typically 2nd Saturday of each month except June/July/August)

Saturday October 9th at 9:30 AM

Saturday November 13th at 9:30 AM

Smartphone & Tablet SIG Meetings (typically 4th Monday of each month) (RSVP John Fair)

Monday October 25th at 7 PM

Monday November 22nd at 7 PM

Windows SIG Meetings (typically 2nd Saturday of each month except June/July/August)

Saturday October 9th at 1 PM

Saturday November 13th at 1 PM

CUE Christmas/Holiday Party

Thursday December 2nd at 6 PM

CUE Picnic Pictures from Janice Castro



CUE Picnic Pictures (one more from Janice Castro)



CUE Picnic Pictures from Carole Blakeslee



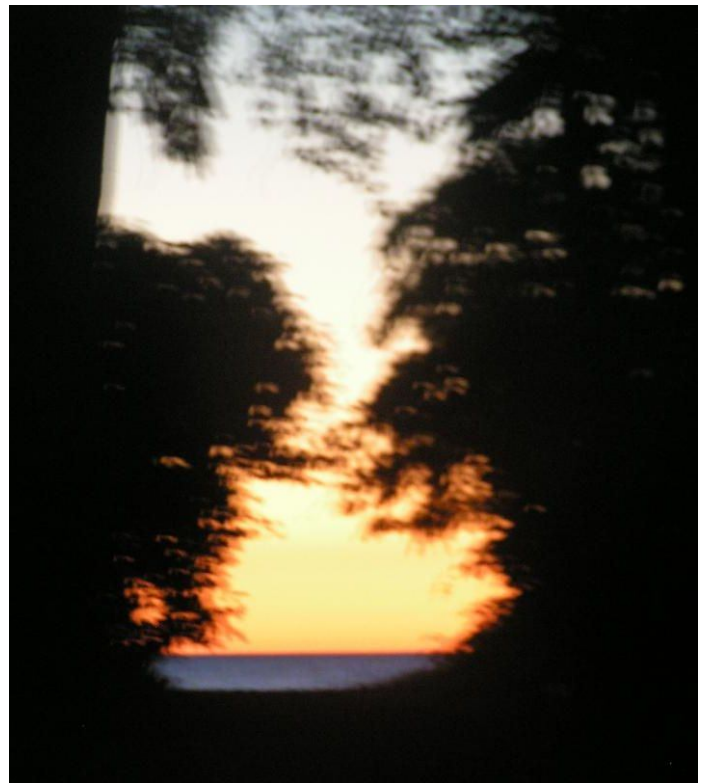
CUE Picnic Pictures from Carole Blakeslee



CUE Picnic Pictures from Carole Blakeslee



CUE Picnic Pictures from Carole Blakeslee



CUE Picnic Pictures from Carole Blakeslee



CUE Picnic Pictures from Carole Blakeslee

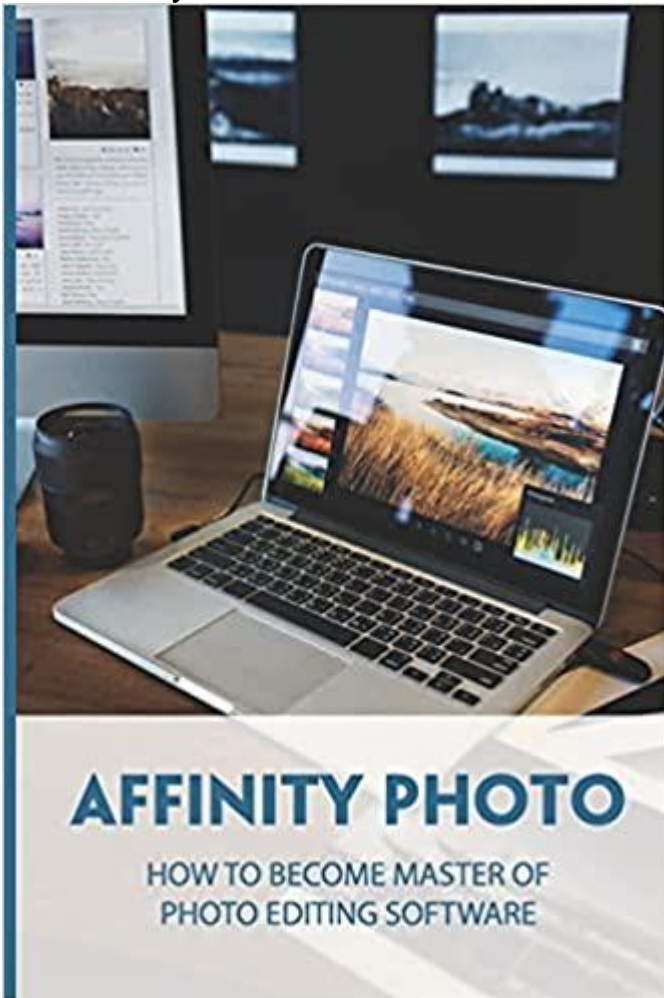


Thanks to everyone involved in making for an enjoyable CUE Picnic!

Review of Affinity Photo Book

By Lou Cioccio at Computer Users of Erie

I examined the book "Affinity Photo - How to Become Master of Photo Editing Software" by Blanch Quesada.



When you buy a book at a price of \$10, which is self-published, you do get what YOU PAY FOR. I will start off with the quality of the book which is paper back of pulp paper like you get with paper back novels and fiction!

Images are B&W but it was noted you can download the images. Well there is NO link nor can you get in touch with the Author:

1. The Name is not printed in the book ANYWHERE!

2. Links for getting on line training but NO COUPON CODE.

3. NO LINK to download the images to work on as I imagine they must be superb!! Or is that superfluous!!

No, I am not going to return the book but will show it off after the pandemic ends!

The author does go into detail how to work on the images but when you don't have them you might as well sing "You Don't Spit in the Wind" especially the line about the wind!

I am not sure how the person wrote it but with the most decent word processor you should be able to number the pages, do a TOC (Table of Contents) and finally an index. Not a hard concept if you know your way around a word processor like LibreOffice, Word, Open Office, etc!

So this is a NO BUY, save your money! On a better note I did order a better book that comes with images to work on and I was able to download the images.

I will be running an Affinity Photo Basic Class with this particular book that I should receive in time. As soon as I can examine the book and work on the tutorials, I will give an update. The PREREQUISITE on doing this future course is that you should be familiar with Photoshop or Photoshop Elements.

You can always download Affinity Photo that has a 30 Day trial and use it as comparison to Adobe's Photoshop and Photoshop Elements.

TI Lives through the 21st Century and Beyond!

By Don Grim at Computer Users of Erie

Back in the 20th century (1979 to be exact), Texas Instruments released one of the first computers, for home use, called the TI-99/4, and updated it to TI-99/4A in 1981. It became very popular with a strong support of continuing users, still today. With that dedication of users, I would not be surprised if it continues to be used for more centuries, especially with the availability of TI Emulators.



For some brave and dedicated users, they will continue to use the original TI and hook it up to an older TV or special monitor. Today, it is quicker and easier to run a TI Emulator on a Windows-based computer. One of the highly voted, easiest, and nicest TI Emulators is the Classic99 TI Emulator. It is so easy to set up and use, it is highly recommended for a prior TI computer user to look at, and use! Even if you have not used the TI computer before, you would find it interesting to look at, since it is a piece of computer history!

Here is the quick and easy way to look at Classic99. Just download it at:
www.harmlesslion.com/software/Classic99
You will get a file named classic99.zip and

you can put it at a folder of your choice. Right-click the classic99.zip file to extract all the files. Now you will have a classic99 folder, which you can double-click and you will see the classic99.exe file. Double-click classic99.exe and you are in! It now looks, and behaves, like the original TI 99 computer!

Classic99 comes with certain built-in cartridge programs. Click at Cartridge then Apps to go to Extended BASIC, Home Finance, Terminal Emulator, and more. Click at Cartridge then Games to go to Munch Man (like Pac-Man), TI Invaders (like Space Invaders), Video Chess, and more. If there are cartridges that you used in the past that are not in Classic99, there is documentation to add them and you would access them by clicking Cartridge and User.

Whether you are a prior user or new user, it would be good to go to Cartridge, Apps, and then Demonstration. If you then press any key, you will see a menu to run the Demonstration. That will show many capabilities and options for the TI 99 computer!

What is described above is certainly enough to have a nice experience with the Classic99 TI Emulator. However, if you want to take it a step further, you can also run programs written in TI BASIC (Beginner's All-purpose Symbolic Instruction Code). You don't have to write BASIC programs yourself. You can search for them on the web and bring them to your Classic99 TI Emulator. You can download some of my favorite programs,

TI Lives Continued

that I've written, at:

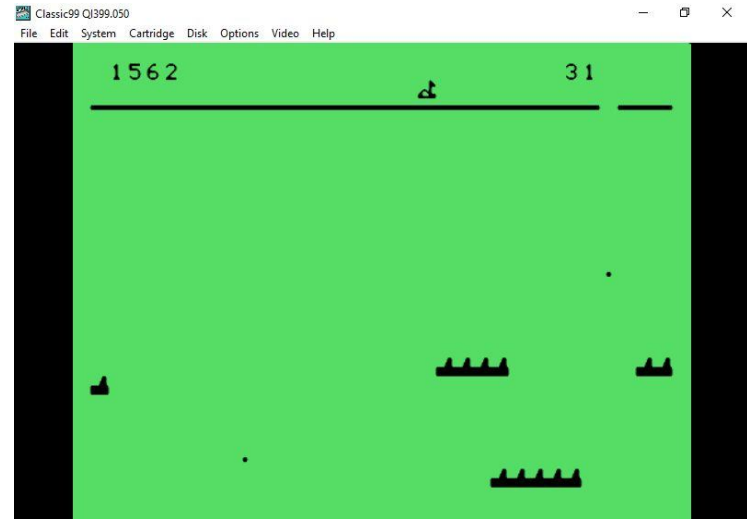
www.mathisapath.com/tiprograms.html

You can take a TI BASIC file and copy it to the DSK1 folder inside the classic99 folder. For example, if I copy my SUBGAME file to the DSK1 folder and then double-click classic99.exe to open Classic99, I press any key and then choose 1 for TI BASIC. To load the program, I type OLD "DSK1.SUBGAME". The program is then ready and I can type RUN to run the program, which is a submarine game in this case. To stop a program at any time, you can press Alt 4 which simulates Function 4 that stops a program on the original TI computer. To exit TI BASIC, just type BYE.

You can save the code (BASIC program statements) to a text file so that you have a record of it. For example, if I type LIST "CLIP", it saves the code to the clipboard memory. In Windows, I open up a file called "Sub Game Code.txt". I click Edit and Paste (or Ctrl V) and a copy of the program code is included in the text file!

Having code in a text file is convenient for that is another way you can load a TI BASIC program to the TI Emulator. For example, if you open "Sub Game Code.txt" in Windows, highlight all the code with your mouse (or press Ctrl A) then press Edit and Copy (or Ctrl C), you can then go over to TI BASIC at the Classic99 program and click Edit and Paste. It will put the entire code in TI BASIC! That can be handy if you find TI BASIC code in a file or simply copy code from the screen on the web. You would NOT need to manually input the code in TI BASIC. Instead you

can just copy and paste it to TI BASIC, as mentioned above!

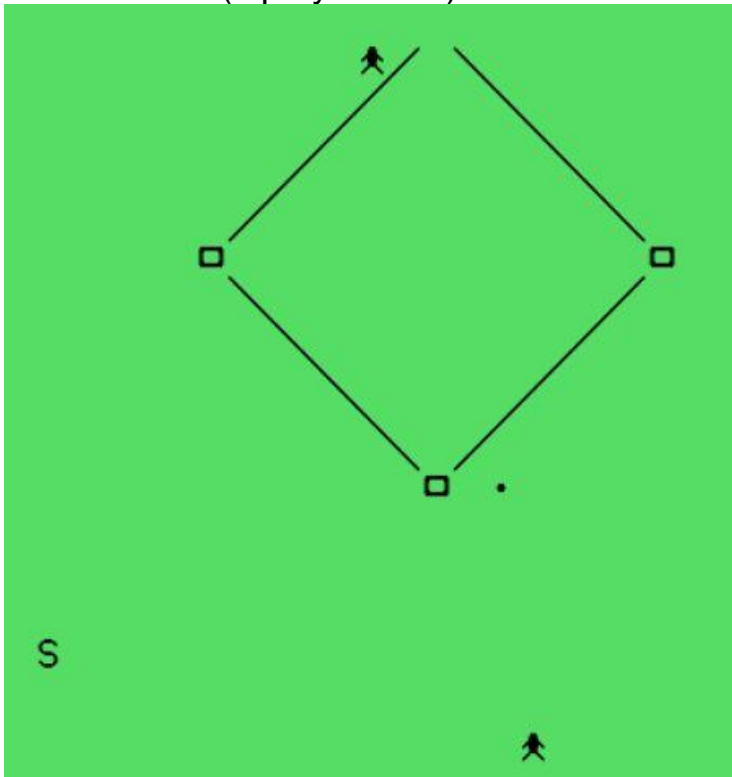


I will describe my favorite TI BASIC programs, so they will be easier to use. You run them with the OLD command as mentioned above. My two most favorite entertainment programs are SUBGAME (submarine game) and FLDPRAC (baseball fielding practice game). I put a demo of each game on youtube at <https://youtu.be/4bbokFtKxg8> and <https://youtu.be/l1oh4DvoKSw>. They are both challenging enough to bring you back (addictive) and fun enough to enjoy. If you do well enough with the submarine game, it will continue with bonus rounds that, theoretically, may never end! I recently scored as high as 1562 points (round 31). I challenge someone to beat my score! The submarine game shows instructions when you run it. Your main key is the B key for bombing.

The fielding practice game (FLDPRAC) allows you to be a baseball fielder. A baseball is hit at a random angle and a runner runs to first base at a random speed (S for slow, M for medium, F for fast). You press H to start the hit. You use keys of G for left, J for right, Y for up, and H for down. Once you get to the ball, the T

TI Lives Continued

key will allow a throw to first base. The computer will umpire a Safe or Out call. You can press any key to continue then press H to start the next hit to the field. The computer will accumulate scoring. An additional feature is that if you hit P instead of H to start a hit, it will override a fast runner. P stands for Playoff mode. Line 598 of the program (FOR X=1 TO 4) could be changed to change the speed of the program. If you set the number higher than 4, it makes the game less challenging (kiddie mode). I believe the 4 for line 598 allows for any play to be successful to make an out (if played well).



The ANSWERIT program will show letters to the screen so that you can press certain keys to have a computer voice say certain lines. I wrote it as a comical way to answer a phone call. TI speech has many options and capabilities in which you can make the speech sound almost human! It is from the highly celebrated speech technology that brought the TI "Speak & Spell" toy in the

1970's. You would need to run ANSWERIT in TI Extended BASIC which allows for speech. At Classic99, you would click Cartridge then Apps then Extended BASIC. Then press any key and chose 2 for Extended BASIC. You can run the program from there (OLD "DSK1.ANSWERIT").

```
ENTER LETTER (A-M)
A - I AM A COMPUTER
B - WHO ARE YOU
C - SAY WHAT
D - DO YOU WANT TO START ..
E - UH OH
F - HELLO
G - GOODBYE
H - I DO NOT UNDERSTAND
I - WHAT WAS THAT
J - TRY AGAIN
K - THAT IS RIGHT
L - THAT IS INCORRECT
M - YOU ARE FINISHED NOW
```

```
* READY *
>OLD "DSK1.SPELTEST"
>RUN
? CASSETTE
CASSETTE
?
```

The SPELTEST program uses speech so it needs to run in Extended BASIC also. This is a small program to just show the capability of a spelling test. It could be expanded where it would have you input a list of spelling words (perhaps the latest child's spelling words to study) then the computer can speak the words, have you type them, and tell you if your spelling is correct or incorrect. It is basically writing your own "Speak & Spell" program.

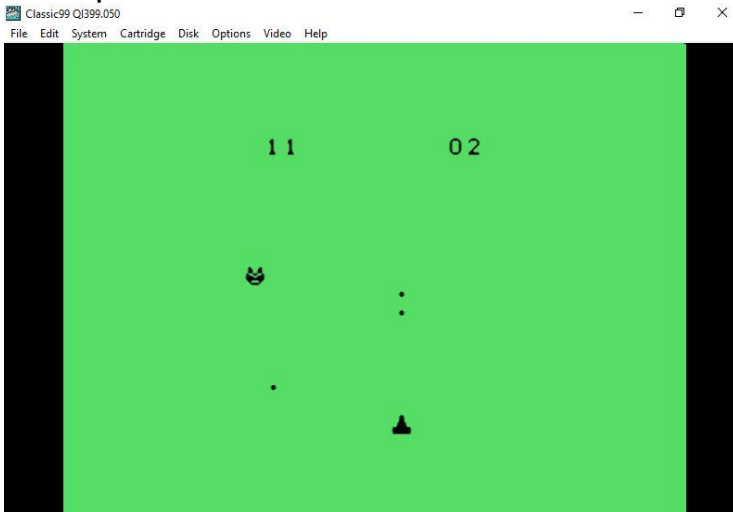
```
TI BASIC READY
>OLD "DSK1.MUSKEY"
>RUN■
```


TI Lives Continued

The MUSKEY program is a simple musical keyboard. If you press the keys at the middle of the computer keyboard (A, S, D, F, G, H, J, K, L, and ;), you are pressing the musical scale of notes from key A for note A (220 hertz), key S for note B (247 hertz), all the way up to key ; for note C (523 hertz). You could expand it for other musical notes.

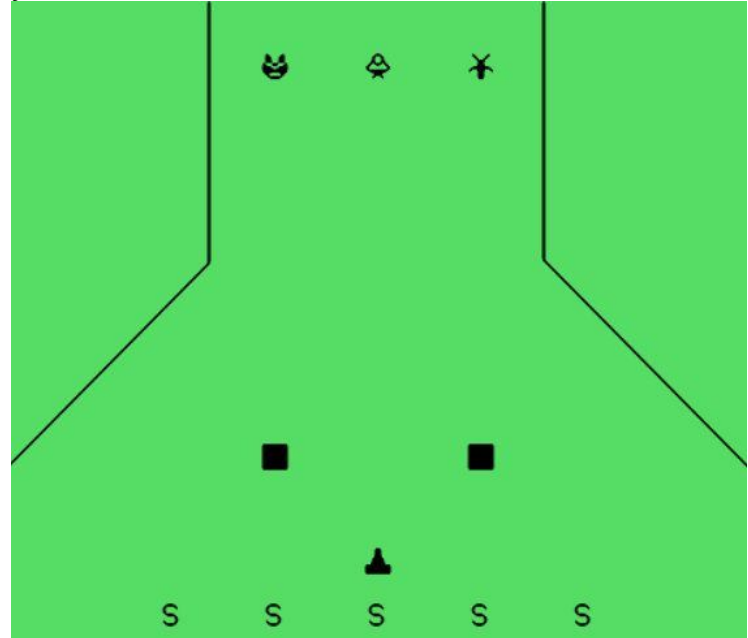


The SOUNDEF program gives some options for sound effects. It is a reference for picking sound effects to use in other programs. There is a pause after each sound effect. You can press any key to move on to the next sound effect in the line-up. There are 8 sound effects.



The PHOENIX program is a fairly simple game. It's a good one for the youngest of kiddies. It is not very challenging but it is interesting how the enemy follows you and hovers around you. It will fire at you and you can fire at it. The H key will start the

game with the G key to move left and the J key to move right. You fire at your enemy with the T key. The enemy was written with a sole purpose to hover and follow you forever!



It has been said that you should always have some “unfinished work”. It keeps you busy, or keeps you thinking, or keeps you confused, perhaps! This is my “unfinished program” called SPACEIN. I started it years ago as a 3D space invaders game where the path of bombs angle in 3D and bombs get bigger as they approached you, like in 3D. Maybe I'll finish it one day and maybe I will not! I leave the code for others in case, perhaps, one day, or one century, someone else will finish it!

The FUNCAREA program will calculate the area under a curve. For example, for the default function of x^2 , without the computer, you would manually integrate the function to get $\frac{1}{3} x^3$ and, evaluating it from 0 to 2, you would get an area of 2.666... or $\frac{8}{3}$. However, some functions are impossible to integrate, like x^x . That is where a program like this can calculate the area by adding small amounts under

TI Lives Continued

the curve. You just edit line 100 to show the function as x^x and run the program. It kicks back the correct answer for an area at 0.78343 ... which, by the way, can be proven, mathematically, to be equal to $1/1^1 - 1/2^2 + 1/3^3 - 1/4^4 + \dots$, oh the beautiful patterns that exist in math!

```

TI BASIC READY
>OLD "DSK1.FUNCAREA"
>EDIT 100
100 DEF FUNC(X)=X^X
>RUN
NUMBER OF SEPERATIONS FOR X
AXIS 500
LOWER LIMIT OF X AXIS 0
HIGHER LIMIT OF X AXIS 1
.7794415515
.7814355715
.7834335755
** DONE **

```

The FUNCLN program will calculate the length of the curve represented by a function. The formula is involved using both a derivative and integral, so this program does the calculation for you. As a test, if you edit line 100 to use a function of x from 0 to 1, you know the curve is a diagonal line which should equal 1.4142..., or the square root of 2. The program run confirms it!

```

TI BASIC READY
>OLD "DSK1.FUNCLN"
>EDIT 100
100 DEF FUNC(X)=X
>RUN
NUMBER OF SEPERATIONS FOR X
AXIS 100
LOWER LIMIT OF X AXIS 0
HIGHER LIMIT OF X AXIS 1
1.385929291
1.400071427
1.414213562
** DONE **

```

The POWER program allows for calculations of power roots. Regular calculators will give half roots and square roots where 8 is the half root of 16 since $8+8=16$ and 4 is the square root of 16 since $4*4=16$. Calculators don't go to the next step in operations, with powers (exponents). Therefore, using this program, the power root of 16 is 2.7453680... since $2.7453680...^2 = 16$. Some numbers have two power roots. For example, the two power roots of 0.90 are 0.0300653... and 0.8881353..., and the POWER program takes care of calculating it for you.

```

INPUT NUMBER 0.90
THERE ARE TWO POWER ROOTS
0 1
0 .9
.03 .89
.03 .889
.03 .8889
.03006 .88882
.030065 .888814
.0300653 .8888136
.03006533 .88881354
.030065336 .888813533
.0300653368 .8888135329
.03006533684 .88881353289
.03006533685 .88881353288
?

```

The GRAPH program was my first start at graphing a function to a computer screen. I didn't know at the time, that hand-held graphing calculators would come later to do the same thing. There is no longer a need to plot functions on graph paper, like in the old days before computers! I did more with a graph program later on a DOS based computer. However, this program could still be run, in a pinch, by adjusting number ranges and functions at the line numbers of the program. It defaults to the x^x function, obviously an interesting function to me throughout my life. Unlike, a DOS based program, the TI program will not bomb (cease running) if it doesn't like

TI Lives Continued

certain values (like x^x when x is negative). It just passes and moves on. The TI hand-held graphing calculator that came later carried on the same “pass but continue” trait.



After recently running and testing TI BASIC programs on the Classic99 TI

Emulator, I am reminded about how special the 1983 year was for me! It was when I bought my first home computer, the Texas Instruments TI-99/4A computer! I was younger, with so much more energy then, for I would write BASIC programs during the day at an insurance company on a Wang computer and write BASIC programs during the evening at home on the TI computer! I have written BASIC programs at many places of work for the rest of my life. I've had a TI computer for 38 years but it feels like yesterday at times! Happy Computing, as TI continues to live!



TI 99 is Now Available EVERYWHERE!

By Don Grim at Computer Users of Erie

I know there is a nice emulator of the TI-99/4A computer that runs on a Windows computer called Classic99, but what if I told you that you can run a TI 99 computer emulator on practically any computer, device, or phone? You do not have to install it. It is literally just a few clicks away!

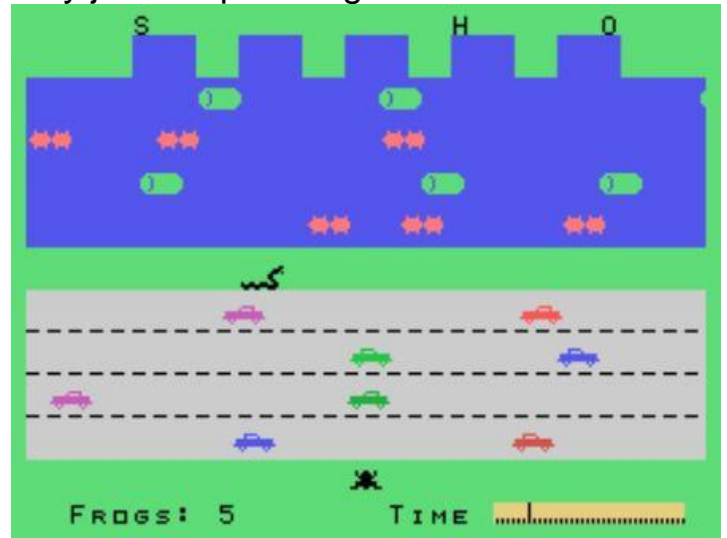
Before you say it is preposterous, think about what most electronic devices have in common today. The answer is web access! Programming on the web has come a long way. JavaScript is more powerful than HTML and TypeScript is more powerful than JavaScript, for providing programs that run on the web. You don't want to confuse JavaScript with Java. They are completely different animals. Java has had a history of difficulties, including bad updates. JavaScript and TypeScript have not had those difficulties.



JS99'er - TI-99/4A emulator

So, there is a TI 99 Emulator, written in TypeScript, that can be used by anyone who has a computer or device with web access. It is called "JS99'er – TI-99/4A emulator" and you can go to it at the web address of js99er.net. The "js" stands for JavaScript for JavaScript runs in TypeScript and JavaScript is a more familiar term. I will continue to look at Classic99 on a Windows computer, especially for writing or updating BASIC programs, and I like that Classic99 can be backed up. However, JS99'er is certainly handy to many devices including my favorite modern computer, my Chromebook!

JS99'er appears to have most programs and games that came on cartridges for the TI 99 computer. You just click the Software button at the bottom and choose from programs and games in each menu. The menu titles are Apps, Games, Demos, and More. There are a lot of additional apps, games, and demos in the More menu. So the More menu may be a folder where they just keep adding items.



The only missing program or game, that I have noticed, is a Frogger type of game called Frog Haven. So, I searched on the web for a ROM file of the game and found a file called FROGHAVEN32KB8.bin. I was able to run Frog Haven on the JS99'er emulator by clicking the Load Cart button at the bottom, going to where the FROGHAVEN32KB8.bin file is and clicking it to highlight it, and clicking Open. Perhaps that game will be added to the More menu later.



TI is Everywhere Continued

```
S U B M A R I N E   G A M E

CONGRATULATIONS! YOU HAVE
DARED TO PLAY THE SUBMARINE
GAME. YOU MUST KEEP THE
ENEMY SUBS AWAY FROM OUR
SHORE LINE. ALWAYS PRESS YOUR B KEY
TO FIRE. HOLD THE B KEY DOWN
UNTIL YOU HEAR A SOUND WHICH
LETS YOU KNOW THE BOMB IS ONLY
RELEASED. THE COMPUTER IS ONLY
ALLOWED 4 BOMBS ON THE SCREEN
AT ONE TIME. HIGHER AND LOWER
GOES TO SMALLER AND LOWER SCORE
SUBS ATTACKED IF YOU SCORE
200 POINTS AFTER 4 ROUNDS,
YOU GO TO BONUS ROUNDS WHERE
BONUS ROUNDS CONTINUE IF YOU
HAVE 50 POINTS PER ROUND. TO
QUIT AT ANY TIME, PRESS THE
FCTN AND 4 KEYS TOGETHER.
GOOD LUCK! ARE YOU READY? Y
```

And, yes, you can run BASIC programs on the JS99'er emulator. That means it is even easier to run my SUBGAME program on any device. You can try to bust my record on the game of 1562 points and 31 rounds! You can find my BASIC programs, that I wrote for the TI 99, at www.mathisapath.com/tiprograms.html. I will describe below how to run the SUBGAME on the JS99'er emulator. You would use similar instructions to run other BASIC programs. Click the Load Disk button at the bottom, go to where the SUBGAME file is and click it to highlight it, and click Open. Go to TI BASIC on the

menu (or TI EXTENDED BASIC if the program has speech). Type OLD DSK1.SUBGAME and then press the Enter key. Type RUN and then press the Enter key. You could exit the program at any time by pressing Alt 4 or you could just type js99er.net at the web browser address field to restart the emulator.

You can use your regular keyboard from your computer or device for JS99'er, or you can use an alternate keyboard provided by the emulator. You can access it by clicking the word Keyboard at the top right of the screen. That keyboard looks like the original TI 99 keyboard. The alternate keyboard can be handy if you are running JS99'er on a phone. When I wrote my ANSWERIT program that allows computer speech, I always thought I'd have a TI 99 computer next to a phone to answer a phone call with electronic speech statements. Now, decades later, I can run the ANSWERIT program on an actual phone! Who would have thought? I put a demo of the ANSWERIT program on youtube at <https://youtu.be/mUQ5gtgap4s> to hear the TI electronic speech.

```
ENTER LETTER (A-M)
A - I AM A COMPUTER
SAY WHAT YOU WANT TO START ..
HELLO
GOODBYE
DO NOT UNDERSTAND
WHAT WAS THAT
TRY AGAIN
THAT IS RIGHT
THAT IS INCORRECT
YOU ARE FINISHED NOW
```



TI is Everywhere Continued

After seeing how well JS99'er runs on the web, and after seeing how a Chromebook operates while using the web, I would not be surprised if all computers and software were web-based sometime in the future. Imagine no installing and compatibility everywhere!

The TI 99 sparked a new adventure in 1979 by being one of the first computers used at home. "99" is an adventure just like "49"! Back in 1849, there was the adventure of the California Gold Rush when many people rushed to discover gold, allowing California to grow into statehood. The San Francisco Forty Niners football team was named after the Gold Rush prospectors. The "Clementine" song from 1884 refers to a "forty-niner miner". The Huckleberry Hound cartoon used to sing the song, with a few comical sour notes! Many of the TI 99 Computer User Groups used to refer to themselves as "99'ers". The group in Erie PA was called the Erie 99er User Group. Some other groups were Kawartha 99ers in Peterborough Ontario, South West 99ers in Tucson AZ, Rocky Mountain 99ers in Aurora CO, New Hampshire 99ers in Merrimack NH, Greater Akron 99ers in Cuyahoga Falls OH, Lehigh 99ers in

Allentown PA, West Penn 99ers in Russellton PA, K-Town 99ers in Knoxville TN, Danubia 99ers in Vienna Austria, etc.

With the 49 and 99 spirit of adventure in mind, I wrote some TI 99 lyrics to go with the Clementine song melody. The TI 99 computer is something you can sing about!

99er!

Oh my T I, oh my T I
Oh my T I Ninety-Nine!
It was first and lives forever
At all places, all the time!

In a meeting, in a meeting
Where we share our many views
They call each group a 99er
And they find the latest news

49er! (Clementine)

Oh my darling, oh my darling
Oh my darling, Clementine
You were lost and gone forever
Dreadful sorrow, Clementine

In a cavern, in a cavern
Excavating for a mine
Dwelt a miner forty-niner
And his daughter, Clementine



Genealogy Report for 9/7/21 SIG Meeting

The September, 2021 meeting of the Genealogy SIG was held via Zoom on Tuesday September 7th. Sue Mueller called the meeting together at 7:05 with 14 in attendance.

Discussion was had about the changes in Ancestry's right to use family photos, stories and other information you have posted on their site. Basically, you may technically own the information but you can't do anything to stop Ancestry from using it anyway it wants. Forever. For more information, Sue suggested <https://www.legalgenealogist.com/2021/08/04/one-big-change-at-ancestry/>. This change took effect August 3, 2021.

Connie E. talked about creating an X-chromosome inheritance chart. The female and male inheritance charts and some good information about X-chromosomes can be found at <http://linealarboretum.blogspot.com/2012/11/phasing-x-chromosome.html>.

ESGR (Erie Society for Genealogical Research) will have a Brick Walls program at their October meeting. It is for members only and the information needed can be found on the members-only portion of their website. Your request has to be received by Sue Mueller by September 30, 2021.

Carl Z. has located and communicated with five cousins through DNA; all are from different branches of his family. One of these is a 2nd cousin 1x removed and she is also very involved in genealogy research. Carl traveled to Michigan to meet her and to share his information and was surprised how much she also had. She concentrates on the 1st generation of American-born family members and Carl focuses on the expansion of the family tree. They communicate weekly to exchange their findings.

Submitted by Connie Edwards

The Legal Genealogist

The Lineal Arboretum

Some Helpful Hints for Budding Genealogists from a Family Tree Surgeon

Geneabloggers



Phasing the X-Chromosome



Smartphone & Tablet Report for 9/27/21 SIG Meeting

On September 20, Apple released iOS 15 and iPadOS 15. These new operating systems build on the previous generation but contain hundreds of updates and changes. We have a lot of things to go over for the next few months.

We started discussing significant changes in iPadOS 15 but with the caveat that some of the new features only work on iPads with the A12 processor or newer. Download iPadOS 15 and see what works on your device. The A12 processor was released in the fall of 2018 but some iPad models sold then still used older processors.

Home Screen Widgets and the App Library introduced in iOS 14 on the iPhone have finally arrived on the iPad. Since 2015 Split Screen has been available for the iPad and it allows you to have two apps open on the screen of your device for multitasking. Perhaps you are like me and seldom used this powerful feature because the process of splitting the screen and adding a second app was clumsy. iPadOS fixes that. Open an app, tap on the three dots at the top of the screen, then open any other app that you want to share the screen and you will see both apps. I demonstrated how I use Pages to write an article while reading the material on the other screen. We also looked at Quick Notes, a means of attaching a note to an open page. Pull up from the lower right corner of the screen and enter text in your note either with your Apple Pencil or keyboard.

Live Text is a feature that recognizes text either in the viewfinder of the camera or in photos that you have taken. Google has

had this feature for some time. Tap on the small Live Text icon and you can choose part of, or all of, the text and then choose the option of translate, place a call, open a website, add a contact or copy the interpreted text. Options are context sensitive so that you won't have the option to translate a phone number or call a line of text. This feature definitely requires A12 or better processor power.

Safari has a number of changes not the least of which is relocating the address bar to the bottom of the screen. During beta testing, users complained so much about this change that Apple includes the ability to return the address bar to the top of the page if you wish. However, if the address bar is at the bottom of the page you can swipe right or left on the bar to look through your open tabs but that is not the case if the address bar is at the top of the page. There are various ways to see open tabs. Open Safari, turn the iPhone to landscape mode, scroll to the top of the page and the open tabs appear below the address bar just like with the iPad in either portrait or landscape modes. Tap the overlapping squares at the bottom right of the screen in portrait mode or the top right corner in landscape mode to access App Switcher and you will see it has a new grid layout. That's only the beginning of the new emphasis Apple is putting on tabs.

A curious new feature called Tab Groups allows you to collect similar or related tabs into a group without having the tabs active. This preserves resources in your device since usually every tab is active and accumulating a lot of tabs which loads down the device. I personally don't understand the value of tab groups since I

Smartphone & Tablet Report Continued

usually keep tabs to a minimum and use Bookmarks to record and return to pages. We challenged members of the SIG to try to explain the value of tabs and tab groups for the November meeting.

Two other Safari features are Pull to Refresh and Extensions. Instead of using the circular arrow in the address bar, you can refresh a web page by putting your finger on the page and pulling down. You will see the active circle near the top of the page until the refresh is complete. Most browsers have the capability to add features using extensions and Safari on mobile devices now adds the ability to add extensions from the App Store. Simply go to Settings/Safari/Extensions/More Extensions. There you will find free or paid extensions.

If you want to see the metadata for your photos, you no longer need a separate app like Investigator. Photos now has that capability built in. Open a photo and tap the circled “i” at the bottom of the page. If that information symbol has a star in the

circle you can use an additional feature called Visual Look Up. For example that picture of a rose will be identified as such. That picture of a landmark will be identified. Don't expect perfection as this capability will improve over time. If you choose a photo you have scanned, the date shown in the metadata will be the date of the scan. If you want to change that to the date the original photo was taken, tap Adjust to the right of the date and make the changes.

We showed some additional new features through the iPhone Life Insider Guide called “Master the Massive Updates to your iPhone”. These included iCloud Private Relay, Hide My email and the Weather app.

The next Virtual meeting of the Smartphone and Tablet SIG is scheduled for 7 PM on Monday, October 25, the usual fourth Monday of the month.

John Fair



A Note from the Editor

As usual, feel free to contribute information for the CUE newsletter. Whether it is small, large, an article, a tip, information, or pictures, you can send it to me and I will plan to include it in the newsletter. You can reach me at grimcyber@yahoo.com.

Remember that you can find recent news at the CUE website (cuerie.com). At times,

the website will have more recent news than the CUE newsletter since the website is updated continuously and the newsletter is updated monthly.

Stay Safe!

Editorially Speaking, Don Grim



Is it a TI 99 or is it Classic 99 or JS99'er? Maybe only your hairdresser knows for sure!

PLEASE PRINT

**COMPUTER USERS OF ERIE
MEMBERSHIP APPLICATION**

Today's Date _____

Last Name	First Name
Address	
City, State	Zip
Home Phone	Cell Phone
Your Email	

The yearly dues are payable in August of each year. The dues are \$24 annual.

For NEW members only, when you join outside the annual cycle your initial dues are based upon the month you join. Follow the schedule below.

August \$24	September \$22	October \$20	November \$18
December \$16	January \$14	February \$12	March \$10
April \$8	May \$6	June \$4	July \$2

Information provided on this form will be placed into a CUE Membership Directory

What is your Computer or Device: (Circle)

Windows Mac Android iPhone iPad
Tablet Linux Other

What is your level of expertise? (Circle)

Novice I know some I want to learn more
Expert Geek

Send your completed application
to:

Computer Users of Erie

PO BOX 8941

Erie, Pa 16505-0941

What do you wish to gain by joining Computer Users of Erie?

Student membership is just \$15 per year (provide proof of student status)

CUE Officer Information

Officers

President	Conrad Sobczak	hat sob@verizon.net	814-899-9699
Vice President	Paul Francis	pdf flyer@roadrunner.com	814-882-1175
Secretary	Susan Mueller	suepasta@roadrunner.com	814-622-1262
Treasurer	John Fair	johncfair@gmail.com	814-474-3055

At-Large Board

Janice Castro	jcastrocue@outlook.com	312-543-9128
Don Grim	grimcyber@yahoo.com	814-461-8289
Marcia Keller	dekmak43@gmail.com	814-449-4682
Hal Kelley	hal_kelley@outlook.com	814-836-1803
Suzanne Matthews	pdxmatthews@aol.com	814-790-4185

Alternate At-Large Board

Lou Cioccio	lcioccio@mac.com	814-868-1320
-------------	--	--------------

Special Interest Groups

Beginner's (BUG)	Lou Cioccio	lcioccio@mac.com	814-868-1320
Digital Photo	Lou Cioccio	lcioccio@mac.com	814-868-1320
Genealogy	Susan Mueller	suepasta@roadrunner.com	814-622-1262
MAC	Lou Cioccio	lcioccio@mac.com	814-868-1320
Smartphone & Tablet	John Fair	johncfair@gmail.com	814-474-3055
Windows	Lou Cioccio	lcioccio@mac.com	814-868-1320

Other Resources:

CUE Historian	Tom Kuklinski	tkuklinski@gmail.com	814-746-9165
DOS Information	Don Grim	grimcyber@yahoo.com	814-461-8289
Editor	Don Grim	grimcyber@yahoo.com	814-461-8289
Membership Chair	John Fair	johncfair@gmail.com	814-474-3055
Webmaster	Tom Kuklinski	tkuklinski@gmail.com	814-746-9165

CUE Disclaimer

The Computer Users of Erie (CUE), a nonprofit affiliate of APCUG, is not connected with, nor does it represent the interests of such organizations as IBM, Apple, Texas Instruments, Microsoft, or any other manufacturer or vendor, nor can it assume responsibility for the accuracy or misrepresentation of materials or statements found in advertisements, articles, announcements, or presentations appearing in its newsletter or at CUE sponsored meetings. The members of the CUE Board of Directors, committees, and SIGs are volunteers giving of their time and energy to assist CUE members through education. CUE shall not be held liable in name or performance for the outcome of activities or agreements to provide services offered by any person in the name of CUE. CUE welcomes comments, letters, original articles and programs for its newsletter. Such materials may be submitted to: CUE Editor, P.O. Box 8941, Erie, PA, 16505-0941. Also you can email grimcyber@yahoo.com. Permission is hereby granted to other nonprofit computer user groups to reprint articles appearing herein, unless specifically restricted, provided credit is given to both its author, if known, and its original source.

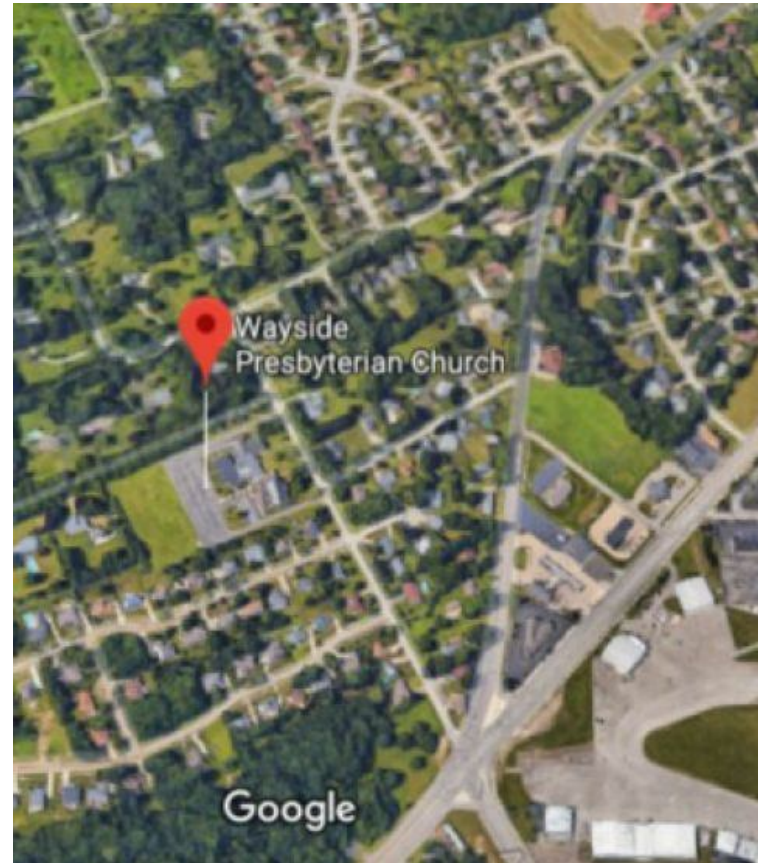
Directions to Wayside Presbyterian Church for CUE Meetings

Wayside Presbyterian Church, at 1208 Asbury Road, is approximately three blocks north of the intersection of Asbury Road and Route 5. This intersection is at the northwest corner of the Erie International Airport property. Following Asbury, turn left at the first marked driveway for the church. During the afternoon winter schedule (10:00 AM for the months of November, January, February and March), entry is through the two sets of blue double doors. Use the buzzer to gain entry if the doors are locked. During the normal evening schedule (7:00 PM the remaining months) use the double doors on the south side of the Christian Education wing. Signs are posted in the building to direct you to the meeting room.

From West of Erie International Airport: Follow Route 5 to the intersection of Asbury and Route 5. Turn hard left onto Asbury Road. Look for the church on the left approximately 3 blocks north of the intersection.

From South of Erie: Take Interstate 79 north to the 26th Street (Route 20) Exit. Bear left onto 26th Street (Route 20) west. Follow Route 20 about 3.4 miles west to Asbury Road. Turn right (at the Sheetz Gas Station) onto Asbury and follow it straight across Route 5. Look for the church on the left approximately 3 blocks north of the intersection.

From East of Erie International Airport: Follow 26th Street (Route 20) west to Asbury Road. Turn right onto Asbury and follow it straight across Route 5. Look for the church on the left approximately 3 blocks north of the intersection. OR, follow 12th Street (Route 5) west past the airport to Asbury Road. Turn right onto Asbury Road. Look for the church on the left approximately 3 blocks north of the intersection.



About the Newsletter

The CUE Newsletter is published monthly by the Computer Users of Erie (CUE), an independent nonprofit computer user group, dedicated to the education and support of our members. The opinions expressed herein are those of the individual authors or the editor, and do not necessarily reflect the opinions of CUE. This publication is Copyright © 2018 by the Computer Users of Erie. All rights reserved. Permission to reprint is hereby granted to any Nonprofit Organization, as long as proper credit is given, or not restricted by the original author or source. **Advertising:** Advertising is welcome from both our members and commercial sources. For current advertising rates, please send an email to the Editor requesting a copy of the Ad Rates file. **Address Changes:** Any recipient of the newsletter is urged to submit a change of address notification to the Editor, either via US Mail to the address shown below, or (preferably) via email, so we may keep our records accurate. **Newsletter Exchange:** CUE welcomes newsletters from other user groups. If you would like to exchange newsletters, either by US Mail or via electronic (Internet) delivery, please send your newsletter to the address listed below. We will add your name to our mailing list and send you our newsletter in return. **Submissions:** Submissions are always welcome from our members or outside sources. Submissions may be articles, images, cartoons, etc. For first time authors, please request a copy of our Submissions Guidelines from the Editor, prior to submitting any items. This will help to eliminate publication delays. Submissions are due by the 5th of each month. **Correspondence:** General correspondence to CUE may be sent via US Mail to: Computer Users of Erie, PO Box 8941, Erie, PA 16505-0941 USA. Email to: cuerie@gmail.com. Editor Email to: grimcyber@yahoo.com.

CUE Membership Benefits



As the largest computer users group in northwest Pennsylvania, CUE has served Erie and surrounding communities since 1982. CUE provides a forum for people to learn about computers and have fun doing so. The group meets the third Thursday each month, with the exception of the months of July and December. In July the group gathers for a picnic and December is the annual holiday party (dates vary). CUE meetings are at Wayside Presbyterian Church, 1205 Asbury Road, Erie. Meetings from April through October are at 7:00 p.m. From November through March, the meetings are at 10:00 AM in the morning, except it will stay at 7:00 p.m. during the Caronavirus Pandemic.

Our monthly meetings are open to the public regardless of age or ability. Many of our members are senior citizens who span a wide range of capabilities and interests but share a desire to know more about how to use computer related technology. Our role is to provide a forum for continuous learning from each other. CUE has a closed Google gmail group that is used to communicate with members and to post questions/problems to seek answers from the membership. Members pay an annual membership fee of \$24 to receive a membership directory, monthly newsletter, availability to monthly general meetings, and any of the Special Interest Group (SIGs) meetings, usually held in a member's home. Locations and times vary, so check the online EVENTS Calendar on the website for the latest information. SIG topics include:

- Digital photography [and photo safari]
- Genealogy
- Macintosh computers
- Computer troubleshooting
- Beginners users group (BUG)
- Handheld smartphones and tablets

CUE is a member of the Association of Personal Computer User Groups (APCUG). APCUG is an International, platform-independent, volunteer-run, non-profit organization devoted to helping member User Groups offer enhanced services to their members. Some of the membership benefits include:

- Speakers bureau
- Free virtual technology conferences
- Regional conference
- Push newsletter articles
- Discounts and special offers from vendors
- User group newsletters online

Find us online at <http://www.cuerie.com/>. And Facebook @cuerie

Computer Users of Erie
PO Box 8941
Erie, PA 16505-0941

Postmaster:
Address Service Requested



Address label here