

COMPUTER USERS OF ERIE

CELEBRATING 37 YEARS SERVING NW PENNSYLVANIA *First Programed in 1982*

COMPUTER USERS OF ERIE

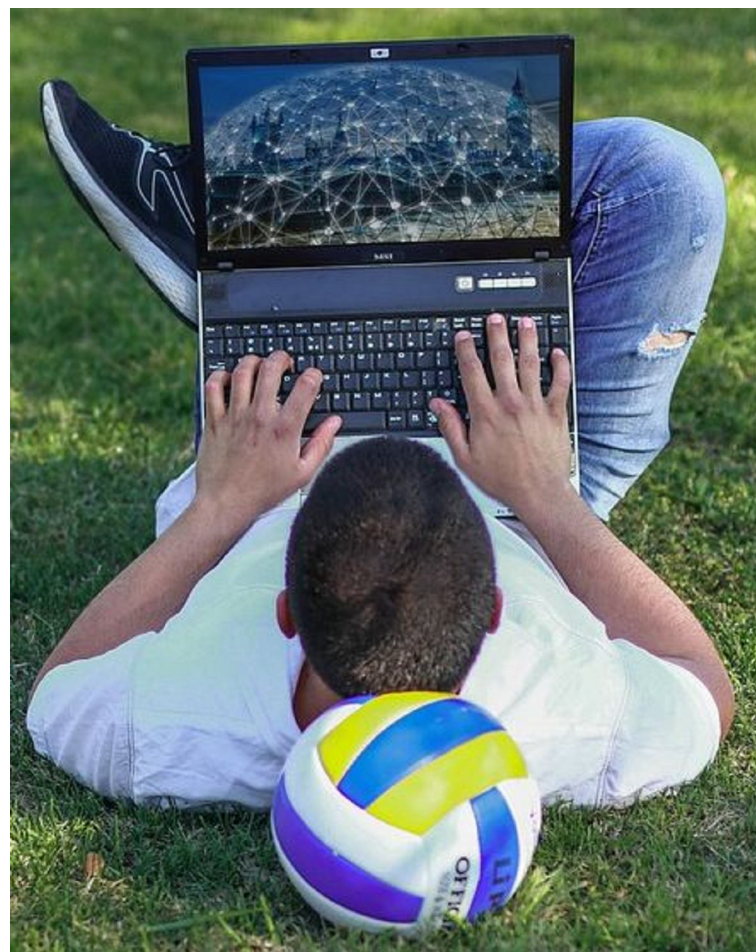
CELEBRATING 37 YEARS SERVING NW PENNSYLVANIA *First Programed in 1982*

CUE Newsletter – August 2020 (Volume 37 Number 8)



August CUE Meeting

The next CUE members' meeting is on Thursday August 20th at 7:00 PM. No special details are available yet for the meeting. Look for details to be announced at the CUE website.



Visit the CUE
Website at:

www.cuerie.com

CUE is a member of APCUG



**An International
Association of Technology
& Computer User Groups**

CUE Calendar



Calendar events are subject to change. SIG stands for Special Interest Group.
(look for notices outside of the newsletter for delays or special news on meetings)

CUE Membership Meetings (typically 3rd Thursday of each month)
Thursday August 20th at 7 PM
Thursday September 17th at 7 PM

Beginner's User Group (BUG) SIG Meetings
To Be Scheduled Upon Request

Digital Photo SIG Meetings (typically 1st Saturday of each month except June/July/August)
Saturday September 5th at 9:30 AM
Saturday October 3rd at 9:30 AM

Genealogy SIG Meetings (typically 1st Tuesday of each month)
Tuesday August 4th at 7 PM
Tuesday September 1st at 7 PM

MAC SIG Meetings (typically 2nd Saturday of each month except June/July/August)
Saturday September 12th at 9:30 AM
Saturday October 10th at 9:30 AM

Smartphone & Tablet SIG Meetings (typically 4th Monday of each month) (RSVP John Fair)
Monday August 24th at 7 PM
Monday September 28th at 7 PM

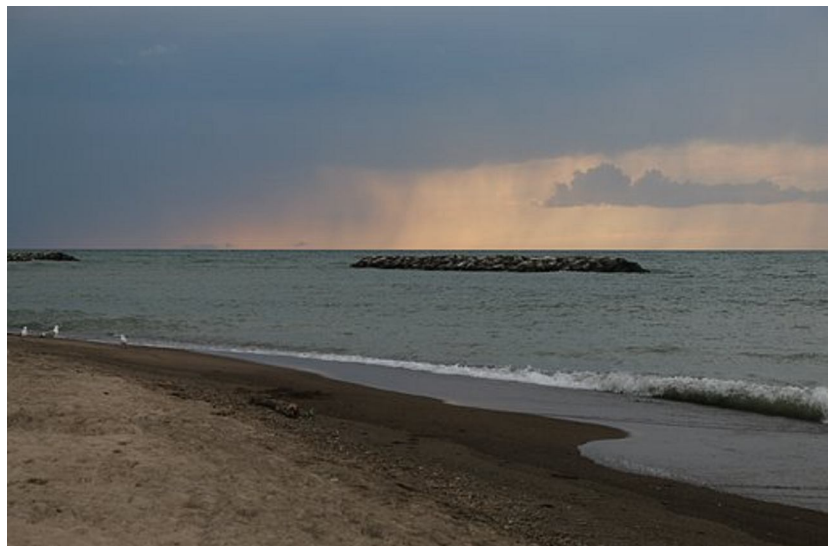
Windows SIG Meetings (typically 2nd Saturday of each month except June/July/August)
Saturday September 12th at 1 PM
Saturday October 10th at 1 PM

CUE Picnic
Thursday September 10th at 6 PM (tentative)

CUE Christmas/Holiday Party
Wednesday December 9th at 6 PM

Save That Date! Thursday September 10th 2020

The Erie Runner's Club pavilion at beach #1 is tentatively reserved for the CUE Picnic!
Try to keep that date open for a possible time of food and fellowship!



Ports and Cables from John Fair

The CUE meeting on 7/16/20 had a presentation by John Fair on Ports and Cables. You can find John's presentation slides at the CUE Website (www.cuerie.com). The Ports and Cables slides has 25 pages of information, included some links to related YouTube videos. It will be helpful in case you missed the meeting, or if you want to review the information.



Ports and Cables

(Not the nautical kind!)



July, 2020 Monthly Meeting
Computer Users of Erie
Zoom Meeting — Thursday 7/16

John C. Fair

Visit from Our Neighbors!

We had a visit from some technological neighbors south of Erie (Pittsburgh area) at our CUE Zoom Meeting on 7/16/20. Mike Ceschini, John Cornwell, Ron Kazor, Jon Mazur, and someone named "CUser Group" from the CUser Group (www.cpusergroup.org) in Tarentum PA, were virtual Zoom guests at the CUE Meeting. It was nice to hear their insights and "compare notes" between their group and our group. Here are some links that they provided at the meeting:

A link to the Raspberry Pi computer: www.raspberrypi.org

John Cornwell's social media links: www.linkedin.com/in/cornwelljohn
www.facebook.com/johncornwell

Computer recycling company that repairs donated computers: www.computerreach.org

Adding WiFi AC and Bluetooth 4.0 on a 2010 Mac Pro

By Lou Cioccio at Computer Users of Erie

It is one of the best built and highly configurable Towers that Apple produced. I now have Airdrop and Handoff capable for this 2010 Mac Pro. Below is what System Profiler says about the WiFi and Bluetooth.

Software Versions:

CoreWLAN: 13.0 (1375.2)
CoreWLANKit: 13.0 (1375.2)
Menu Extra: 13.0 (1380.2)
System Information: 12.0 (1300.2)
IO80211 Family: 12.0 (1200.12.2)
Diagnostics: 1.0 (805)
AirPort Utility: 6.3.9 (639.9)
Interfaces:
en3:
Card Type: AirPort Extreme
(0x14E4, 0x111)
Firmware Version: Broadcom
BCM43xx 1.0 (7.77.61.3)
AirPortDriverBrcmNIC-1305.10)
MAC Address: b8:09:8a:43:fe:de
Locale: ETSI
Country Code: X3
Supported Channels: 1, 2, 3, 4, 5, 6, 7, 8,
9, 10, 11, 12, 13, 36, 40, 44, 48, 52, 56,
60, 64, 100, 104, 108, 112, 116, 120,
124, 128, 132, 136, 140, 149, 153, 157,
161
Wake On Wireless: Supported
AirDrop: Supported
AirDrop Channel: 0
Auto Unlock: Supported
Status: Off

Apple Bluetooth Software Version:
6.0.14d11

Hardware, Features, and Settings:
Name: louie's mac pro
Address: 88-63-DF-8A-45-5C
Bluetooth Low Energy Supported: Yes
Handoff Supported: Yes

Instant Hot Spot Supported: Yes
Manufacturer: Broadcom
Transport: USB
Chipset: 20702B0
Firmware Version: v150 c9317
Bluetooth Power: On
Discoverable: Off
Connectable: No
Auto Seek Pointing: On
Remote wake: On
Vendor ID: 0x05AC
Product ID: 0x828D
HCI Version: 4.0 (0x6)
HCI Revision: 0x2465
LMP Version: 4.0 (0x6)
LMP Subversion: 0x4196
Device Type (Major): Computer
Device Type (Complete): Mac Desktop
Composite Class Of Device: 0x380104
Device Class (Major): 0x01
Device Class (Minor): 0x01
Service Class: 0x1C0
Auto Seek Keyboard: On
Services:
Bluetooth File Transfer:
Folder other devices can browse: ~/Public
When receiving items:
Accept all without warning
State: Disabled
Bluetooth File Exchange:
Folder for accepted items: ~/Downloads
When other items are accepted:
Save to location
When receiving items:
Accept all without warning
State: Disabled
Bluetooth Internet Sharing:
State: Disabled
Incoming Serial Ports:
Bluetooth-Incoming-Port:
RFCOMM Channel: 3
Requires Authentication: No

Adding WiFi and Bluetooth Continued



The cost of the above adapter was under \$13. Below is the combination WiFi AC and Bluetooth 4.0. The 10 year old Mac Pro I bought did have Bluetooth but version 2.0 and no WiFi, and the cost was under \$38. To complete this upgrade I had to figure out how to power the Bluetooth part of the card. The Mac Pro is unlike most PC Motherboards as you can easily access 5vdc either off a spare card or even on the motherboard. If you look at the above image on the adapter card you will see two wires. One has a black plug and the other has two soldered wires. That black plug is common on PC's but not on the Mac Pro as its propriety and is one of the reasons I keep bits and pieces of dead mac parts. In fact I kept the faulty center blower of a 2010 27" iMac for whatever reason and now it was the 4 pin connector on the original Bluetooth 2.0 card I removed. All I had to do was determine which was 5VDC and solder the red and black wires to the adapter.



Adding WiFi and Bluetooth Continued

3/4" x 1/2" and use Gorilla Glue on the cable; wait 24 hours for the glue to cure. Now I had something to hold on while I made the connection.

I did have to look for info on the web to figure out the wiring and was able to find this site:

<https://www.osxwifi.com/product/mac-pro-2009-41-and-mac-pro-2010-2012-51-apple-broadcom-bcm94360cd-802-11-a-b-g-n-ac-with-bluetooth-4-0/>

But not at the price they are asking albeit the WiFi card does not have to be turned around.

I realize the Intel Mac's are destined to obsolescence just as Apple abandoned the Motorola 68000 CPU to the Motorola PowerPC and then to the Intel CPU. Yes I can upgrade this CPU from the 2.8 GHz Quad-Core Intel Xeon for an Intel(r) Xeon(r) Processor X5690 12M Cache, 3.46 GHz, 6.40 GT/s Intel(r) QPI which is a 6 core processor for around \$100.

I have two bootable drives, High Sierra and Mojave. While I was upgrading the OS I hit on some firmware which will allow booting off NVME express cards by adding a PCIe card in the Mac Pro.

Here is an image of the Mac Pro open. You can see where hard drives can be pulled out. There are four pull outs. I did replace the Video card with a Metal compatible that give me the boot screen.

My Mac Pro 2006 did not have one so I would have to wait on the logon screen.



The cost for that Video Card with Mac Bios was \$180. I bought a 10 year old Mac on Ebay with a bid of \$295, Video Card for \$180, wifiAC Bluetooth 4.0 for \$52. Even though its old it still performs. My next project will be removing the heat sinks, cleaning the 10 year old paste and putting in new paste, and maybe that CPU I mentioned earlier.

Can I upgrade to Catalina? It's a yes or no as you will have to defeat the non supported Mac Computers when installing and at anytime, a major system update comes along. You can use DosDude1 hacks to overcome this. I decided not to do neither as I have some legacy programs that I want to keep running without the renters fee and updating a machine. I am RETIRED!

Nimrod's Message

By Cat Mews (AKA John Driscoll's cat)
at Central New York Technology User Group (www.cnypcug.org)



Oh, now he tells me cats don't get COVID-19! Do you know how hard it is to get a mask that fits me? And this "paw" washing ... you know, cats don't like water anyway. And, guess what? How do you think they take a cat's temperature? It was bad enough using John's thermometer.

Can't say too much more though. I do get fed regularly and the stores don't seem to have a "run" on "Sheba" kitty delight cat treats. Oh yea, kitties don't use litter box "paper" either.

I have to say one thing. Sometimes it's nice to just cuddle up and take advantage of the amount of heat our humans radiate.

And, you know, things get cleaned up a lot more. John's been down in the basement quite often doing loads of wash.

I even get to go out on the porch once in a while. Not too far from the sliding glass door though, remember to stay between the human and the door. Don't want to get locked out by accident. I hear it's pretty tough in the wild.



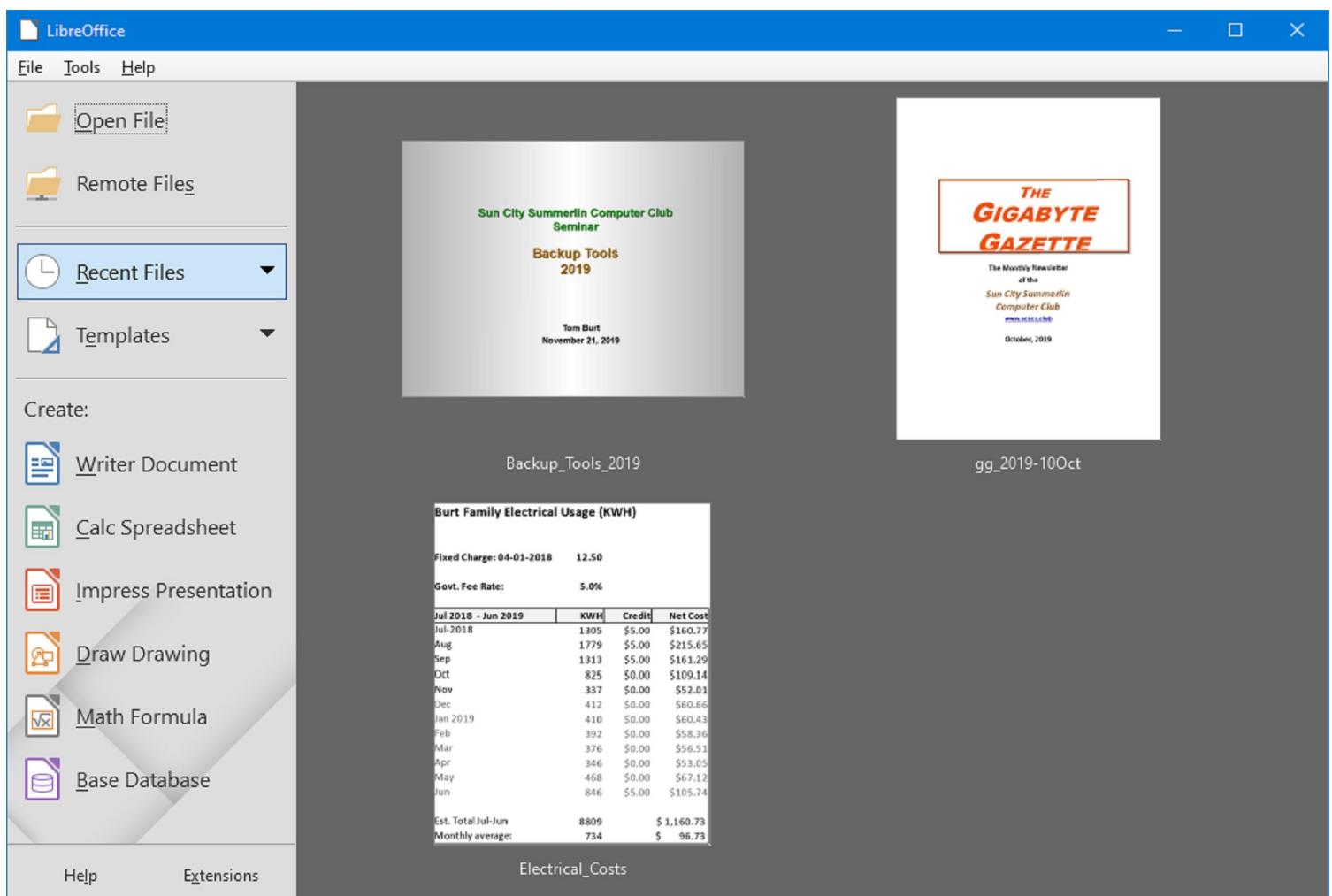
LibreOffice – A Powerful, Free Office Suite

By Tom Burt at Sun City Summerlin Computer Club, NV (www.scscclb.com)

About every 18 months I teach an introductory seminar on how to use LibreOffice. Attendance is usually good, but I still only am reaching about 20 of our members at any one time. So, I decided this month to write about it here. Also, I had a recent question about “deals” for Microsoft Office 2019 Professional being offered online for prices like \$49.99. These offers are very dubious. I suggested the questioner consider LibreOffice as a legitimate alternative.

LibreOffice is a free full-featured open-source office suite that is very highly compatible with Microsoft Office. LibreOffice is offered and supported by the Open Document Foundation. The latest version is 6.3.3. You can download it at www.libreoffice.org. There are versions for Windows, Mac, and Linux. LibreOffice can open and save documents in Microsoft Office format or in its native (.odf) formats.

LibreOffice Home Screen:



LibreOffice Continued

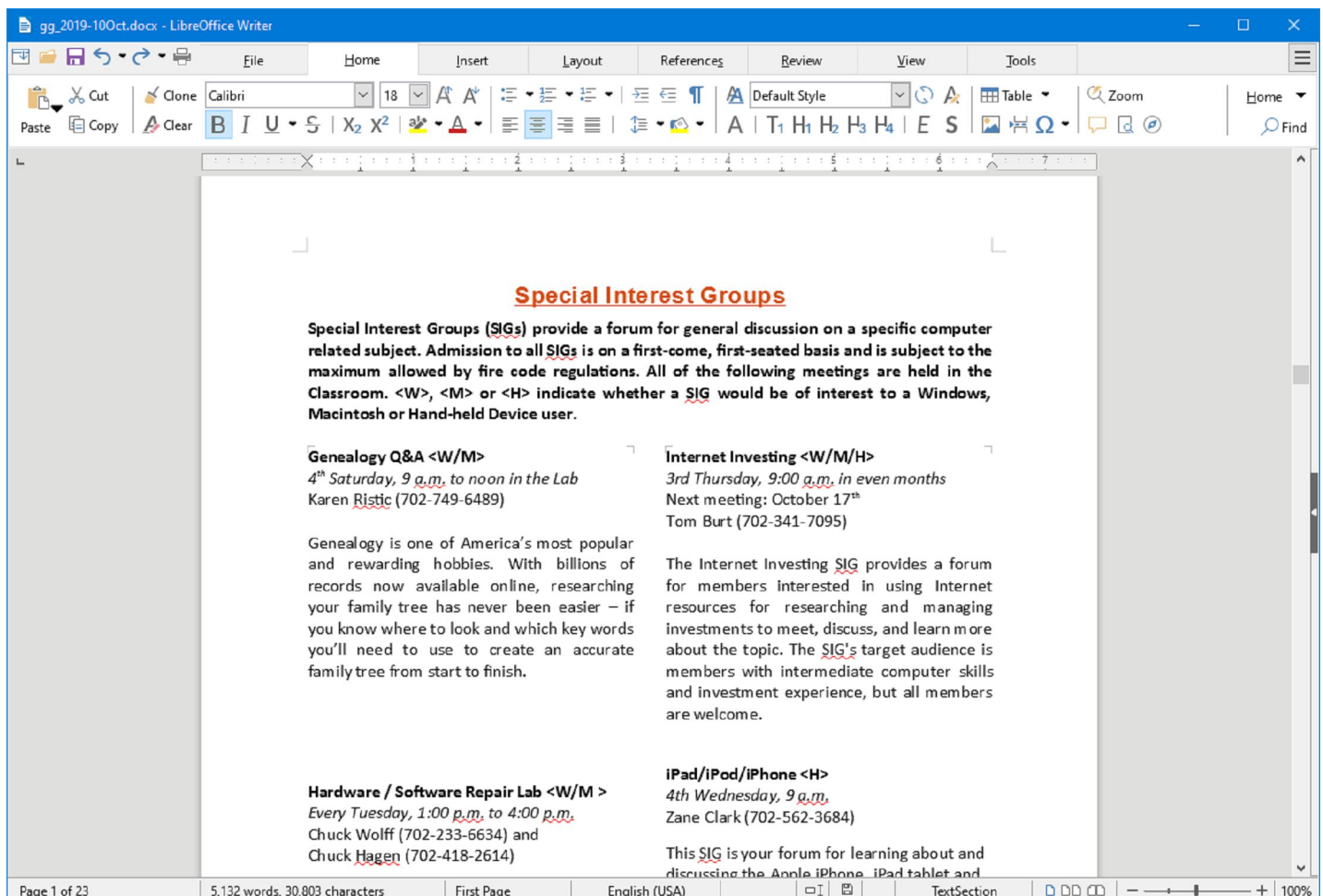
The LibreOffice home screen displays thumbnails of recently used documents. You can reopen one by simply clicking on it. You can also click in the Create section to create a new document.

The LibreOffice suite includes six components:

- **Writer** word processor, compatible with Microsoft Word
- **Calc** spreadsheet tool, compatible with Microsoft Excel

- **Impress** presentation graphics, compatible with Microsoft PowerPoint
- **Draw** diagramming and drawing tool, compatible with Microsoft Visio
- **Math**, a tool for laying out complex mathematical formulas and expressions
- **Base**, a database tool for creating and interfacing to relational databases

Space limits here preclude my covering all of the components. Let's look at Writer to get a sense of how LibreOffice looks and feels:



LibreOffice Continued

LibreOffice Writer Using the New Tabbed Interface - Beginning with release 6.3.3, LibreOffice offers a choice of several user interfaces, including a ribbon-style tabbed interface similar to that in Microsoft Office 2007-2019. Also available is a “classical” menus and toolbar interface, similar to that in Microsoft Office 2003. Shown in the screenshot is part of the SIGs page of the Computer Club’s monthly Gigabyte Gazette newsletter. I opened this document, which I usually edit with MS

Word 365 (2019) and almost everything came in fine (styles, graphics, tables, etc.). The only flaw I saw was that my running footers stopped showing after the 5th page. This was caused by an embedded Section break to a new page. Happily, I was able to easily fix this in Calc by copying the footer from page 4 to page 5.

Let’s look at a screenshot from the Calc spreadsheet:

	A	B	C	D	E	F	G	H	I	J	K	L	M	N	O
1	Burt Family Electrical Usage (KWH)														
2						Rate: 10-01-2018	0.10989								
3						Rate: 08-01-2018	0.11110								
4	Fixed Charge: 04-01-2018	12.50				Rate: 04-01-2018	0.11140								
5															
6	Govt. Fee Rate:	5.0%													
7															
8	Jul 2018 - Jun 2019	KWH	Credit	Net Cost											
9	Jul-2018	1305	\$5.00	\$160.77											
10	Aug	1779	\$5.00	\$215.65											
11	Sep	1313	\$5.00	\$161.29											
12	Oct	825	\$0.00	\$109.14											
13	Nov	337	\$0.00	\$52.01											
14	Dec	412	\$0.00	\$60.66											
15	Jan 2019	410	\$0.00	\$60.43											
16	Feb	392	\$0.00	\$58.36											
17	Mar	376	\$0.00	\$56.51											
18	Apr	346	\$0.00	\$53.05											
19	May	468	\$0.00	\$67.12											
20	Jun	846	\$5.00	\$105.74											
21															
22	Est. Total Jul-Jun	8809		\$1,160.73											
23	Monthly average:	734		\$ 96.73											
24															
25															

LibreOffice Calc Spreadsheet Using the New Tabbed Interface - This is a fairly simple Excel spreadsheet I use to track my monthly electrical costs. It has multiple

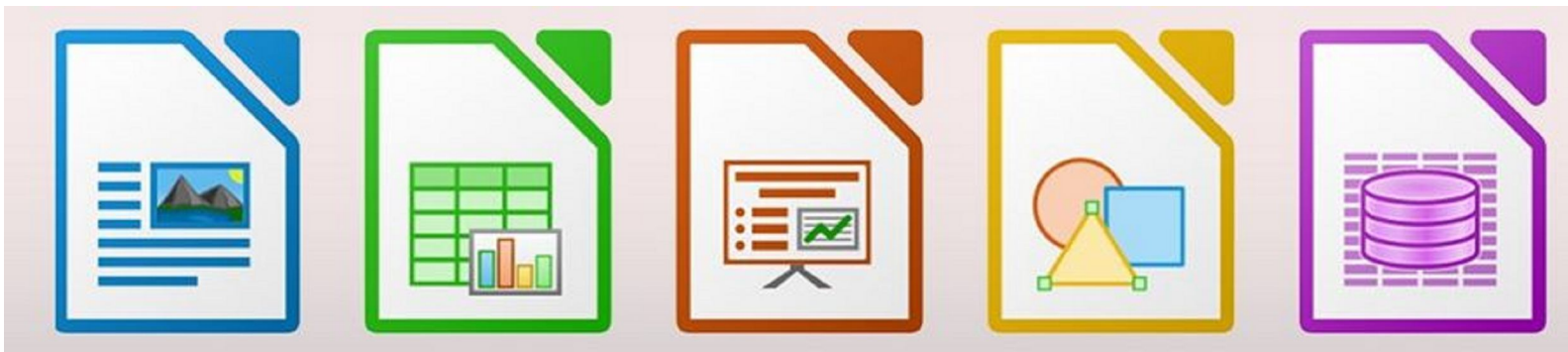
worksheets in a single workbook. I opened it with Calc and everything came in fine. This sheet only has formulas; no macros.

LibreOffice Continued

In summary, if you're looking for a powerful, free office suite with very high compatibility to MS Office, LibreOffice 6.3 would be an excellent choice. However, after opening a Microsoft Office document in LibreOffice, it's wise to scan through and make sure everything looks right.

Finally, if you see a "too good to be true" offer for Microsoft Office Professional on the web, it almost certainly is. Many of these are selling Enterprise product keys

and downloadable media as a retail product, in violation of the Enterprise licenses. Microsoft can kill these product keys at any time and the buyer has no recourse. So, Buyer Beware!



Genealogy Research Online

By Frank Fota at Fredericksburg PCUG, MD (www.fpcug.org)

Well, the Coronavirus has us isolated at home instead of at work. Some people, so I've heard, are tackling tasks they've deferred for the proverbial "rainy day." I've often said to myself that I would scan that box of photos I rescued from my departed uncle's home before its contents were sold at an estate sale. I intend to distribute the images to my relatives. The issue is ... identifying the people in the photos. Genealogical research can be a tedious task. Just such a task for a time like this. If you are interested in creating a family tree, or simply learning more about your ancestors, there are many websites where you can conduct genealogical research. Some of these websites are interactive and allow you to share photos and communicate with distant relatives. Bob Rankin at AskBobRankin.com provides a list of useful sites for Genealogical research:

1. Ancestry.com – perhaps the best-known website for genealogical research. It is a subscription-based service that costs \$199/year or \$99 for six months. A 14-day trial will allow you to evaluate the service. For an additional fee, the "World Explorer" package adds the ability to search internationally.

2. Cyndi's List (www.cyndislist.com) – is a free categorized & cross-referenced index to genealogical resources on the Internet. Over 335,000 genealogical sites are linked from this website.

3. Family Search (www.familysearch.org) – is run by the LDS Church. It provides access to over a billion records worldwide at no cost. The LDS Church also provides

personal assistance and access to some of the paid sites via local family history centers. A local family history center is located at 20 Boscobel Rd Fredericksburg, VA 22405 (540) 361-7494.

4. Roots Web (www.rootsweb.com) – is the oldest and perhaps the largest genealogy site on the internet. The Roots Web site has genealogy search engines and message boards where you can obtain help from budding but more experienced genealogists.

5. USGenWeb (www.usgenweb.org) – provides lists of genealogy resources by state and county.

6. WorldGenWeb (www.worldgenweb.org) – is similar to USGenWeb. Bob Rankin says, "WorldGenWeb is a nonprofit volunteer organization that is dedicated to the free use and access of public domain genealogical information."

Mr. Rankin notes several other websites and the resources that are provided in the article linked above (i.e., at AskBobRankin.com). He also provides links to genealogy software.



Genealogy Report for 7/7/20 SIG Meeting

Due to the continued closer of the Millcreek Library the Genealogy SIG meeting was held via Zoom. Meeting started at 7:00 pm, with 13 members attending.

At tonight's genealogy SIG meeting Connie Edwards talked about her experience attending the Genealogical Research Institute of Pittsburgh's week-long DNA session. She had been scheduled to attend in person, but plans changed with the coronavirus. This year's session was via Zoom.

The 2021 schedule has been released if you're thinking of attending next year.

<https://www.gripitt.org/future-courses/>

While they are not doing registrations yet, Connie said that the classes fill up VERY quickly, so get on their mailing list if you have an interest in attending next year.

Notes per Sue Mueller:

Connie talked a bit about the sessions. There were 40 in a class. Class went from 9:30 - 4:30 with two 15 min breaks and a lunch break. Each night there was homework and they had different topics discussed nightly that you could attend.

She expressed how amazing it was. A few topics that were discussed were items like DNA painter, shared matches, etc.

Carl Zalewski talked about the CYS Cemetery off of Route 8. He met with John who knew everything about the cemetery, and learned a lot. It was discussed that possibly he would like to talk at a "Erie Historical Society Meeting". Some of the many things that were discussed were the numbers on the stone and how it makes it easier to find your loved one.

Liz Wisniewski wondered if it were possible to merge trees that she had on [Ancestry.com](https://www.ancestry.com). She was advised to call Ancestry to see if they could assist her.

It was discussed on the importance of backing up your information. Bill Klauk reported that it's going to cost him \$2,000.00 to have stuff recovered from his computer. Also, that USB backups are not reliable. The more you erase and use a USB for information the less reliable they become.

Until our next meeting EVERYONE stay safe and practice social distancing.

Robin Boyd



Smartphone & Tablet Report for 7/27/20 SIG Meeting

The SIG meeting was held over Zoom Video Conferencing at 7:00 PM on the customary fourth Monday of the month.

After inviting questions for the session, we reviewed an agenda for the meeting.

Apple updated the operating systems of both the iPhone and iPad and we used a selected video to highlight the changes contained in iOS 13.6. One of our newer members had asked for help in identifying the best word processing program to use on his new iPad. We demonstrated Pages, Word and Google Docs to highlight features of the top three apps for iOS device word processing. Finally, we reviewed features of Messages using four videos from one of the Guides in iPhone Life Insider, a subscription service.

We used a 12 minute YouTube video "iOS 13.6 is Out! - What's New?" to review new features in iOS 13.6. Changes include separate toggles to download and to install iOS Updates. I like this idea of splitting the update steps since downloading takes some time, but I want to choose when to install the update. I always like to read reports of problems with the update before I commit. I also liked "Symptoms" added to the Browse tab in the Health app. It helps you track the time of occurrence and severity for a long list of possible symptoms so you can relay them to your doctor. That's handy for those of us whose memory isn't what it once was. Apple News+, the paid version of Apple News, now has a narration feature. Finally, if you have a new car that is compatible, you can use your iPhone to lock, unlock and start your car, share your digital keys and more. So have fun with this feature on your new BMW

(manufactured after July 1, 2020). If you don't have a new Beamer, other brands should offer Car Key compatibility in the future.

Pages, Apple's free word processing app, is the best of the three we discussed. It combines features of word processing and publishing apps. Opening the app you see a minimalistic set of controls that are designed for the smaller screen of mobile devices. We used the demonstration to show the functions of the control symbols. Once you see the capabilities of the app, you can play with it to locate the functions you want that you forgot where to find. The paint brush icon is different in that it is context sensitive: one set of options appear with text and another with images. "More" (three dots in a circle) gives all sorts of options including export which allows saving as PDF or .docx files. Insert a picture or one of a large variety of available images and you can move them around with your finger and watch as the words wrap around them. You could easily publish a multi column newsletter with this app.

Microsoft Word is an app available free for the iPad as long as your screen is 10.1 inches or less. Many iPads had a 9.7 inch screen. If your iPad screen is larger, you have to subscribe to the paid version of Office 365. The layout of the Word app reminds one of the recent versions of Word for Windows with multiple tabs that let you select the format, insert, draw, layout, review, and view which opens up different options for each tab. Saving the document requires you to have a Microsoft account. "More" (three dots) lets you export in open document format or PDF.

Smartphone & Tablet Report Continued

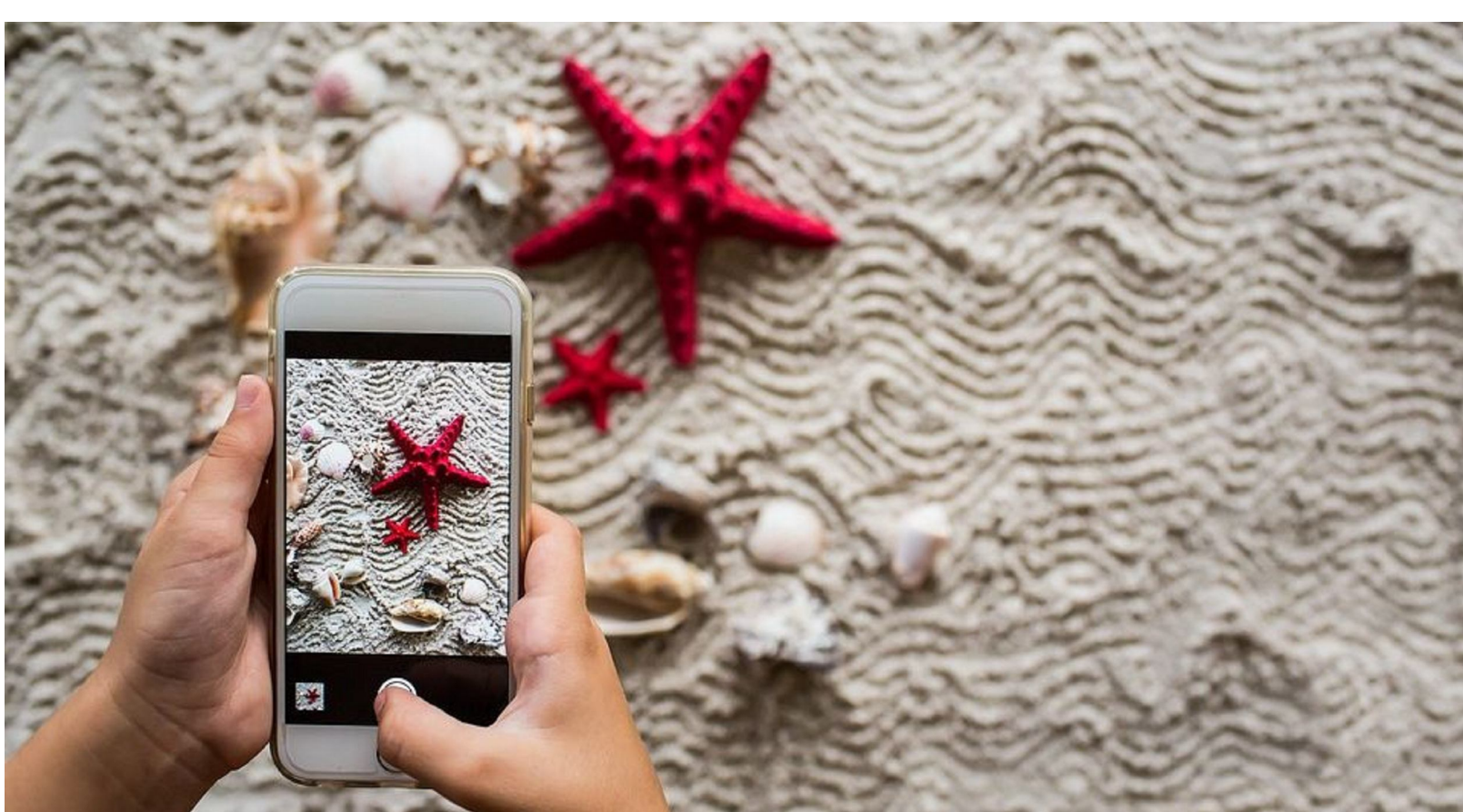
Words will wrap around inserted pictures and images in ways that you select. Word for iPad is a fine, traditional word processor with easy to locate functions if you don't want to go through the process of learning something different with Pages (and your iPad screen is 10.1 inches or less).

Google Docs can be used to write, edit, share and collaborate on any device and it is completely free. You can access Docs in Drive using your Google account. However, download Docs as an app and you can use it offline and documents will sync to the cloud when you next connect to the internet. Just as Pages, Docs allows you to work with Word files and save as

PDF or .docx files. All the standard features of a modern word processor are easy to access because the layout is similar to traditional word processing programs. However, both Pages and Word are more feature rich.

Four videos from the iPhone Life Insider Guide on Messages brought us to 9:00 PM. That's too bad, because we didn't get a chance to review the really fun, fancy things in iMessage, the Apple proprietary instant messaging service. That's more to cover at our next virtual meeting on August 24.

John Fair



Secretary's Report for 7/16/20 CUE Meeting

The members of Computer Users Of Erie (CUE) met remotely on the web with a Zoom video conferencing link.

There were 20 people in attendance. Their names on screen were names they chose as login names. Their names on screen were PAUL FRANCIS, Dave and Eta Howell, John Fair, John Cornwell - Pittsburgh, Jon Mazur - Pittsburgh, Lee Williams, CUser Group, Don Rhodes, Hall Kelley, Linda Williams, Mike Ceschini - Pittsburgh, Allison McKinstry, Elizabeth Wisniewski, jrobert, Conrad, Ron Kazor - Pittsburgh, Santa's iPad, Ken From Erie, Janice, and DonGrimWithChromebook.

The 7 PM meeting had some general discussion then John Fair gave a presentation on Ports and Cables. It included slides of information and some videos related to the topic.

Paul Francis opened the business meeting at 8:19 PM.

Treasurer Janice Castro mentioned that the treasury balance is \$2,744.41. There was a recent expense of \$31.78 for Zoom and \$106 in CUE dues, including for two new members (Sam and Ken). Janice reminded members, for this year, to mail a check to renew dues (\$24), along with an application form (to include up-to-date

information) to CUE, PO Box 8941, Erie, PA 16505-0941. Janice will send a message to the CUE group about dues.

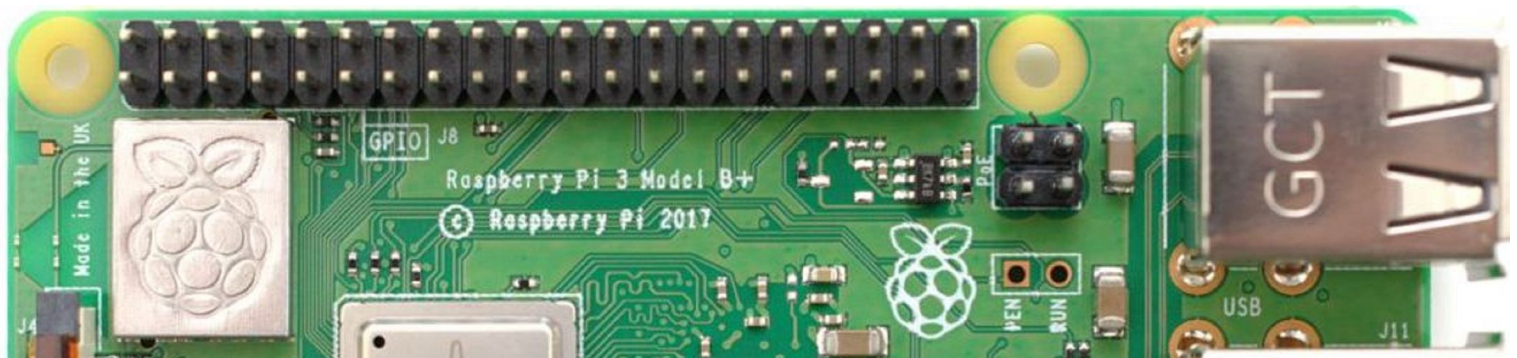
There was discussion about the CUE Picnic and CUE Holiday Party, hoping that both can still be available this year.

There were no reports available for the Genealogy, Photo, MAC, and Windows SIG's. John Fair talked about the Smartphone & Tablet SIG. He is getting about 6 to 8 visitors to the SIG by Zoom. Earlier face-to-face meetings had about 12 visitors. Their last SIG talked about roadrunner email and a wifi router to an iphone.

John Fair, Janice Castro, and Don Grim plan to meet sometime to discuss any possible changes to the CUE Bylaws.

The meeting was closed and then there was more discussion with the visitors from the CUser Group near Pittsburgh. Some of the discussion was on the Raspberry Pi Computer, donating old computers, and comparisons between the CUser Group and the CUE Group. The Zoom session ended at 8:57 PM.

Respectfully Submitted,
Don Grim, Secretary



Dues News (Rhyme Time)

Who? CUE Crew! New Dues! You Knew! Phew!

Due to our reduction of physical meetings, during this year of the virus, please mail a renewal check, if you have not already (24 members have paid so far), before the end of August, for your CUE Dues, to continue your CUE membership. Please mail \$24 to CUE, along with a completed membership application (in case your vitals have changed) to:

CUE
PO Box 8941
Erie, PA 16505-0941

If you are a new member, the dues are \$2 multiplied by the number of months you are a member in the first year. You could call someone on the list of names near the end of the newsletter if you want a verification of your dues for your first year of membership. Thanks for your membership as we all work together to help each other with technological topics.

A Note from the Editor

As usual, feel free to contribute information for the CUE newsletter. Whether it is small, large, an article, a tip, information, or pictures, you can send it to me and I will plan to include it in the newsletter. You can reach me at grimcyber@yahoo.com.

Remember that you can find recent news at the CUE website (cuerie.com). At times,

the website will have more recent news than the CUE newsletter since the website is updated continuously and the newsletter is updated monthly.

Stay Safe!

Editorially Speaking, Don Grim



PLEASE PRINT

**COMPUTER USERS OF ERIE
MEMBERSHIP APPLICATION**

Today's Date _____

Last Name	First Name
Address	
City, State	Zip
Home Phone	Cell Phone
Your Email	

The yearly dues are payable in August of each year. The dues are \$24 annual.

For NEW members only, when you join outside the annual cycle your initial dues are based upon the month you join. Follow the schedule below.

August \$24	September \$22	October \$20	November \$18
December \$16	January \$14	February \$12	March \$10
April \$8	May \$6	June \$4	July \$2

Information provided on this form will be placed into a CUE Membership Directory

What is your Computer or Device: (Circle)

Windows Mac Android iPhone iPad
Tablet Linux Other

What is your level of expertise? (Circle)

Novice I know some I want to learn more
Expert Geek

Send your completed application
to:

Computer Users of Erie

PO BOX 8941

Erie, Pa 16505-0941

What do you wish to gain by joining Computer Users of Erie?

Student membership is just \$15 per year (provide proof of student status)

CUE Officer Information

Officers

President	Paul Francis	pdfflyer@roadrunner.com	814-882-1175
Vice President	John Fair	johncfair@gmail.com	814-474-3055
Secretary	Don Grim	grimcyber@yahoo.com	814-461-8289
Treasurer	Janice Castro	jcastrocue@outlook.com	312-543-9128

At-Large Board

Hal Kelley	hal_kelley@outlook.com	814-836-1803
Suzanne Matthews	pdxmatthews@aol.com	814-790-4185
Susan Mueller	suepasta@roadrunner.com	814-622-1262
David Runser	ml350djr@gmail.com	814-873-1740
Conrad Sobczak	hatsob@verizon.net	814-899-9699

Alternate At-Large Board

Lou Cioccio	lcioccio@mac.com	814-868-1320
Marsha Keller	dekmak43@gmail.com	814-449-4682

Special Interest Groups

Beginner's (BUG)	Lou Cioccio	lcioccio@mac.com	814-868-1320
Digital Photo	Lou Cioccio	lcioccio@mac.com	814-868-1320
Genealogy	Susan Mueller	suepasta@roadrunner.com	814-622-1262
MAC	Lou Cioccio	lcioccio@mac.com	814-868-1320
Smartphone & Tablet	John Fair	johncfair@gmail.com	814-474-3055
Windows	Lou Cioccio	lcioccio@mac.com	814-868-1320

Other Resources:

CUE Historian	Tom Kuklinski	tkuklinski@gmail.com	814-746-9165
DOS Information	Don Grim	grimcyber@yahoo.com	814-461-8289
Editor	Don Grim	grimcyber@yahoo.com	814-461-8289
Librarian	Tanya Mattson	449t1m@gmail.com	814-833-1404
Membership Chair	John Fair	johncfair@gmail.com	814-474-3055
Webmaster	Tom Kuklinski	tkuklinski@gmail.com	814-746-9165

CUE Disclaimer

The Computer Users of Erie (CUE), a nonprofit affiliate of APCUG, is not connected with, nor does it represent the interests of such organizations as IBM, Apple, Texas Instruments, Microsoft, or any other manufacturer or vendor, nor can it assume responsibility for the accuracy or misrepresentation of materials or statements found in advertisements, articles, announcements, or presentations appearing in its newsletter or at CUE sponsored meetings. The members of the CUE Board of Directors, committees, and SIGs are volunteers giving of their time and energy to assist CUE members through education. CUE shall not be held liable in name or performance for the outcome of activities or agreements to provide services offered by any person in the name of CUE. CUE welcomes comments, letters, original articles and programs for its newsletter. Such materials may be submitted to: CUE Editor, P.O. Box 8941, Erie, PA, 16505-0941. Also you can email grimcyber@yahoo.com. Permission is hereby granted to other nonprofit computer user groups to reprint articles appearing herein, unless specifically restricted, provided credit is given to both its author, if known, and its original source.

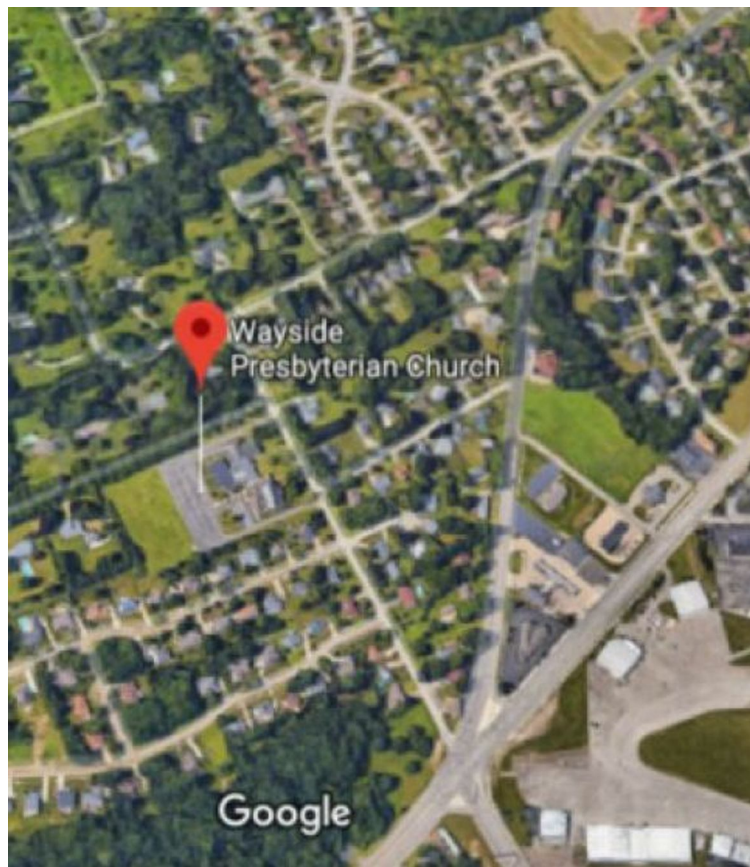
Directions to Wayside Presbyterian Church for CUE Meetings

Wayside Presbyterian Church, at 1208 Asbury Road, is approximately three blocks north of the intersection of Asbury Road and Route 5. This intersection is at the northwest corner of the Erie International Airport property. Following Asbury, turn left at the first marked driveway for the church. During the afternoon winter schedule (10:00 AM for the months of November, January, February and March), entry is through the two sets of blue double doors. Use the buzzer to gain entry if the doors are locked. During the normal evening schedule (7:00 PM the remaining months) use the double doors on the south side of the Christian Education wing. Signs are posted in the building to direct you to the meeting room.

From West of Erie International Airport: Follow Route 5 to the intersection of Asbury and Route 5. Turn hard left onto Asbury Road. Look for the church on the left approximately 3 blocks north of the intersection.

From South of Erie: Take Interstate 79 north to the 26th Street (Route 20) Exit. Bear left onto 26th Street (Route 20) west. Follow Route 20 about 3.4 miles west to Asbury Road. Turn right (at the Sheetz Gas Station) onto Asbury and follow it straight across Route 5. Look for the church on the left approximately 3 blocks north of the intersection.

From East of Erie International Airport: Follow 26th Street (Route 20) west to Asbury Road. Turn right onto Asbury and follow it straight across Route 5. Look for the church on the left approximately 3 blocks north of the intersection. OR, follow 12th Street (Route 5) west past the airport to Asbury Road. Turn right onto Asbury Road. Look for the church on the left approximately 3 blocks north of the intersection.



About the Newsletter

The CUE Newsletter is published monthly by the Computer Users of Erie (CUE), an independent nonprofit computer user group, dedicated to the education and support of our members. The opinions expressed herein are those of the individual authors or the editor, and do not necessarily reflect the opinions of CUE. This publication is Copyright © 2018 by the Computer Users of Erie. All rights reserved. Permission to reprint is hereby granted to any Nonprofit Organization, as long as proper credit is given, or not restricted by the original author or source. **Advertising:** Advertising is welcome from both our members and commercial sources. For current advertising rates, please send an email to the Editor requesting a copy of the Ad Rates file. **Address Changes:** Any recipient of the newsletter is urged to submit a change of address notification to the Editor, either via US Mail to the address shown below, or (preferably) via email, so we may keep our records accurate. **Newsletter Exchange:** CUE welcomes newsletters from other user groups. If you would like to exchange newsletters, either by US Mail or via electronic (Internet) delivery, please send your newsletter to the address listed below. We will add your name to our mailing list and send you our newsletter in return. **Submissions:** Submissions are always welcome from our members or outside sources. Submissions may be articles, images, cartoons, etc. For first time authors, please request a copy of our Submissions Guidelines from the Editor, prior to submitting any items. This will help to eliminate publication delays. Submissions are due by the 5th of each month. **Correspondence:** General correspondence to CUE may be sent via US Mail to: Computer Users of Erie, PO Box 8941, Erie, PA 16505-0941 USA. Email to: cuerie@gmail.com. Editor Email to: grimcyber@yahoo.com.

CUE Membership Benefits



As the largest computer users group in northwest Pennsylvania, CUE has served Erie and surrounding communities since 1982. CUE provides a forum for people to learn about computers and have fun doing so. The group meets the third Thursday each month, with the exception of the months of July and December. In July the group gathers for a picnic and December is the annual holiday party (dates vary). CUE meetings are at Wayside Presbyterian Church, 1205 Asbury Road, Erie. Meetings from April through October are at 7:00 p.m. From November through March, the meetings are at 10:00 AM in the morning.

Our monthly meetings are open to the public regardless of age or ability. Many of our members are senior citizens who span a wide range of capabilities and interests but share a desire to know more about how to use computer related technology. Our role is to provide a forum for continuous learning from each other. CUE has a closed Google gmail group that is used to communicate with members and to post questions/problems to seek answers from the membership. Members pay an annual membership fee of \$24 to receive a membership directory, monthly newsletter, availability to monthly general meetings, and any of the Special Interest Group (SIGs) meetings, usually held in a member's home. Locations and times vary, so check the online EVENTS Calendar on the website for the latest information. SIG topics include:

- Digital photography [and photo safari]
- Genealogy
- Macintosh computers
- Computer troubleshooting
- Beginners users group (BUG)
- Handheld smartphones and tablets

CUE is a member of the Association of Personal Computer User Groups (APCUG). APCUG is an International, platform-independent, volunteer-run, non-profit organization devoted to helping member User Groups offer enhanced services to their members. Some of the membership benefits include:

- Speakers bureau
- Free virtual technology conferences
- Regional conference
- Push newsletter articles
- Discounts and special offers from vendors
- User group newsletters online

Find us online at <http://www.cuerie.com/>. And Facebook @cuerie

Computer Users of Erie
PO Box 8941
Erie, PA 16505-0941

Postmaster:
Address Service Requested



Address label here