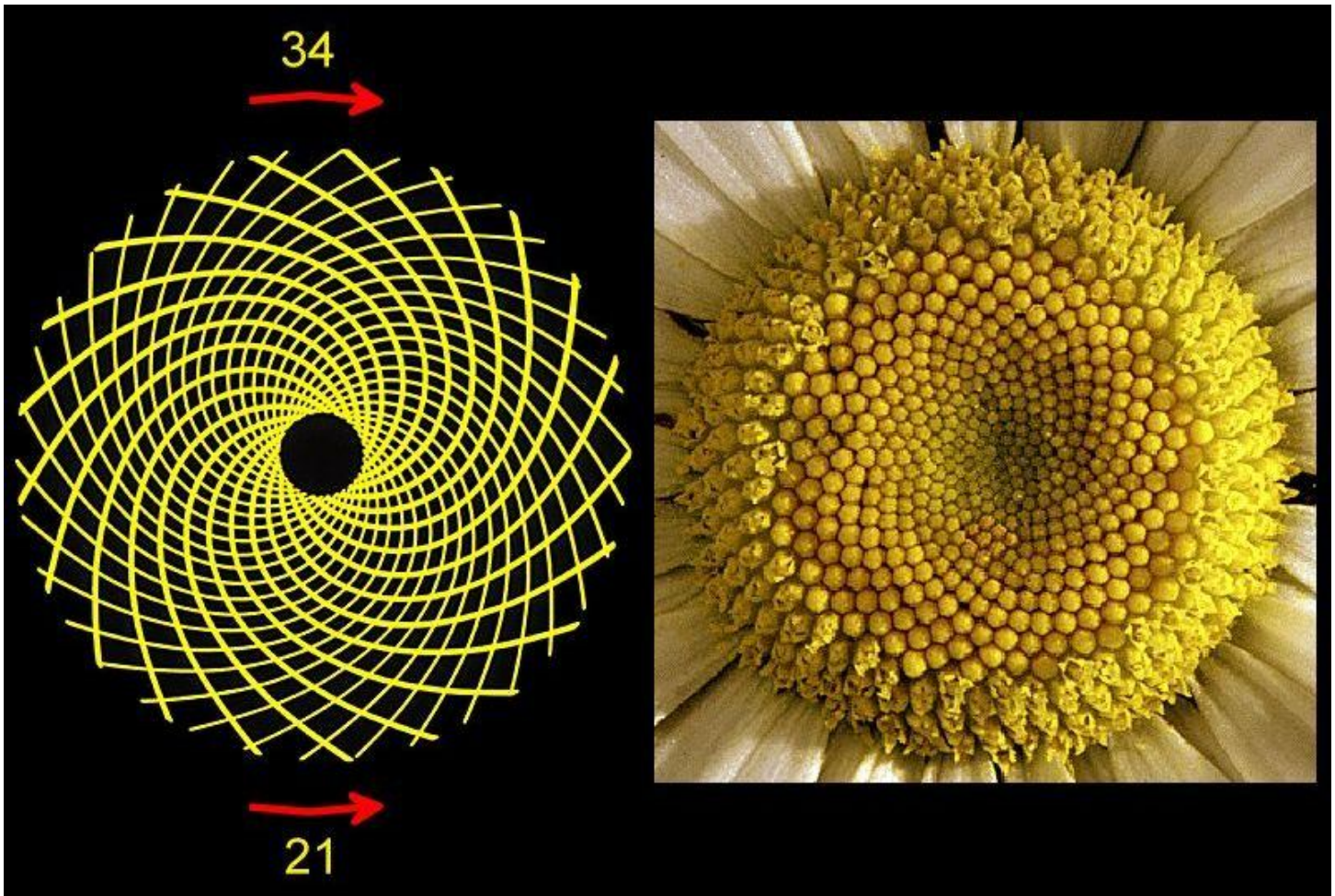


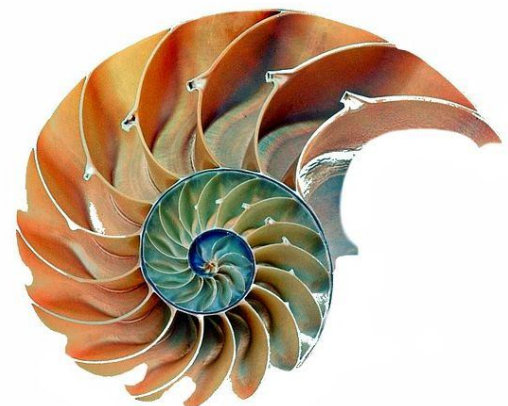
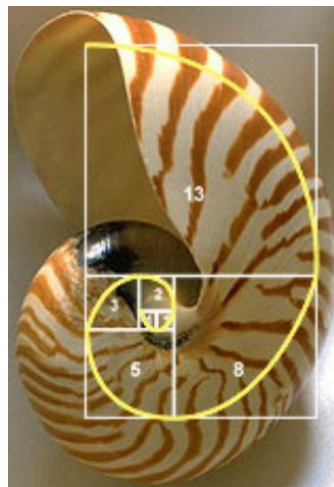
# COMPUTER USERS OF ERIE

CUE Newsletter – August 2021 (Volume 38 Number 8)



## August CUE Meeting

The next general meeting is on Thursday August 19<sup>th</sup> at 7:00 PM, by a Zoom link in your email, with a demo called “Muisic in the Car”. The CUE Website has more information.



Visit the CUE Website at:

[www.cuerie.com](http://www.cuerie.com)

CUE is a member of APCUG



An International  
Association of Technology  
& Computer User Groups

# CUE Calendar



Calendar events are subject to change. SIG stands for Special Interest Group.  
(look for notices outside of the newsletter for delays or special news on meetings)

**CUE Membership Meetings** (typically 3<sup>rd</sup> Thursday of each month)  
Thursday August 19<sup>th</sup> at 7 PM  
Thursday September 16<sup>th</sup> at 7 PM

**Beginner's User Group (BUG) SIG Meetings**  
To Be Scheduled Upon Request

**Digital Photo SIG Meetings** (typically 1<sup>st</sup> Saturday of each month except June/July/August)  
Saturday September 4<sup>th</sup> at 9:30 AM  
Saturday October 2<sup>nd</sup> at 9:30 AM

**Genealogy SIG Meetings** (typically 1<sup>st</sup> Tuesday of each month)  
Tuesday August 3<sup>rd</sup> at 7 PM  
Tuesday September 7<sup>th</sup> at 7 PM

**MAC SIG Meetings** (typically 2<sup>nd</sup> Saturday of each month except June/July/August)  
Saturday September 11<sup>th</sup> at 9:30 AM  
Saturday October 9<sup>th</sup> at 9:30 AM

**Smartphone & Tablet SIG Meetings** (typically 4<sup>th</sup> Monday of each month) (RSVP John Fair)  
Monday August 23<sup>rd</sup> at 7 PM  
Monday September 27<sup>th</sup> at 7 PM

**Windows SIG Meetings** (typically 2<sup>nd</sup> Saturday of each month except June/July/August)  
Saturday September 11<sup>th</sup> at 1 PM  
Saturday October 9<sup>th</sup> at 1 PM

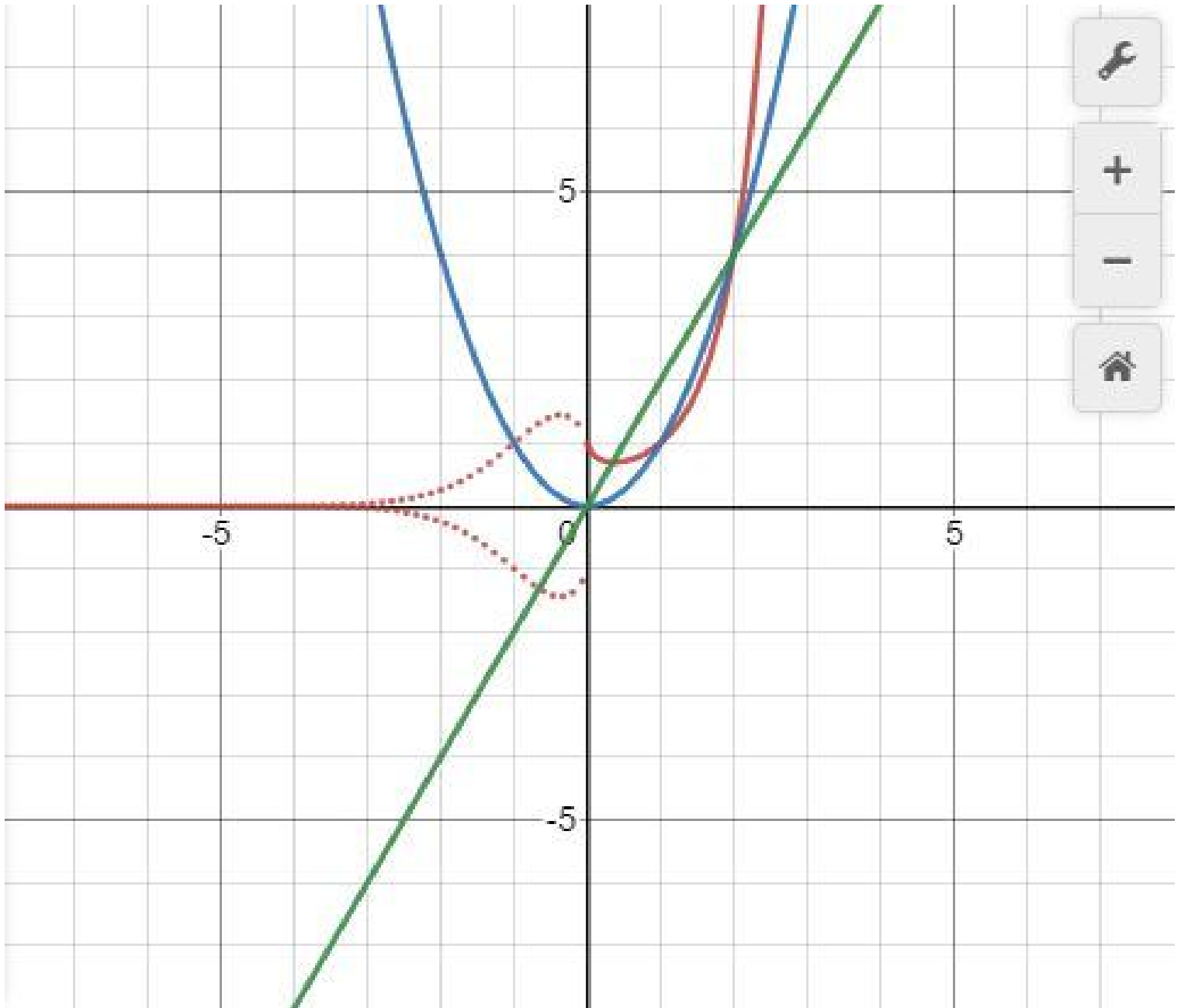
**CUE Picnic**  
Possibly on September 16, 2021!

**CUE Christmas/Holiday Party**  
Thursday December 2<sup>nd</sup> at 6 PM

# Beauty In My Beheld Eye

By Don Grim at Computer Users of Erie

You can call me sheltered, nerdy, or weird, but this is one of the most beautiful pictures I have ever seen! I have known about the relationship of these three formulas for years but it was only until this year that I graphed it on a graphing calculator (at [www.desmos.com](http://www.desmos.com)) that shows it completely! The green formula shows addition of two like amounts (doubling,  $x+x$ ). The blue formula shows multiplication of two like amounts (squaring,  $x*x$ ). The red formula shows exponentiation of two like amounts (exponentiating,  $x^x$ ).



These are the main operations in math! When you have an operation of like amounts, it jumps to the next operation! Symbolically speaking,  $x+x=x*2$ ,  $x*x=x^2$ , and  $x^x=x\uparrow 2$ . You can define an operation before addition and an operation after exponentiation, but it loses some useful qualities, like the commutative and associative laws.



## Beauty Beheld Continued

Before there were computers, I graphed these three formulas on graph paper. In the 80's, I wrote a computer program that graphed the three formulas to the screen. It was basically a graphing calculator before the hand-held graphing calculators came along.

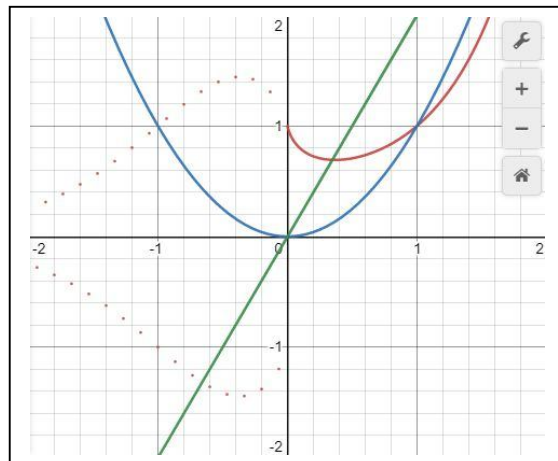
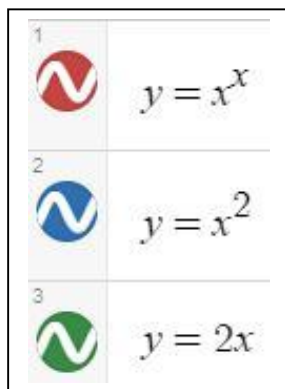
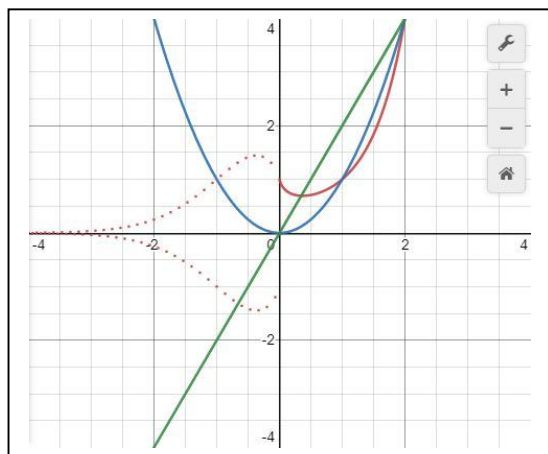
The problem with my computer program, and hand-held graphing calculators, is that it would not graph the  $x^x$  (red) formula when  $x$  is negative. That is because values of  $x^x$  are all over the place when  $x$  is negative. Some of the values are real numbers and some of the values are complex (imaginary) numbers. When the values are real, they jump between being positive and negative. That is why this picture (finally done completely by the Desmos calculator on the web) shows red dots for the real values. It completes the picture, which, to me, is a beautiful picture!

I have a few additional interesting notes about these formulas. When looking at the red  $x^x$  graph when  $x$  is positive, it goes no lower than  $0.6922006\dots$  (which is  $0.3678794\dots^{\wedge} 0.3678794\dots$ ) (or  $1/e$  to the  $1/e$  power). So, there are no positive values for  $x$  where  $x^x$  would equal something as low as  $0.25$ . That gave me the inspiration to propose one of my favorite problems:

$$X^X = 0.25 \text{ (solve for } X\text{)}$$

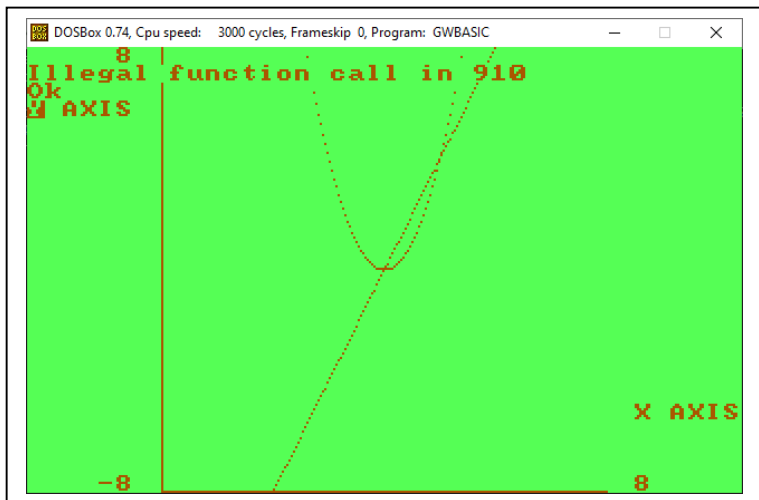
When I was student-teaching, I gave the problem to a college-prep Algebra class. They looked at it for a few weeks and a student finally came up with the answer. The students were hesitant to try negative values for  $x$  since  $x^x$  was tough to define for negative values of  $x$ . Finally, one student tried  $x = -2$  and of course,  $-2^{-2}$  does equal  $0.25$ , so he solved it!

The other interesting note is the formulas are sort of like the tortoise and the hare story. Here, early on, the red formula (hare) is the furthest to the right and the green formula (straight line, Steady Eddie, tortoise) is the furthest to the left. However, when they all run into each other at  $x$  equaling  $2$  (since all three formulas have the value of  $4$  at that point), the green tortoise takes the lead and is the furthest to the right, the rest of the way! The blue formula stays in about second place the whole time. It's just a beautiful picture, brought to you by the beautiful mathematical operations! Here are zoomed-in pictures:



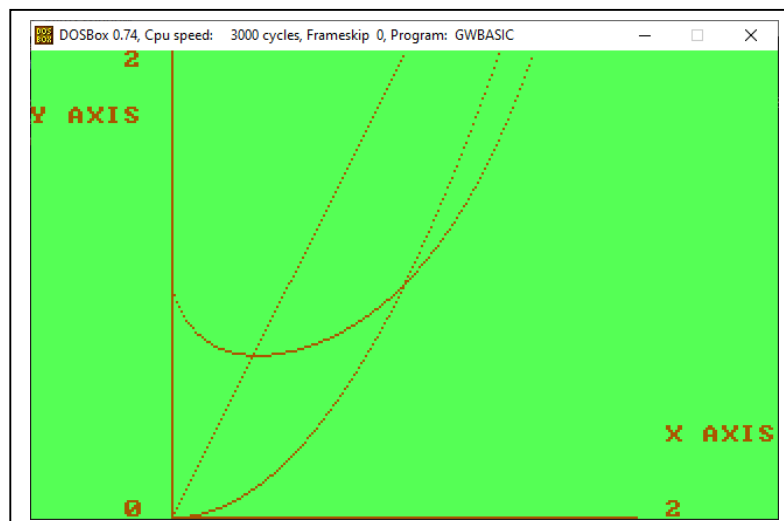
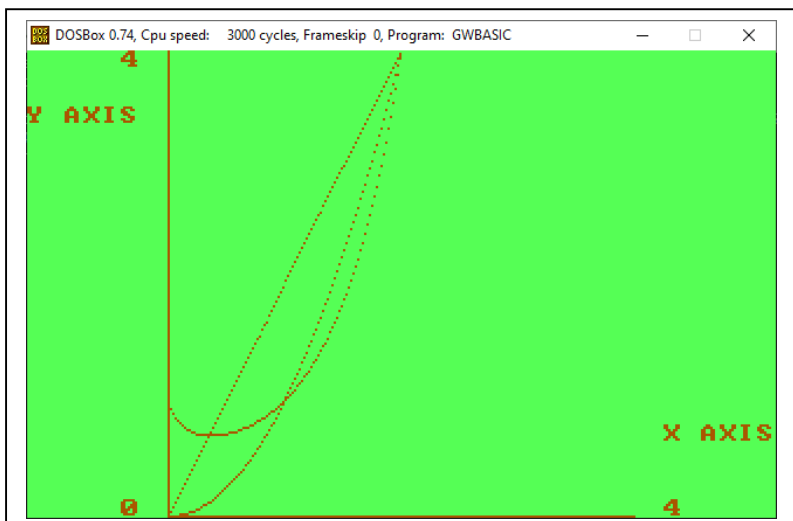
## Beauty Beheld Continued

The latest versions of Windows (7 and up) do not support DOS programs, including GWBASIC programs written under DOS. So, my graphing program from the 80's can't be run directly on modern Windows computers. However, the free DOSBox emulator program comes to the rescue, allowing me to still run my old program! The following pictures are from my DONNEWGR.BAS program, from the 80's, run on DOSBox on a Windows 10 computer. It shows graphs to the screen. It was a follow-up to my DONGRAPH.BAS program that printed graphs only to a printer. Here is the graph from -8 to 8 at the left. The formulas are entered by including them in line numbers in the program, shown to the right. It graphs two formulas but when it gets to the  $x^x$  formula, it "bombs", stops, and gives an "illegal function" message. Nobody did anything "illegal"! The program just preferred not to calculate negative values for the formula. The Desmos (which sounds almost like DOS!) graphing calculator, mentioned earlier, had no problem with it!



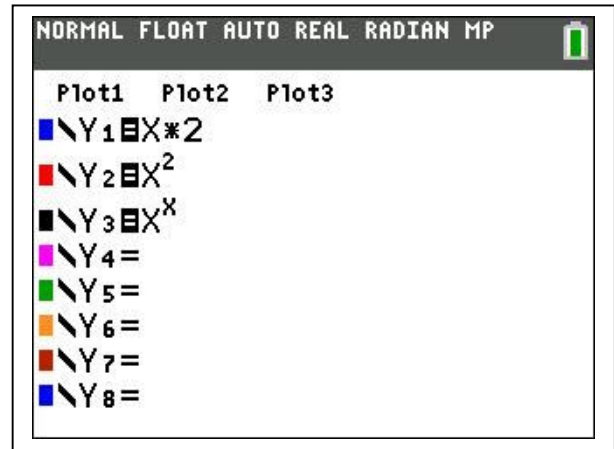
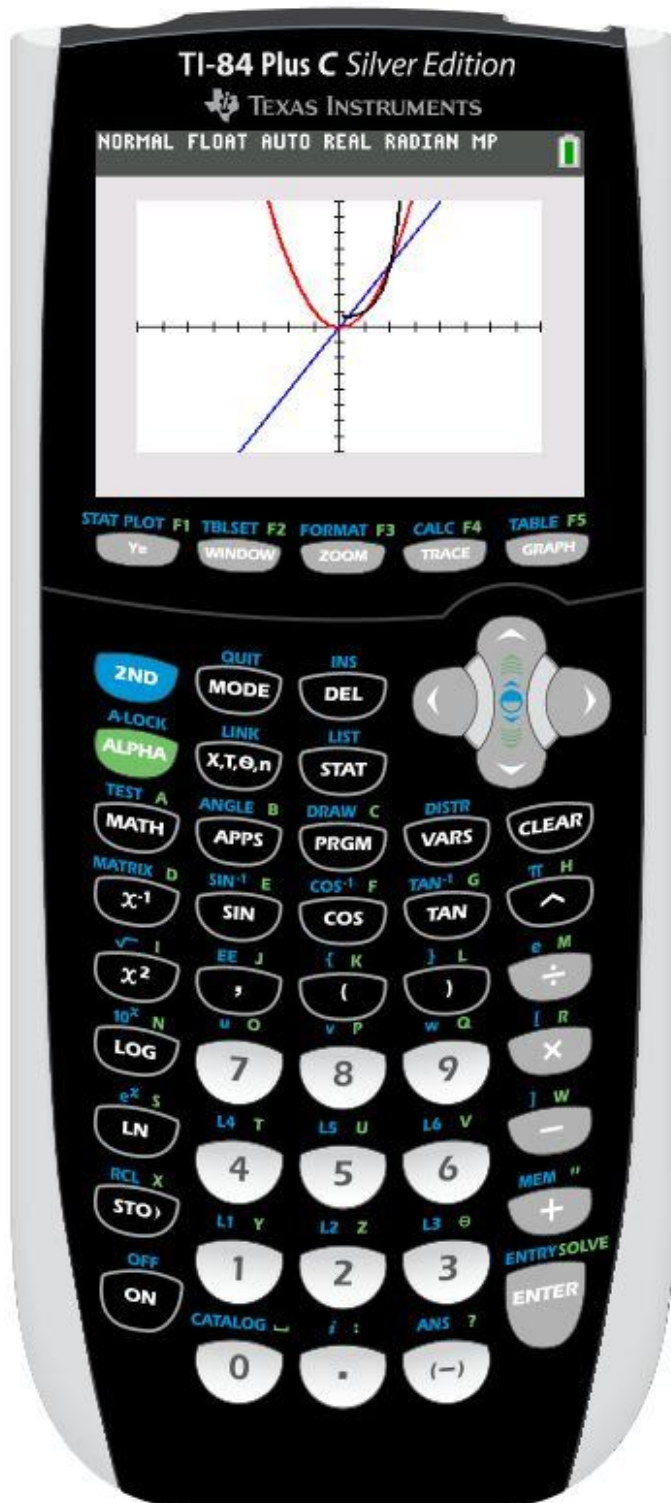
```
OK
LIST 890-1080
890 IF Z=1 THEN V=X*2:GOTO 1090
900 IF Z=2 THEN V=X^2:GOTO 1090
910 IF Z=3 THEN V=X^X:GOTO 1090
920 IF Z=4 THEN V=X*4:GOTO 1090
930 IF Z=5 THEN V=X*5:GOTO 1090
940 IF Z=6 THEN V=X*6:GOTO 1090
950 IF Z=7 THEN V=X*7:GOTO 1090
960 IF Z=8 THEN V=X*8:GOTO 1090
970 IF Z=9 THEN V=X*9:GOTO 1090
980 IF Z=10 THEN V=X*10:GOTO 1090
990 IF Z=11 THEN V=X*11:GOTO 1090
1000 IF Z=12 THEN V=X*12:GOTO 1090
1010 IF Z=13 THEN V=X*13:GOTO 1090
1020 IF Z=14 THEN V=X*14:GOTO 1090
1030 IF Z=15 THEN V=X*15:GOTO 1090
1040 IF Z=16 THEN V=X*16:GOTO 1090
1050 IF Z=17 THEN V=X*17:GOTO 1090
1060 IF Z=18 THEN V=X*18:GOTO 1090
1070 IF Z=19 THEN V=X*19:GOTO 1090
1080 IF Z=20 THEN V=X*20:GOTO 1090
Ok
```

Here are zoomed-in pictures with positive values of x, so it doesn't bomb:

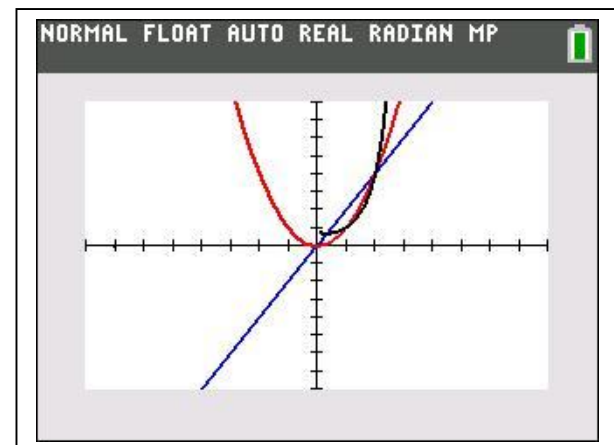


## Beauty Beheld Continued

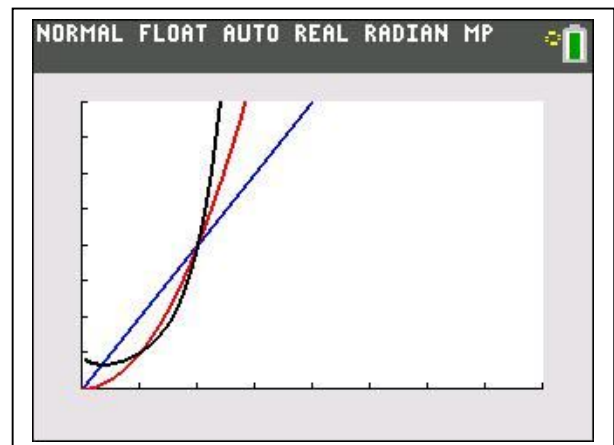
Here are the same formulas represented on a TI-84 graphing calculator. It is a sentimental privilege to use this calculator since my first home computer was a TI (Texas Instruments) computer (TI-99/4A in 1983) and I've used a TI solar scientific calculator (complete with trig and stats) (TI-30 SLR+) at work for decades (since 1987). The picture below shows the three formulas on the TI-84. It doesn't "bomb". Instead, it just skips showing values for  $x^x$  when  $x$  is negative. So, it is still not as complete as the Desmos graphing calculator.



Three formulas entered above for TI84.



$X^X$  formula blank when  $X$  is negative.



$X^X$  formula shows when  $X$  is positive.

# Beauty Beheld Continued

Code to Graph computer program:

```
10 REM DONNEWGR.BAS - RESOLUTION GRAPH
20 DEFDBL F
30 SCREEN 1,0
40 COLOR 10,0
50 DIM A(200),B(200),F(200),G(200)
60 CLS
70 PRINT"INPUT F FOR FUNCTION GRAPH OR"
80 INPUT " P FOR POINTS GRAPH":D$
90 IF D$="F" THEN 120
100 IF D$="P" THEN 130
110 GOTO 70
120 INPUT"NUMBER OF FUNCTIONS - MAX OF 20":Z1
130 INPUT"TITLE OF X AXIS":E1$
140 INPUT"TITLE OF Y AXIS":E2$
150 INPUT"LOWER LIMIT OF X AXIS":X1
160 INPUT"UPPER LIMIT OF X AXIS":X2
170 INPUT"LOWER LIMIT OF Y AXIS":Y1
180 INPUT"UPPER LIMIT OF Y AXIS":Y2
190 INPUT"IS SCREEN CORRECT?":X$
200 IF X$<="Y" THEN 60
210 IF D$="P" THEN 220 ELSE 470
220 CLS
230 INPUT"NUMBER OF POINTS - MAX IS 200":H
240 IF H>200 THEN 230
250 CLS
260 PRINT"PRESS ENTER IF AN ITEM IS CORRECT."
270 PRINT"OTHERWISE INPUT DATA AND PRESS ENTER.":PRINT
280 PRINT"INPUT FOR X COORDINATE POINTS":PRINT
290 FOR I=1 TO H
300 P=F(I)
310 PRINT F(I);"IS POINT #";I;"OR";:INPUT F(I)
320 IF F(I)=0 THEN F(I)=P
330 NEXT I
340 INPUT"IS SCREEN CORRECT?":X$
350 IF X$<="Y" THEN 250
360 CLS
370 PRINT"PRESS ENTER IF AN ITEM IS CORRECT."
380 PRINT"OTHERWISE INPUT DATA AND PRESS ENTER.":PRINT
390 PRINT"INPUT FOR Y COORDINATE POINTS":PRINT
400 FOR I=1 TO H
410 P=G(I)
420 PRINT G(I);"IS POINT #";I;"OR";:INPUT G(I)
430 IF G(I)=0 THEN G(I)=P
440 NEXT I
450 INPUT"IS SCREEN CORRECT?":X$
460 IF X$<="Y" THEN 360
470 CLS
480 LOCATE 22,35
490 PRINT E1$
500 LOCATE 25,1
510 PRINT " X1:" X2
520 LOCATE 24,1
530 IF X1<Y1 THEN PRINT " Y1
540 LOCATE 4,1
550 PRINT E2$
560 LOCATE 1,1
570 PRINT " Y2
580 LINE(60,0)-(60,199)
590 LINE(60,199)-(259,199)
600 FOR I=1 TO 200
610 A(I)=Y2-(I-1)*(Y2-Y1)/199
620 B(I)=INT(A(I)*100+.5)/100
630 B(I)=X1+(I-1)*(X2-X1)/199
640 B(I)=INT(B(I)*100+.5)/100
650 NEXT I
660 IF D$="P" THEN 670 ELSE 860
670 FOR I=1 TO H:REM CREATING GRAPH FOR INPUTTED POINTS
680 IF G(I)>Y2 THEN 840
690 IF G(I)<Y1 THEN 840
700 FOR J=1 TO 199
710 IF G(I)>A(J+1) THEN 740
720 NEXT J
730 J=199
740 FOR K=1 TO 199
750 IF F(I)<B(K+1) THEN 780
760 NEXT K
770 K=199
780 IF A(J)-G(I) > G(I)-A(J+1) THEN 790 ELSE 820
790 IF B(K+1)-F(I) > F(I)-B(K) THEN PSET(K+59,J+1-1)
800 IF B(K+1)-F(I) <= F(I)-B(K) THEN PSET(K+1+59,J+1-1)
810 GOTO 840
820 IF B(K+1)-F(I) > F(I)-B(K) THEN PSET(K+59,J-1)
830 IF B(K+1)-F(I) <= F(I)-B(K) THEN PSET(K+1+59,J-1)
840 NEXT I
850 GOTO 1180
860 FOR Z=1 TO Z1
870 FOR I=2 TO 200:REM CREATING GRAPH FOR FUNCTION
880 X=B(I)
890 IF Z=1 THEN Y=X^2:GOTO 1090
900 IF Z=2 THEN Y=X^2:GOTO 1090
910 IF Z=3 THEN Y=X^X:GOTO 1090
920 IF Z=4 THEN Y=X^4:GOTO 1090
930 IF Z=5 THEN Y=X^5:GOTO 1090
940 IF Z=6 THEN Y=X^6:GOTO 1090
950 IF Z=7 THEN Y=X^7:GOTO 1090
960 IF Z=8 THEN Y=X^8:GOTO 1090
970 IF Z=9 THEN Y=X^9:GOTO 1090
980 IF Z=10 THEN Y=X^10:GOTO 1090
990 IF Z=11 THEN Y=X^11:GOTO 1090
1000 IF Z=12 THEN Y=X^12:GOTO 1090
1010 IF Z=13 THEN Y=X^13:GOTO 1090
1020 IF Z=14 THEN Y=X^14:GOTO 1090
1030 IF Z=15 THEN Y=X^15:GOTO 1090
1040 IF Z=16 THEN Y=X^16:GOTO 1090
1050 IF Z=17 THEN Y=X^17:GOTO 1090
1060 IF Z=18 THEN Y=X^18:GOTO 1090
1070 IF Z=19 THEN Y=X^19:GOTO 1090
1080 IF Z=20 THEN Y=X^20:GOTO 1090
1090 IF Y>Y2 THEN 1160
1100 IF Y<Y1 THEN 1160
1110 FOR J=1 TO 199
1120 IF Y>A(J+1) THEN 1150
1130 NEXT J
1140 J=199
1150 IF A(J)-Y > Y-A(J+1) THEN PSET(I+59,J+1-1) ELSE PSET(I+59,J-1)
1160 NEXT I
1170 NEXT Z
1180 REM
1190 GOTO 1180
1200 END
1210 Y=SIN(X)*TAN(X)
```

I don't just see beauty in math. I also see beauty in nature. I think there is a common thread. They are both discoveries, not human inventions. That is beauty beyond us! I'll close with a poem I wrote about nature, called "More Beautiful".

## More Beautiful

What is more beautiful than green grass and a blue sky?  
Real beauty, just like real truth, cannot be a lie

Look at God's wonderful creations and you will realize  
No camera can capture all the beauty that is before your eyes

The colors in a sunset give an indescribable thrill  
I marvel at a sunbeam that only shines on a far hill

Have you really studied a bird in flight?  
Then told yourself, what an amazing sight

Look at everything an elephant does with his trunk  
And remember that God does not make any junk

And of all the creations, God made us in his own image  
He loves us so much, he made a remarkable pledge

He promises that even after death, we can live!  
For if we accept him as Savior, he will forgive

The wonders of creation praise his name  
So why shouldn't we all do the same

What is more beautiful than green grass and a blue sky?  
The One who created us from above that sky, way up high

Let us worship the King of Kings and Lord of Lords  
For what is more beautiful than the promise of God's words!





## Genealogy Report for 7/6/21 SIG Meeting

The July meeting of the Genealogy SIG met via Zoom on July 6, 2021. Sue Mueller called the meeting to order with fourteen in attendance.

Conrad Sobczak talked about the book he enjoyed called Sea Venture, Survival, and the Salvation of Jamestown by Kieran Doherty in case anyone has ancestors in the people of the Jamestown Colony.

Paul Francis had the big genealogy mystery of the evening. He has a DNA match at 933 centimorgans on Gedmatch. The person was a male 66-68 years old and an adoptee. Sue looked up the relationship possibilities with that high a match on DNA Painter's Shared Centimorgan Tool and came up with

Great-Grandparent Great-Aunt / Uncle Half Aunt / Uncle/ 1C /Half Niece / Nephew/ Great-Niece / Nephew/ Great-Grandchild. All members are encouraged to help Paul solve this mystery.

Carl Zalewski is looking for his grandfather's village in Eastern Europe. Fold3 was suggested as some draft records might have that information.

Conrad mentioned the September CUE picnic is coming up.

Everyone was reminded that dues for the CUE group are due in August.

Submitted by Connie Edwards





## Smartphone & Tablet Report for 7/26/21 SIG Meeting

The SIG discussed new releases of Apple's mobile device operating systems. Apple released iOS 14.7 on July 19 and iPadOS 14.7 several days later. We discussed the features of both but none could be considered major. The day of our meeting Apple released iOS 14.7.1 and iPadOS 14.7.1 which contained "improved checks" to stop the SSID bug which could result in denial of service or arbitrary code execution. This is a very important upgrade which all Apple iPad and iPhone users should download as soon as possible. We also emphasized that all users should use settings that ask user permission before joining a new Wi-Fi network. Go to Settings > WiFi > Networks > Ask to join Networks > Ask. We added a caution that users should never use public Wi-Fi without a VPN (Virtual Private Network) and never use a free VPN. Use your cellular connection instead of public Wi-Fi.

We discussed what a VPN is and why it protects you when using public Wi-Fi. A paid VPN securely encrypts your data traffic and disguises your location as traffic then comes from the VPN server instead of your actual location thus masking your online activities. CUE is considering having a Monthly Meeting Program on VPN's so club members can learn more about them since we will be "out and about" more in the coming months and potentially wanting to use hotel, coffee shop, restaurant, etc. WiFi.

We talked about Pegasus, a real security threat right out of a spy novel, that is a system licensed by Israel's NSO Group to government clients. Its capabilities, just recently revealed by a coalition of news

outlets and Amnesty International, allow even a new fully updated iPhone to be hacked with a single text message that would not require any action on the users part and never be seen by the user. Any brand of smartphone can be targeted but iPhones are more common since they are used by heads of state and dissidents because of their reputation for privacy and security. Pegasus is marketed to smaller countries because larger countries already have their own similar capabilities. The consensus of experts is that average people do not need to be concerned about Pegasus since the system is very expensive to employ. However, the existence of this and similar capability should provide incentive for us to follow the news about iPhone security and always update our operating systems asap.

We also talked about subjects which are much closer to home: robocalls and caller id spoofing. The largest cellular service providers were required to adopt STIR (Secure Telephone Identity Revisited) and SHAKEN (Signature-based Handling of Asserted information using toKENs) authentication standards by June 30 of 2021. But this alone will not stop robocalls and caller id spoofing. Copper land lines can't support this technology and providers with fewer than 100,000 customers are exempt. So perhaps we can see fewer instances of this annoying problem but it won't yet go away.

I found a very useful resource while researching the security issues: [twit.tv](https://www.twit.tv/). Leo Laporte founded this podcast network. The abbreviation stands for "this week in tech" and the network can be found by

## Smartphone & Tablet Report Continued

typing [twit.tv](http://twit.tv) into your browser address bar. Nearly all aspects of technology are featured and the podcasters are both entertaining and informative.

Finally, we discussed and demonstrated several useful apps. Unsplash is home to over 2.5 million free high-resolution images which are copyright free and generously shared by very talented photographers. The photos are curated into a large variety of subjects and the app contains a search feature which allows users to pull up photos by a subject of their choosing. Example: Zoom virtual backgrounds.

My wife and I each use Google Calendar and we incorporate the combined data into a joint Apple Calendar. I find it handy to use the Google Calendar app set on "Schedule" to see a scrollable list of my events to supplement the monthly view in my Apple Calendar. Another app I have recommended in previous meetings: I use Investigator to view the metadata imbedded in my photos. I find it useful to

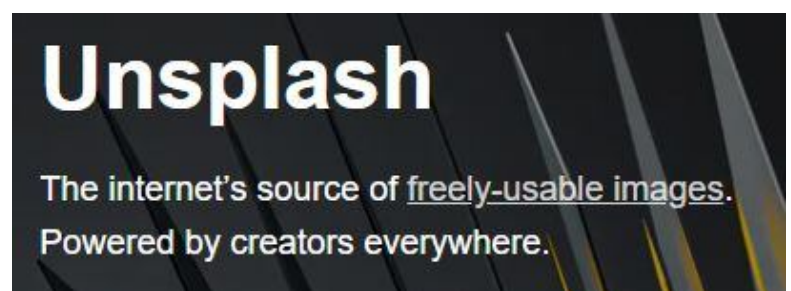
identify the camera used and its settings as well as the usual location, time, etc.

By now most people know about the USPS Mobile app. Among its many capabilities are finding the price of postage for a letter, large envelope or package; viewing an image of mail delivered to you by day, look up zip codes, request mail hold, find USPS locations and more.

We viewed a video clip from iPhone Life Guides on Apple Maps highlighting, oddly enough, the My Guides feature that allows you to organize sites you want to see or places to stay on a trip. Plan the trip, name the guide and enter the information into My Guides. During the trip all you have to do to get directions to the next site is to open the trip guide and touch on the site.

Our next virtual meeting of the Smartphone and Tablet SIG will be at 7:00 PM on Monday, August 23.

John Fair



# Secretary's Report for 7/15/21 CUE General Meeting

The regular monthly meeting of the Computer Users of Erie was held on Thursday, July 15, 2021, at 7 p.m. online via Zoom. President Conrad Sobczak presiding. Secretary Sue Mueller was present but unable to type because of a broken shoulder. Janice Castro took minutes in her place.

In attendance: Conrad Sobczak (Pres.), John Fair (Treasurer), Don Grimm, Sue Mueller (Secretary), Janice Castro, Suzanne Matthews, Anne Rosthauser, Carol Korn, Elizabeth Wisniewski, Carl Zalewski, Hal Kelley, Lawrence Brown, Lee Williams, Tom Kuklinski, Paul Francis, Dave Howell, Sam Fletcher, John Szympruch.

President Sobczak called the Business Meeting to order at 7:02 p.m. 18 Members were in attendance, more than meeting the required quorum of 20%, or 15.

The minutes of the previous three meetings, having been published in the CUE Newsletter, and prompting no proposed changes, were approved.

Treasurer John Fair reported a current PNC balance of \$3,295.04. He mentioned that three members recently have paid dues, two of them paying for the 2021-2022 dues year. He also took the opportunity to mention that August is the month when we typically pay dues, and invited members to mail them to CUE or bring to the picnic if we have one in September.

Reports of the Special Interest Groups:

- **Genealogy:** Meets first Tuesday of the month via Zoom. SIG Leader Sue Mueller reported that Paul Francis described a difficult question he has been researching. While no one was able to solve the problem during the ensuing discussion, several members said they learned new things in the process. Next meeting is August 3.

- **Handheld Devices:** This SIG meets the fourth Monday of the month. SIG Leader John Fair reported that the June meeting began with a review of basics for new users of iPhones or iPads. There was also discussion of the introduction of the 5G network in the Erie region, Private Tracking and Apple Music. The next meeting will be at 7 p.m. via Zoom on July 26.

President's Report:

- Conrad Sobczak wanted to acknowledge and thank two people who are not on the board or leading SIGS but are making important contributions to CUE: Tom Kuklinski, CUE Historian and Webmaster, and Don Grim, our Newsletter Editor.

- **Picnic:** The goal is to hold a CUE picnic in person in September. The Board will discuss this further at its next meeting. The main details to pin down are location and date.

We are tentatively planning to meet the third week of September at the Erie Runner's Club pavilion.

- **Holiday Dinner:** We have a reservation at the Elks Club for Thursday, December 2 at



## Secretary's Report Continued

6 p.m. We will update plans as the occasion approaches, discussing the menu, payment, and so on, with a final decision in October.

There being no further discussion, meeting was adjourned at 7:17 p.m., with 18 members still present.

Respectfully submitted,  
Janice Castro (for Secretary Sue Mueller)



# Golden Moments Continue For:

# CUE!

## A Note from the Editor

As usual, feel free to contribute information for the CUE newsletter. Whether it is small, large, an article, a tip, information, or pictures, you can send it to me and I will plan to include it in the newsletter. You can reach me at [grimcyber@yahoo.com](mailto:grimcyber@yahoo.com).

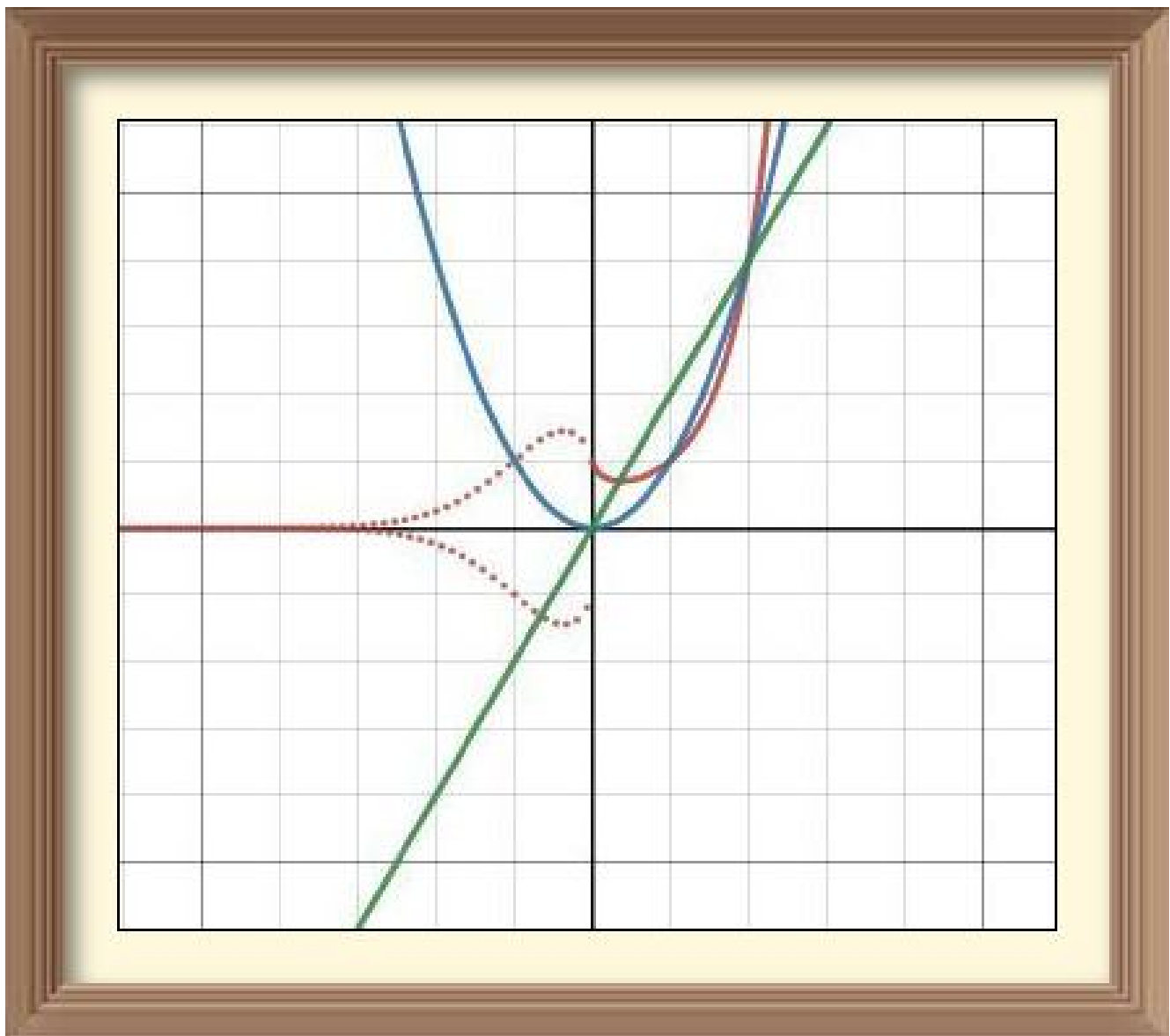
Remember that you can find recent news at the CUE website ([cuerie.com](http://cuerie.com)). At times,

the website will have more recent news than the CUE newsletter since the website is updated continuously and the newsletter is updated monthly.

Stay Safe!

Editorially Speaking, Don Grim

Masterpiece!



PLEASE PRINT

**COMPUTER USERS OF ERIE  
MEMBERSHIP APPLICATION**

Today's Date \_\_\_\_\_

<b>Last Name</b>	<b>First Name</b>
<b>Address</b>	
<b>City, State</b>	<b>Zip</b>
<b>Home Phone</b>	<b>Cell Phone</b>
<b>Your Email</b>	

The yearly dues are payable in August of each year. The dues are \$24 annual.

For NEW members only, when you join outside the annual cycle your initial dues are based upon the month you join. Follow the schedule below.

August \$24	September \$22	October \$20	November \$18
December \$16	January \$14	February \$12	March \$10
April \$8	May \$6	June \$4	July \$2

Information provided on this form will be placed into a CUE Membership Directory

What is your Computer or Device: (Circle)

Windows   Mac   Android   iPhone   iPad  
Tablet   Linux   Other

What is your level of expertise? (Circle)

Novice   I know some   I want to learn more  
Expert   Geek

Send your completed application  
to:

Computer Users of Erie

PO BOX 8941

Erie, Pa 16505-0941

What do you wish to gain by joining Computer Users of Erie?

Student membership is just \$15 per year (provide proof of student status)



# CUE Officer Information

## Officers

President	Conrad Sobczak	<a href="mailto:hat sob@verizon.net">hat sob@verizon.net</a>	814-899-9699
Vice President	Paul Francis	<a href="mailto:pdf flyer@roadrunner.com">pdf flyer@roadrunner.com</a>	814-882-1175
Secretary	Susan Mueller	<a href="mailto:suepasta@roadrunner.com">suepasta@roadrunner.com</a>	814-622-1262
Treasurer	John Fair	<a href="mailto:johncfair@gmail.com">johncfair@gmail.com</a>	814-474-3055

## At-Large Board

Janice Castro	<a href="mailto:jcastrocue@outlook.com">jcastrocue@outlook.com</a>	312-543-9128
Don Grim	<a href="mailto:grimcyber@yahoo.com">grimcyber@yahoo.com</a>	814-461-8289
Marcia Keller	<a href="mailto:dekmak43@gmail.com">dekmak43@gmail.com</a>	814-449-4682
Hal Kelley	<a href="mailto:hal_kelley@outlook.com">hal_kelley@outlook.com</a>	814-836-1803
Suzanne Matthews	<a href="mailto:pdxmatthews@aol.com">pdxmatthews@aol.com</a>	814-790-4185

## Alternate At-Large Board

Lou Cioccio	<a href="mailto:lcioccio@mac.com">lcioccio@mac.com</a>	814-868-1320
-------------	--	--------------

## Special Interest Groups

Beginner's (BUG)	Lou Cioccio	<a href="mailto:lcioccio@mac.com">lcioccio@mac.com</a>	814-868-1320
Digital Photo	Lou Cioccio	<a href="mailto:lcioccio@mac.com">lcioccio@mac.com</a>	814-868-1320
Genealogy	Susan Mueller	<a href="mailto:suepasta@roadrunner.com">suepasta@roadrunner.com</a>	814-622-1262
MAC	Lou Cioccio	<a href="mailto:lcioccio@mac.com">lcioccio@mac.com</a>	814-868-1320
Smartphone & Tablet	John Fair	<a href="mailto:johncfair@gmail.com">johncfair@gmail.com</a>	814-474-3055
Windows	Lou Cioccio	<a href="mailto:lcioccio@mac.com">lcioccio@mac.com</a>	814-868-1320

## Other Resources:

CUE Historian	Tom Kuklinski	<a href="mailto:tkuklinski@gmail.com">tkuklinski@gmail.com</a>	814-746-9165
DOS Information	Don Grim	<a href="mailto:grimcyber@yahoo.com">grimcyber@yahoo.com</a>	814-461-8289
Editor	Don Grim	<a href="mailto:grimcyber@yahoo.com">grimcyber@yahoo.com</a>	814-461-8289
Membership Chair	John Fair	<a href="mailto:johncfair@gmail.com">johncfair@gmail.com</a>	814-474-3055
Webmaster	Tom Kuklinski	<a href="mailto:tkuklinski@gmail.com">tkuklinski@gmail.com</a>	814-746-9165

## CUE Disclaimer

The Computer Users of Erie (CUE), a nonprofit affiliate of APCUG, is not connected with, nor does it represent the interests of such organizations as IBM, Apple, Texas Instruments, Microsoft, or any other manufacturer or vendor, nor can it assume responsibility for the accuracy or misrepresentation of materials or statements found in advertisements, articles, announcements, or presentations appearing in its newsletter or at CUE sponsored meetings. The members of the CUE Board of Directors, committees, and SIGs are volunteers giving of their time and energy to assist CUE members through education. CUE shall not be held liable in name or performance for the outcome of activities or agreements to provide services offered by any person in the name of CUE. CUE welcomes comments, letters, original articles and programs for its newsletter. Such materials may be submitted to: CUE Editor, P.O. Box 8941, Erie, PA, 16505-0941. Also you can email [grimcyber@yahoo.com](mailto:grimcyber@yahoo.com). Permission is hereby granted to other nonprofit computer user groups to reprint articles appearing herein, unless specifically restricted, provided credit is given to both its author, if known, and its original source.

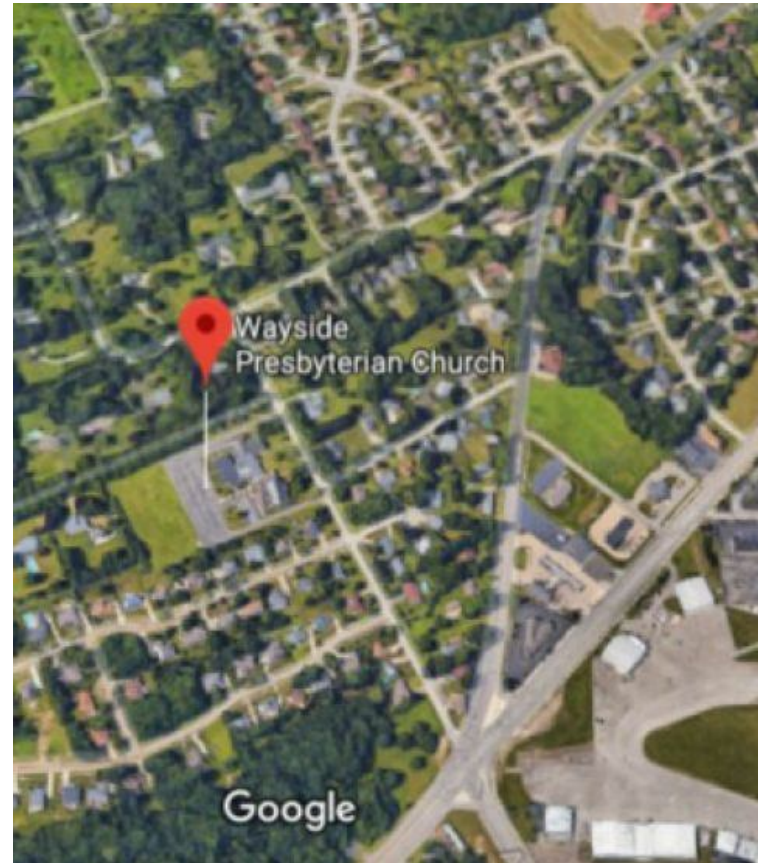
# Directions to Wayside Presbyterian Church for CUE Meetings

Wayside Presbyterian Church, at 1208 Asbury Road, is approximately three blocks north of the intersection of Asbury Road and Route 5. This intersection is at the northwest corner of the Erie International Airport property. Following Asbury, turn left at the first marked driveway for the church. During the afternoon winter schedule (10:00 AM for the months of November, January, February and March), entry is through the two sets of blue double doors. Use the buzzer to gain entry if the doors are locked. During the normal evening schedule (7:00 PM the remaining months) use the double doors on the south side of the Christian Education wing. Signs are posted in the building to direct you to the meeting room.

**From West of Erie International Airport:** Follow Route 5 to the intersection of Asbury and Route 5. Turn hard left onto Asbury Road. Look for the church on the left approximately 3 blocks north of the intersection.

**From South of Erie:** Take Interstate 79 north to the 26th Street (Route 20) Exit. Bear left onto 26th Street (Route 20) west. Follow Route 20 about 3.4 miles west to Asbury Road. Turn right (at the Sheetz Gas Station) onto Asbury and follow it straight across Route 5. Look for the church on the left approximately 3 blocks north of the intersection.

**From East of Erie International Airport:** Follow 26th Street (Route 20) west to Asbury Road. Turn right onto Asbury and follow it straight across Route 5. Look for the church on the left approximately 3 blocks north of the intersection. OR, follow 12th Street (Route 5) west past the airport to Asbury Road. Turn right onto Asbury Road. Look for the church on the left approximately 3 blocks north of the intersection.



## About the Newsletter

The CUE Newsletter is published monthly by the Computer Users of Erie (CUE), an independent nonprofit computer user group, dedicated to the education and support of our members. The opinions expressed herein are those of the individual authors or the editor, and do not necessarily reflect the opinions of CUE. This publication is Copyright © 2018 by the Computer Users of Erie. All rights reserved. Permission to reprint is hereby granted to any Nonprofit Organization, as long as proper credit is given, or not restricted by the original author or source. **Advertising:** Advertising is welcome from both our members and commercial sources. For current advertising rates, please send an email to the Editor requesting a copy of the Ad Rates file. **Address Changes:** Any recipient of the newsletter is urged to submit a change of address notification to the Editor, either via US Mail to the address shown below, or (preferably) via email, so we may keep our records accurate. **Newsletter Exchange:** CUE welcomes newsletters from other user groups. If you would like to exchange newsletters, either by US Mail or via electronic (Internet) delivery, please send your newsletter to the address listed below. We will add your name to our mailing list and send you our newsletter in return. **Submissions:** Submissions are always welcome from our members or outside sources. Submissions may be articles, images, cartoons, etc. For first time authors, please request a copy of our Submissions Guidelines from the Editor, prior to submitting any items. This will help to eliminate publication delays. Submissions are due by the 5th of each month. **Correspondence:** General correspondence to CUE may be sent via US Mail to: Computer Users of Erie, PO Box 8941, Erie, PA 16505-0941 USA. Email to: [cuerie@gmail.com](mailto:cuerie@gmail.com). Editor Email to: [grimcyber@yahoo.com](mailto:grimcyber@yahoo.com).

# CUE Membership Benefits



As the largest computer users group in northwest Pennsylvania, CUE has served Erie and surrounding communities since 1982. CUE provides a forum for people to learn about computers and have fun doing so. The group meets the third Thursday each month, with the exception of the months of July and December. In July the group gathers for a picnic and December is the annual holiday party (dates vary). CUE meetings are at Wayside Presbyterian Church, 1205 Asbury Road, Erie. Meetings from April through October are at 7:00 p.m. From November through March, the meetings are at 10:00 AM in the morning, except it will stay at 7:00 p.m. during the Caronavirus Pandemic.

Our monthly meetings are open to the public regardless of age or ability. Many of our members are senior citizens who span a wide range of capabilities and interests but share a desire to know more about how to use computer related technology. Our role is to provide a forum for continuous learning from each other. CUE has a closed Google gmail group that is used to communicate with members and to post questions/problems to seek answers from the membership. Members pay an annual membership fee of \$24 to receive a membership directory, monthly newsletter, availability to monthly general meetings, and any of the Special Interest Group (SIGs) meetings, usually held in a member's home. Locations and times vary, so check the online EVENTS Calendar on the website for the latest information. SIG topics include:

- Digital photography [and photo safari]
- Genealogy
- Macintosh computers
- Computer troubleshooting
- Beginners users group (BUG)
- Handheld smartphones and tablets

CUE is a member of the Association of Personal Computer User Groups (APCUG). APCUG is an International, platform-independent, volunteer-run, non-profit organization devoted to helping member User Groups offer enhanced services to their members. Some of the membership benefits include:

- Speakers bureau
- Free virtual technology conferences
- Regional conference
- Push newsletter articles
- Discounts and special offers from vendors
- User group newsletters online

Find us online at <http://www.cuerie.com/>. And Facebook @cuerie

Computer Users of Erie  
PO Box 8941  
Erie, PA 16505-0941

Postmaster:  
Address Service Requested



Address label here